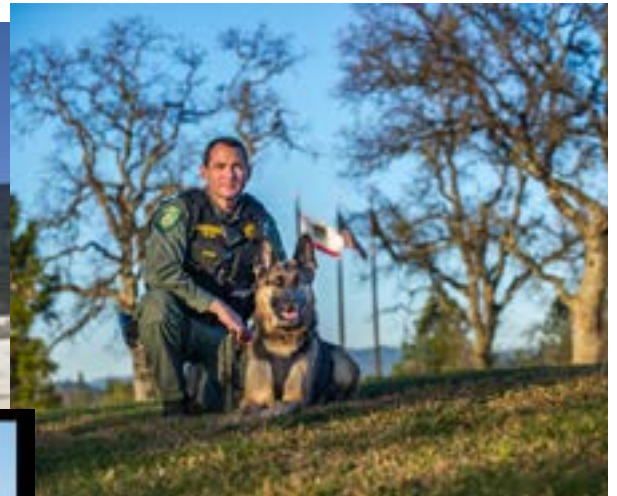


2015 Annual Report



El Dorado County Sheriff's Office





OUR MISSION

“The mission of the El Dorado County Sherriff’s Office is to uphold the law through the investigations and enforcement of criminal and civil law, to provide leadership and law enforcement support to allied law enforcement agencies, to deliver consistent and humane treatment to those placed in our care and custody, and to perform these responsibilities in a manner that is responsive to the needs of our community and faithful to the Constitution of the United States and the Constitution of the State of California.”

OUR VISION

“A modern approach to traditional law enforcement values;

Total enforcement on crime and criminals;

Total care for victims, witnesses, and the community;

Total professionalism, through training and by example”



MESSAGE FROM THE SHERIFF

I am proud to present to you, our citizens, our 2016 Annual Report. This report provides you with information concerning the wide range of services provided by the Sheriff's Office.

In 2015 the Sheriff's Office has continued to improve our operations in accordance with our Vision Statement of:

“A modern approach to traditional law enforcement values;

Total enforcement on crime and criminals;

Total care for victims, witnesses and the community;

Total professionalism, through training and by example”

In keeping with our Vision Statement, we have added two resident deputies, one each to the Pollock Pines and south county areas with a third to be stationed in the north county area. These Deputies are focusing on community outreach and neighborhood issues to improve the quality of life in the county.

Recently, we launched the Sheriff's Office Facebook page that is designed to keep our citizens apprised of what is happening in our county, improve communication with our citizens and foster collaboration to increase the safety of our citizens.

Internally, we have launched our first ever supervisors academy to develop the leadership skills of our supervisors. This will allow us to improve our service delivery to the county and use our resources more effectively.

We have continued to work with the Board of Supervisors to construct a new Public Safety Center. This long and arduous process is continuing and we are now looking to close escrow on the property in 2016 and continue with the design process of the new facility.

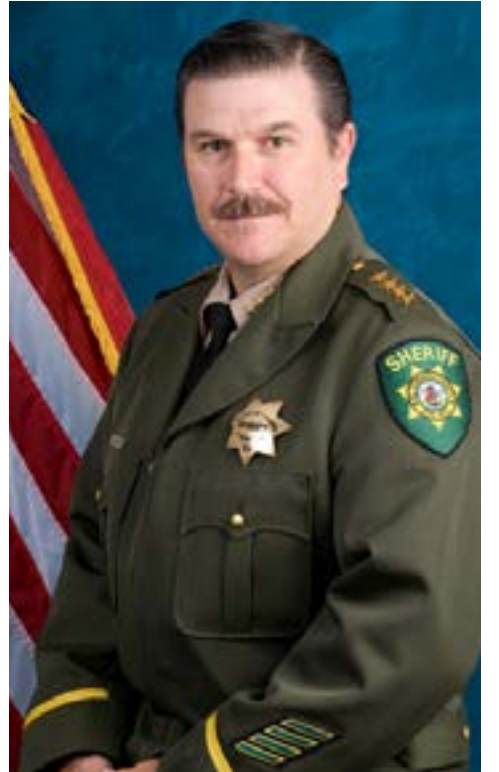
Our Jails continue to be impacted with the effects of AB109 and Proposition 47. These laws as well as the changes to our criminal justice system being implemented in 2016, as well as the impacts of marijuana legislation will continue to have major impacts to the Sheriff's Office and El Dorado County in the coming years.

The Sheriff's Office has continued to be financially conservative and we have worked hard to provide a value added approach to our services to the public. I continue to be honored to serve all of you and to lead the outstanding employees of the Sheriff's Office.

Thank you for your interest in our 2015 Annual Report.

Sincerely,

John D'Agostini
Sheriff-Coroner
Public Administrator

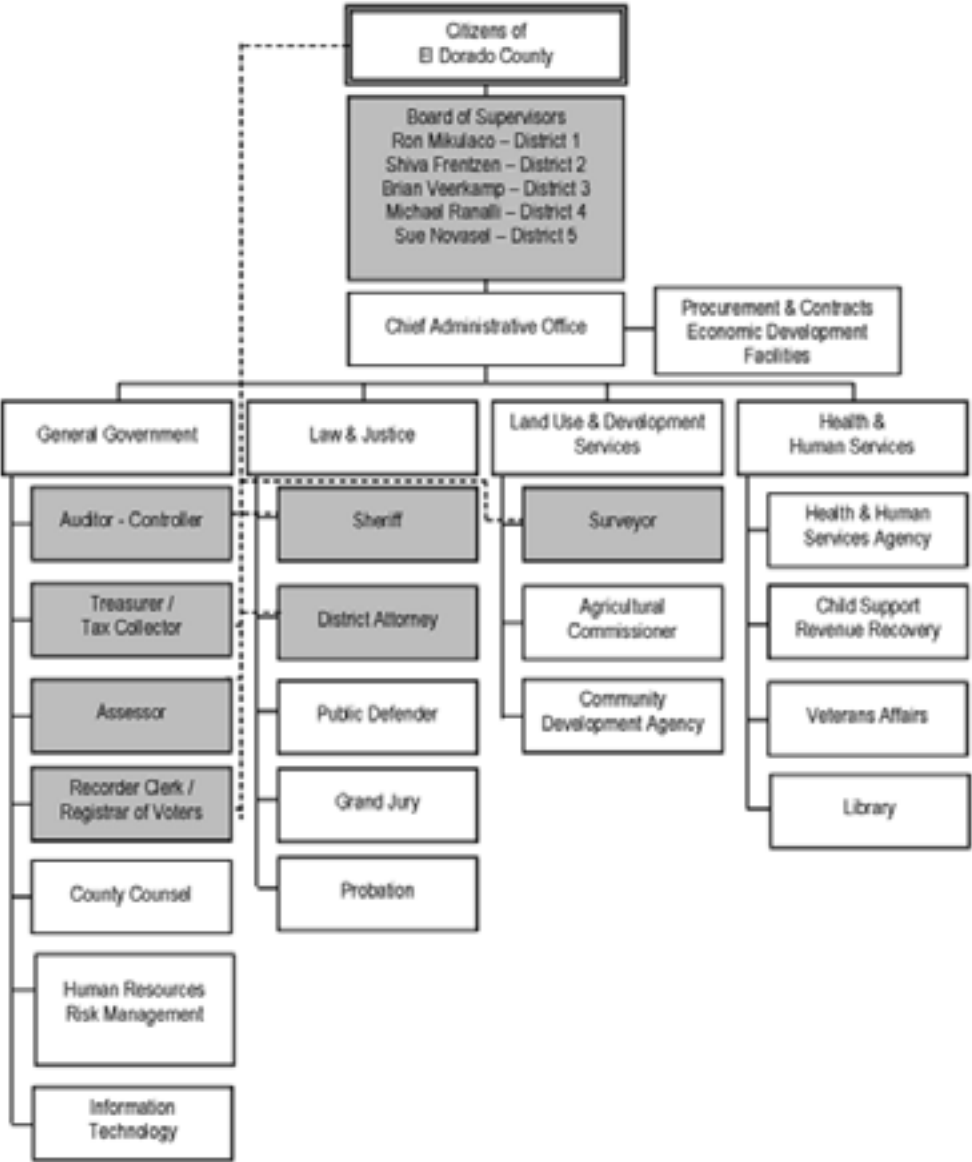


YEAR IN REVIEW

COUNTY DEMOGRAPHICS AND FACTS

TOTAL POPULATION	2014	2015	Change
	183,287	184,917	0.9%

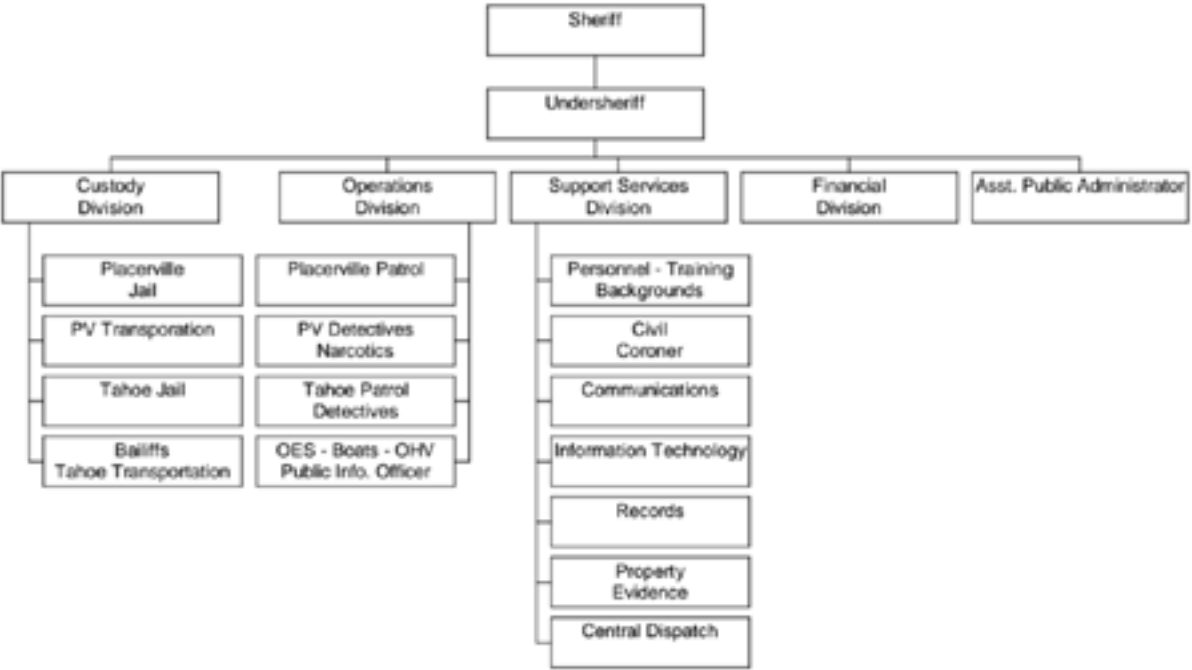
El Dorado County Land Area: 1,711 square miles
(source: Dept. of Fianace)



SHERIFF’S OFFICE AT A GLANCE

BUDGET FY 14/15	BUDGET	ACTUALS
Expenditures	\$61,295,940	\$57,181,505
Revenue	\$17,102,840	\$15,549,517
Net County Costs	\$44,193,100	\$41,631,988

TOTAL STAFF POSITIONS: 372 EMPLOYEES



Peace Officer Positions	
Sheriff	1
Undersheriff	1
Captain	3
Lieutenant	7
Sergeant	24
Deputy Sheriff’s	131
Correctional Officer Positions	
Correctional Lieutenant	2
Corrections Sergeant	11
Correctional Officer	85
Civilian Positions	
Non Sworn Manager	3
Professional Civilians	96
Security Officers	10

CRIME STATISTICS

El Dorado County Sheriff’s Office
Seven Major Crimes 2015

	2013	2014	% Change	2015	% Change
HOMICIDE*	2	2	0%	9	350%
RAPE **	26	33	27%	48	45%
ROBBERY	17	23	35%	32	39%
ASSAULTS	841	872	4%	776	-11%
LARCENY	1,276	1,299	2%	1,414	9%
BURGLARY	749	631	-16%	579	-8%
AUTO THEFTS ***	52	56	8%	43	-23%

* 6 total homicide incidents, two had multiple victims
** Definition of data collected for rape changed as of Jan 1, 2015 to include reports not previously reported
*** Change in reporting criteria for auto thefts as of Jan 1, 2015

El Dorado County Sheriff’s Office
Warrant Statistics 2015

	2013	2014	% Change	2015	% Change
ACTIVATED WARRANTS					
Misdemeanors	2,145	2,589	21%	2,309	-11%
Felonies	1,064	1,092	3%	809	-26%
Total Activated Warrants	3,209	3,681	15%	3,118	-15%
CLEARED WARRANTS					
Misdemeanors	2,239	2,468	-10%	2,286	-7%
Felonies	999	1,023	2%	815	-20%

El Dorado County Sheriff’s Office
Domestic Violence 2015

	2013	2014	% Change	2015	% Change
TOTAL DOMESTIC VIOLENCE CALLS	931	1,023	10%	901	-12%
TOTAL CASES WTIH WEAPONS	50	35	-30%	41	17%
FIRARMS*	1	1	100%	1	0%
KNIFE OR CUTTING INSTRUMENTS	3	3	0%	1	-67%
OTHER DANGEROUS WEAPONS	23	10	-57%	11	10%
PERSONAL WEAPONS (hands, fist, feet, etc.)	23	22	-4%	28	27%

* Negative or zero values can not be plotted

El Dorado County Sheriff’s Office
Criminal Records Statistics 2015

	2013	2014	% Change	2015	% Change
CASES	11,702	12,073	3%	11,048	-8%
CALLS FOR SERVICE	68,911	72,178	5%	73,302	2%
ARRESTS:					
Adult Arrests	3,761	4,179	11%	3,538	-15%
Juvenile Arrests	351	289	-18%	269	-7%
TOTAL ARRESTS	4,112	4,468	9%	3,807	-15%
BOOKINGS:					
Placerville Bookings	4,877	4,912	1%	4,152	-15%
So. Lake Tahoe Bookings	2,055	2,247	9%	1,975	-12%
TOTAL BOOKINGS	6,932	7,159	3%	6,127	-14%

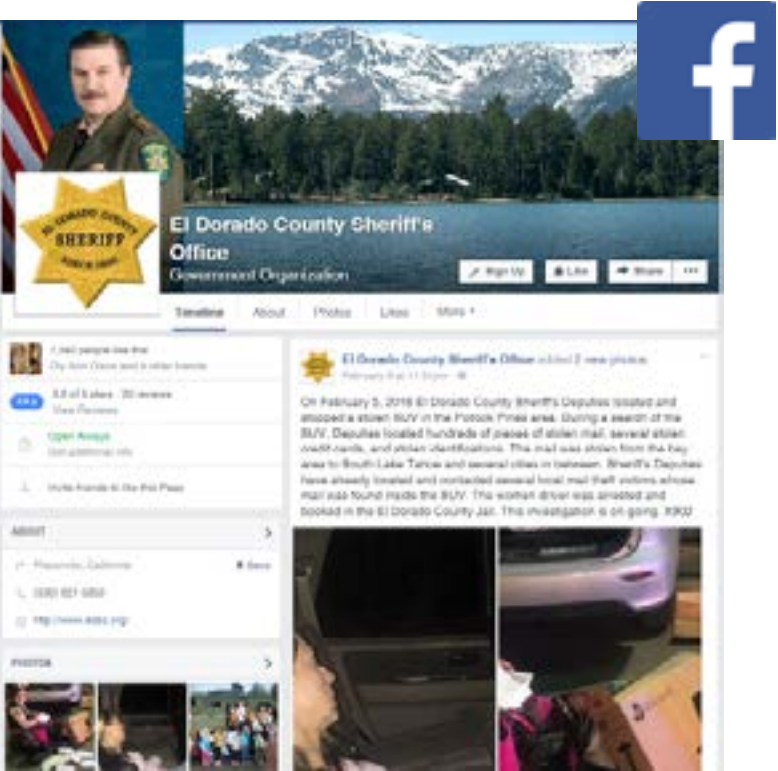
RESIDENT DEPUTY

The Sheriff’s Department Resident Deputy Program serves as the cornerstone of the agency’s community oriented policing effort. Resident Deputies are geographically assigned to communities throughout El Dorado County. The primary role of the Resident Deputy is to foster an effective relationship between citizens, businesses, schools, churches, and law enforcement. Resident Deputies regularly attend and organize community meetings, interact with citizens, and provide essential law enforcement services from a community oriented policing platform. Resident Deputies develop and implement problem solving projects to address various issues within their assigned areas. In October 2015, The El Dorado County Sheriff’s Department received approval from the Board of Supervisors for three additional Resident Deputy Positions. These three positions were in addition to the Tahoma (West Shore of Lake Tahoe) Post. The El Dorado County Sheriff’s Office now has four Resident Deputy Posts spread geographically throughout the County. These four posts consist of Tahoma (Zone 53), Georgetown Divide (Zone 4), Pollock Pines/ Hwy 50 Corridor (Zone 12/55), and South County (Zone 3). Deputies assigned to a Resident Post live within that zone for the duration of their assignment.

NEW IN 2015

SOCIAL MEDIA

In an effort to continually improve our ability to provide total care for our community, the Sheriff’s Office launched a Facebook page in 2015 (www.facebook.com/eldoradosheriff/). Having a presence on social media provides the Sheriff’s Office not only the ability to get out important and pertinent information to our community with the click of a button, but it affords an opportunity to showcase El Dorado County and how the Sheriff’s Office interacts with its residents. So far, our Facebook page has more than seven thousand followers and reaches more than one hundred thousand people each month. On a daily basis, Sheriff’s Office personnel communicate directly with our citizens; responding to their comments, answering their questions involving crime, events, and safety concerns, and building community relations. Keeping the public informed is a top priority for the El Dorado County Sheriff’s Office, and we will be continually evaluate new and emerging resources, looking for ways to make your Sheriff’s Office the best it can be for our community.



ADMINISTRATIVE SERVICES

EXECUTIVE SECRETARY LAW AND JUSTICE

The Executive Secretary to the Sheriff provides confidential administrative assistance to the Sheriff, the Undersheriff, and other supervisory and professional staff.

The Executive Secretary to the Sheriff has a working knowledge of department policies and procedures and provides assistance to other County Departments, outside agencies, community organizations, and the public with questions and concerns relating to the Sheriff's Office. Calls and visitors are screened, calendars and meetings are scheduled, all while maintaining a cohesive working relationship with all county departments, other agencies, the public, and Sheriff's Office staff.

FISCAL / PAYROLL & PUBLIC ADMINISTRATOR

The Fiscal Administration Section supports the operational divisions in the Sheriff's Office in areas including budgeting, accounting, payroll, procurement and contracting services. The Fiscal Administration Section also shares space and works collaboratively with staff from the Civil Section as well as the Assistant Public Administrator, who is responsible for administering the estates of people who die without a will or qualified person to administer the estate.



HONOR GUARD

The Sheriff's Honor Guard team consists of 10 deputies, 2 sergeants and 1 lieutenant. When in the Honor Guard capacity team members wear special uniforms which resemble the Marine Corps dress blue uniforms.

The team is multi-functional and is often called upon for many different details, such as funeral honors for fallen officers (active and retired), presentation of the colors at Veterans and Memorial Day events and flag raising ceremonies at local schools. In May of each year the Honor Guard team is present at the Peace Officer's Memorial dedication that is held in Sacramento, California.

2015 was a very active year for the Sheriff's Honor Guard team, they attended and assisted with 8 funeral details and presented the colors at 5 ceremonies.

PEER SUPPORT

The El Dorado County Sheriff's Office Peer Support Program was developed in 2009 resulting from recognition of the need for emotional support. The purpose of the program is to assist personnel with critical incident stress, stress created in their personal and/or professional lives. Peer support for people with similar life experiences has proven to be tremendously important towards helping many move forward through difficult situations. We value our employees' well-being. This includes on and off duty support and referrals for colleagues during a crisis or other stress related matters.

The team consists of employees who have a desire to assist peers with emotional support during stressful times. There is one lieutenant and one sergeant designated as Program Adviser and Program Coordinator. The Team is staffed with a Marriage and Family Therapist, a certified Trauma Specialist, and two Chaplains. The team is represented by custody, patrol, sheriff security, dispatch and investigations personnel. Currently there are 21 team members and we are always striving to increase our membership. We provide ongoing training to our team members in the areas of substance abuse recognition, crisis intervention training, and family survival. In keeping with our "In Confidence policy" statistical data is not tracked.

SUPPORT SERVICES DIVISION

PERSONNEL & BACKGROUNDS UNIT

The Personnel Unit conducts all Sheriff's Office pre-employment testing. Upon submitting an application for a current recruitment and meeting the requirements for the position applied for, the applicant undergoes a testing process that may include:

- ** A written examination
- ** A physical ability test
- ** An oral interview
- ** Sheriff's Interview

The Backgrounds Investigation Unit is responsible for completing pre-employment background investigations on all Sheriff's Office employees.

The Backgrounds Unit is comprised of sworn investigators who conduct the pre-employment background investigations with assistance of non-sworn support staff can be very involved.

Upon successfully passing a background investigation an applicant may be offered employment with the El Dorado County Sheriff's Office.

Backgrounds completed by Support Services:	120
Service Complaints Investigated:	16
Internal Affairs Investigations:	17
Accident Investigations:	38
Applications Processed:	911



COMMUNITY SERVICE OFFICERS

There are currently five Community Service Officers (CSOs) working throughout the Sheriff's Office. CSOs are assigned to Sheriff's Units to include, Reception, Patrol, Dispatch, and Coroner. They each assist in facilitating specific needs to the unit in which they are assigned. These duties may include administrative responsibilities, coordination with outside agencies, operating the main reception desk, conducting research, coordination of vehicles, supervising inmate workers, processing pawn slips, Safety Pup activities, statistical data entry, warrant entries, alarm permits, assisting the Coroner's Unit. Community Service Officers are a liaison between Sheriff's Units and outside agencies, and play an important role within the Sheriff's Office.

CSO's	2014	2015
Initial Reports Written	958	723
Supplemental Reports	82	147



Applicants participating in the physical agility testing

INFORMATION TECHNOLOGY

A key concept in our department vision statement is “a modern approach to traditional law enforcement values”. This year we have redesigned, specified and procured the next generation of onboard technology for the patrol units. The new equipment will be installed in all new patrol units as they are built. Some of the upgrades include:

WatchGuard HD In-Car Video System



The Sheriff’s Technology Unit is dedicated to applying the latest technology in the field and office. Getting the right information securely to the right person at the right time makes a difference for our deputies and citizens.

New Integrated Console and Computer to increase officer safety and ease of use. Designed specifically for the Ford Police Interceptors, this system moves the computer screen

BEFORE



AFTER



CORONER

Organization

The Coroner Section is an investigative unit responsible for carrying out the statutory duties of the Coroner. Those duties include investigation into the circumstances surrounding all deaths falling within the Coroner’s jurisdiction for the purpose of determining the cause, manner, and time of death. Medicolegal death investigations are conducted county-wide on all homicides, suicides, accidents, suspicious, unattended and un-explained deaths. Other duties include establishing the identity of the decedent, notification of the next of kin, safeguarding personal property and completion of mandatory records.

Coroner Jurisdiction

The Section is also proactive in the community, participating in programs aimed at reducing youth drunk driving and drug use, identifying consumer products causing fatal injury, prevention of domestic violence, drug abuse and elder abuse, and providing education and training for medical, legal, and law enforcement professionals. The Coroner also joins in a cooperative relationship with non-profit organ and tissue procurement agencies. The El Dorado County Sheriff/Coroner Office is mandated by the California Government Code § 27491 et seq. to determine the circumstances, manner, and cause of sudden or unexplained deaths in El Dorado County.

TOTAL CASES	437
Initial Report Taken By:	
Coroner's Division	181
Patrol Division	256
By Type:	
Homicides*	11
Doctor's Cases	213
Natural Causes	116
Accident	57
Suicide	27
Undetermined or Investigation Pending	12
SIDS	1

* The El Dorado County Coroner issues statistics on all reportable deaths, including homicides which occur on highways or within incorporated cities.

TRAINING

The El Dorado County Sheriff’s Office Training Section provided 5,431 hours of in-house training for employees and 16,368 hours of outside training during 2015. Some of the in-house training included Defensive Tactics, firearms, rifle, and Tasers. Some of the outside training received were various conferences and workshops hosted by other departments and/or organizations. Sheriff’s employees also received 562 hours of online training.



VEHICLE ABATEMENT

The vehicle abatement program is modeled after the State Statute authorizing Cities and Counties to adopt their own Ordinances to remove certain vehicles from public and private property. Patrol Deputies responds to citizen’s complaints about vehicles possibly in violation of the County Ordinance. The deputy evaluates the vehicle, and if found in violation of the County Ordinance places a tag on the vehicles, noting the violation. If the vehicle in violation has not been addressed to comply with the County Ordinance it is subject to be removed. Our contract tow companies remove and dispose of the vehicles in accordance with State law.

Statistics
Voluntary Abate Public=57
Voluntary Abate Private=10
Total Abatement Cases=67

CIVIL

The Civil Section of the Sheriff’s Office serves the public by processing and serving documents and civil court orders. Civilian staff processes and sworn staff serve court ordered evictions, wage garnishments, bank levies, real and personal property levies, restraining orders and other miscellaneous civil court paperwork.

2015 Funds Generated

<i>Placerville</i>	\$55,543.00
General Fund Revenue	\$25,213.00
Sheriff’s Fund	\$30,330.00
<i>South Lake Tahoe</i>	\$37,713.00
General Fund Revenue	\$23,994.00
Sheriff’s Fund	\$13,719.00

Civil Activity

	2014	2015
<i>Placerville</i>		
Eviction Services	481	315
Levy Services	2,452	455
Misc. Services*	810	293
<i>South Lake Tahoe</i>		
Eviction Services	157	235
Levy Services	28	27

*Misc services include, but are not limited to: warrants, domestic violence restraining orders, subpoenas, and other court documents.

RECORDS

The Records Section processes reports from the records management systems, maintains detention files and manages the central warrants database for the county (except South Lake Tahoe Police Department). They maintain the restraining order system for the whole county, making the data entries into the state database. Records personnel take fingerprints and issue various permits such as concealed weapons permits. They register drug and sex offenders, handle correspondence requests for reports or calls for service, and background checks for authorized agencies. They also maintain crime statistics for the department and send monthly reports to the state. There are ten Sheriff’s Technicians, one Community Service Officer, one Senior Sheriff’s Technician and one Records Supervisor that maintain the records section twenty-four hours, seven days a week. They perform a variety of complex technical and legal duties requiring them to examine documents for completeness, sufficiency, and conformity. They must be able to understand, interpret, apply, and explain relevant legal codes, laws, rules, regulations and procedures to do their work.



El Dorado County Sheriff’s Office
Warrant Statistics 2015

	2013	2014	% Change	2015	% Change
CCW PERMITS NEW ISSUED*	863	680	-21%	662	-3%
CCW PERMITS RENEWED*	656	673	3%	1136	69%
SEX, ARSON, DRUG REGISTRANTS**	117	108	-8%	91	-16%
COURT AND DV RESTRAINING ORDERS***	1,198	1,411	18%	1,244	-12%
LIVE SCAN (electronic fingerprinting)	2,561	2,482	-3%	2,799	13%
CORRESPONDENCE	3,132	3,053	-3%	2,862	-6%
BACKGROUND	1,787	2,153	20%	2,309	7%

* Carry Concealed Weapon
** New registrants: 2 arson, 51 narcotics, 36 sex registrants, 2 gang, total 394 sex registrants in county per Megan’s Law as of 12/31/2015
*** New restraining orders: 867 domestic violence, 377 other (harassment, work violence, criminal protective orders, etc.)
Negative or zero values can not be plotted



PROPERTY & EVIDENCE

The Property Section is responsible for the receipt, tagging, storage, retrieval and release or disposal of evidence and property. It is responsible for ensuring the maintenance of records on all evidence and property including “maintaining chain of custody.” Property personnel track the disposition of the case from receipt through the appeals process. Property personnel transport evidence between South Lake Tahoe and Placerville and the Department of Justice, dispose of hazardous waste, dispose of marijuana and other drugs and oversee the disposal of crime guns and ammunition. The Sheriff’s Property personnel work closely with the District Attorney’s Office and other agencies. PropertySection consists of four property technicians.

	Evidence	
	2014	2015
Evidence items taken in	11,485	11,541
Evidence items purged	8,511	7,951
Total evidence items stored		35,500



RADIO - COMMUNICATIONS

The Communications Unit worked hard this year updating our 20 year old dispatch systems. The new system interfaced or tied in to our older system relatively seamlessly which assisted our dispatchers because it took very little training to be proficient. The key difference between our 20 year old system and the new system is that it is networked based. The networked system will allow the Sheriff’s Office to add radio channels to our South Lake Tahoe substation, which was cost prohibitive in the past. Other projects include the improvement to our radio infrastructure by adding new repeaters. Additional agreements were put in place allowing the Sheriff’s Office to finish a repeater in El Dorado Hills. The addition of this repeater allows greater communication coverage in the lower half of the county as well as a gateway to Sacramento and Folsom. This will allow our deputies and dispatch to communicate with Sacramento and Folsom with our radios.



DISPATCH

Central Dispatch is an integral part of the Sheriff’s Office team. During the last year, EDSO dispatchers answered 72,302 calls for service and answered over 140,000 phone calls. Central Dispatch is open 24 hours a day, 365 days a year. Each dispatch console is equipped with seven 24 inch computer monitors that run the latest editions of law enforcement software. It is not uncommon for a dispatcher to utilize Google Maps for a location, check a Cal Trans camera for road conditions, or even post an update on our department Facebook page. They will use every tool at their disposal when assisting deputies in the field or citizens at home.

	2014	2015
Calls for Service	72,178	72,302
Most Common Calls for Service		
Medical & Fire Assists	7,425	7,690
Alarm Activations	4,059	4,406
Follow-ups	4,126	3,897
911 hang-ups	3,272	2,818
Relay (to other agencies)	4,440	5,256
Suspicious Subjects	3,511	3,154
Suspicious Vehicles	2,227	2,077



OPERATIONS DIVISION

PATROL

The patrol section falls under the Operations Division of the Sheriff’s Office. Due to the size and terrain of the County, the patrol section operates out of two offices, Placerville and South Lake Tahoe. The Placerville Office is responsible for patrolling the unincorporated areas of the County from Strawberry to the Sacramento County line and from Placer County to Amador County lines. The Lake Tahoe Substation is responsible to patrol the unincorporated area of the County from Strawberry east to the Nevada Stateline and from Placer County to Alpine County lines. The Placerville Office currently has 66 Patrol Deputies, 2 resident Deputies (Pollock Pines and Grizzly Flat), 10 Patrol Sergeants, 2 Lieutenants and 1 Operations Captain. The Lake Tahoe Substation has 12 Patrol Deputies, 1 resident Deputy (Meeks Bay), 4 Sergeants and 1 Lieutenant. Patrol Deputies work 12 hour shifts with split times to ensure maximum coverage for the citizens during peak business times.

Many Patrol Deputies also have collateral assignments within the Operations Division.

- * Collateral Units within the Operations Division include:
- * S.W.A.T. (Special Weapons and Tactics)
- * S.E.D. (Special Enforcement Detail)
- * C.N.T. (Crisis Negotiations Team)
- * S.A.R. (Search and Rescue)
- * Dive Team/Boat Patrol
- * E.O.D. (Explosives Ordinance Detail)
- * Canine Unit
- * C.I.T. (Crisis Intervention Team)
- * F.T.O. (Field Training Officers)
- * O.H.V. (Off Highway Vehicle)

PATROL STATISTICS		
	2014	2015
Reports & Supplements	14,142	17,390
Citations	3,040	2,611
Misdemeanor Arrests	1,548	1,436
Felony Arrests	1,339	782

OFFICER INVOLVED SHOOTING				
2011	2012	2013	2014	2015
0	1	1	1	2

USE OF FORCE				
2011	2012	2013	2014	2015
11	19	37	69	36



CASINO RELATED CRIMES

	2014	2015
CRIME TYPE		
Assault	8	8
Burglary	2	3
Theft	18	23
Controlled Substance	54	28
All Other	98	116

RESERVES

Currently there are 5 unpaid reserve deputies that volunteer their time to both the community and Sheriff’s Office by working in patrol or other assignments. At this time we are in the process of hiring more unpaid reserve deputies which will increase our patrol staffing as well as our presence at community events with a minimal cost to the taxpayer. These reserve deputies undergo an extensive field training program to ensure the citizens of the community get the same level of service they are accustomed to from this volunteer force. Our most tenured Reserve Deputy is our Senior Law Enforcement Chaplain who also participates in our peer support program. Some reserve deputies have become full time employees of the El Dorado County Sheriff’s Office. During calendar year 2015, the El Dorado County Sheriff’s Office Reserve Deputy Program volunteered over 1,000 hours to the community.

FIELD TRAINING OFFICER (FTO)

The Field Training Unit is responsible for providing training and performance evaluations of new Deputy Sheriff’s. Upon being hired, Deputy Sheriff’s begin a structured Field Training Program consisting of one week of orientation and one week of skills training. These Deputy Trainees are then assigned to work directly with a Field Training Officer (F.T.O.) for 4 training phases of five weeks each. After 20 weeks of training with an F.T.O., the trainee’s performance is then evaluated for an additional 2 weeks by an F.T.O. observer referred to as the shadow phase. The training program is performance based with the trainee being expected to handle more of the work in each phase. The goal of the Field Training program is to produce a Deputy Sheriff capable of performing as a solo beat deputy upon completion of the program. Field Training Officers are selected to these positions from Patrol. Upon being selected, F.T.O.’s are required to attend a 40 hour training course and must be recertified every three years. The Field Training Program currently has 12 trained Field Training Officers. During 2015, the F.T.O.’s trained 17 new hires.



RIDE ALONG PROGRAM

The purpose of the Sheriff’s Office ride-a-long program is to offer to the citizens the opportunity to better understand the challenges, risks and rewards faced by Patrol Deputies every day. This program encourages a more insightful relationship between the citizens and law enforcement. During the year patrol deputies give ride-a-longs to members of the Explorer Program, Chaplains, Citizen Academy Participants, Deputy Applicants, students of ROTC programs and to the general public. The program is overseen by a Patrol Lieutenant. Anyone wishing to request a ride-a-long is encouraged to do so by obtaining an application from the Sheriff’s Office in Placerville or South Lake Tahoe.

RIDE ALONGS 2015	
Explorers	9
Citizen’s Academy	61
Public	156



K9 UNIT

The K9 Unit is comprised of four Patrol K9 and one Narcotics task force K9. The K9 patrol teams are trained for patrol functions and narcotics detection. Their patrol functions includes detection, apprehension of suspects and narcotics and article searches. When K9 teams are used to apprehend wanted subjects often their mere presence deter the subject from resisting or fleeing. This allows suspects to be taken into custody with minimal or no injury to the suspect or officers. The Sheriff’s K9 unit conducts public demonstrations at various events and locations throughout the county, including schools, county fair and other community events. These demonstrations offer an opportunity to interact with the community in a positive manner and allows the community to better understand who we are.

K9 UNIT	
2015 Highlights	
75	No bite apprehensions
7	Bite apprehensions
7	Narcotics finds
16	Demo’s/trainings given to local schools and community groups



CRISIS INTERVENTION TEAM (CIT)

The Crisis Intervention Team is the implementation of the concept that law enforcement can do better in dealing with the mentally ill, and that repetitive incarceration in the County Jail is non-productive, expensive, and does not serve either a wellness or a justice benefit. The Crisis Intervention Team (CIT) consists of twenty-four deputy sheriffs and three patrol sergeants under the direction of a sheriff’s lieutenant. The team is committed to a process of preventative policing in dealing with consumers of mental health services. Each CIT Deputy Sheriff receives 32 hours of advanced training in recognizing symptomology of mental illness and in dealing with mental health consumers. Additionally, another twenty members of the Sheriff’s Office, including detectives, dispatchers, and office staff, have been trained in mental illness recognition, crisis intervention communications, and de-escalation techniques.

CIT deputies, in addition to their regular patrol duties, specialize in responding to calls with a mental health component as well as following up with mental health consumers. CIT is proud of our work in making connections with consumers and their families. Our process is to follow up with consumers who have had contact with law enforcement to form a partnership committed to their health and well-being. As a trust based relationship is built



calls for service related to mental illness has been driven down as are days spent in jail. In 2015 for the first time, we realized a reduction in the number of mental health commitments (5150 W&I Detentions) by 11% from the year prior. Of particular note is that several individuals also so the number of times that they personally were detained while in crisis reduced.

During 2015 EDSO-CIT began a grant funded training program. Thru this program every Deputy Sheriff, Correctional Officer and many support staff received eight hours of training in recognizing mental symptomatic conduct associated with mental illness. Additionally, EDSO offered this training free to over 200 public sector workers who have frequent public contact. Local fire departments, school districts as well as EID and other county agencies sent personal to these courses.

CRISIS RESPONSE UNIT

The El Dorado County Sheriff’s Office Special Weapons and Tactics Team (SWAT) and Crisis Negotiation Team (CNT) are committed to resolving difficult police situations using strategies and tactics that emphasize control, containment and resolution with the goal of protecting life and property. Both SWAT and CNT are committed to utilizing developed skills, tactics and specialized equipment and capabilities to resolve situations typically outside the realm of the ordinary patrol response. The members of the El Dorado County Sheriff’s Office SWAT Team are committed to maintaining the highest levels of professionalism, service and training.

The SWAT team was founded in 1979 and consists of 13 Entry Team Members, 4 Sniper Team Members, 1 SKIDDS Canine, 5 Tactical Medics and Tactical Dispatchers. The SWAT Team utilizes four vehicles: an equipment van, a deployment SUV, a Bearcat personnel rescue vehicle, and a pick up used for the Sniper Team. El Dorado County SWAT Team members train an average of 15 hours per month. Each member must pass strenuous firearms and physical fitness proficiency tests to remain on the team.

In 2015 the SWAT Team had 9 callouts. These callouts included an emergency response for an armed subject shooting at deputies, a barricaded suspect wanted for domestic assault, a high-risk search warrant service for a male subject wanted for a shooting in Sacramento County, an armed and barricaded suicidal suspect parked in his vehicle in a restaurant parking lot, high-risk search warrant service on a suspect wanted for a gang related shooting, and four separate operations involving high-risk warrants and vehicle stops for high-level narcotics traffickers in El Dorado County

The Crisis Negotiation Team (CNT) is comprised of skilled verbal-communicators who may be utilized to attempt to de-escalate and affect surrender in critical situations where suspects have taken hostages, barricaded themselves, or have suicidal tendencies. Crisis negotiation is a law enforcement technique used to communicate with people who are threatening violence. Skilled communicators use active listening, empathy and gain a rapport with the subject in crisis. Once trust has been gained, solutions to their problem may be recommended to gain compliance/surrender. The CNT Unit is comprised of 1 Sergeant and 6 negotiators.



EXPLOSIVE ORDINANCE DISPOSAL (EOD)

EOD’s role could best be described as “hazard mitigation.” EOD handles all manner of duties involving explosives from magazine inspections to found explosives - whether they be deteriorated blasting agents or improvised explosive devices. EOD trains to confront situations in various locations such as high angle and confined spaces. All personnel are trained to disable improvised explosive devices as well as deal with incendiary devices, weapons of mass destruction, and Haz-Mat situations.

The EOD unit also provides a service to other specialty units. The robot can be used to assist SWAT by remotely breaching, entering and clearing a building, forward observation, Break and Rake access, vehicle disabling, and downed officer retrieval. EOD can assist SWAT with explosive breaching to rapidly access a structure. The video feed from the robot can be recorded for documenting critical incidents. The robot can assist CNT by delivering throw phones, or negotiations can be carried on directly through the robot.

Our EOD unit is a part of the Sacramento Area EOD Unit; this is a regional collective made up of local, state, and federal agencies with regular input from military and private sector resources. This provides an immediate support network for additional resources and expertise. Much of EOD’s equipment and training is federally subsidized.

EOD Statistics:	
Recovery/Found Explosives	6
Suspicious or Unattended Packages	5
Search Warrants	1
SWAT Robot Assists	1
Demonstration/Presentation	2
Event Stand-by	4



EL DORADO GANG ENFORCEMENT (EDGE)

The El Dorado Gang Enforcement (E.D.G.E.) was established in 2004 and is a unit designed to investigate gang activity in El Dorado County. The gang unit is a multi-agency task force comprised one sergeant and seven deputies, four probation officers, one supervising probation officer, two correctional officers and one District Attorney Investigator. The gang unit has three primary functions: intelligence, enforcement and education. The unit identifies and validates members and associates, investigate crimes committed by gang members and provide education presentations to the community to assist in identifying and curtailing gang activity.

Statistics:	
Investigations completed:	35
Arrests:	8
New Gang Validations:	9

FLEET

El Dorado County Sheriff’s Office has a wide variety of vehicles, each of which provides a valuable service to the department. The usage of those vehicles range from standard patrol, transportation units, unmarked units to specialized vehicles such as the Bearcat, which is an armored SWAT vehicle. In 2015 the Sheriff’s Office transitioned to the Ford Explorer Police Interceptor vehicles. This all-wheel drive SUV platform will be the primary vehicle for he Sheriff’s Office for years to come.



SCHOOL RESOURCE OFFICER (SRO) PROGRAM

There are sixteen different school districts that oversee fifty-nine individual schools in El Dorado County. The El Dorado County Sheriff’s Office serves the majority of these schools with the School Resource Officer (SRO) program. The SRO program has two full time deputies who are supervised by the Administrative Sergeant. The SRO Deputies respond to all calls for service at all the High Schools located in the County along with most middle and elementary schools. Their duties include providing general law enforcement services, criminal investigation follow-ups, public presentations, security for athletic and special events at the schools. They also work with the El Dorado County Office of Education to present educational opportunities to faculty and parents regarding the growing trends of student behavior and to help deter students from engaging in criminal activity. SRO’s regularly attend meetings such as Student Attendance Review Board and school district meetings for expulsion hearings or a controversial topic is being discussed. They also participate in the annual “Every Fifteen Minutes” event where high school students are educated on how to combat drunk driving.

SRO Program Statistics		
	2014	2015
Reports Written	227	324
Citations Issued	224	145
Arrests (Non-cites)	49	26

SPECIAL ENFORCEMENT DETAIL (S.E.D.)

The Special Enforcement Detail (S.E.D.) Unit is comprised of four eputy Sheriff’s and a Sergeant. The primary function of the S.E.D. Unit is to assist patrol with community issues that cannot typically be handled on a day to day basis. The S.E.D. unit works a variety of days and hours based upon the needs of the Agency or assignment. S.E.D. commonly assists other sections within the Agency as well such as Investigations, Narcotics, S.W.A.T. and the Gang Unit.

S.E.D. regularly conducts probation and parole searches, authors and serves Search Warrants, conducts surveillance and locates wanted violent offenders. In 2015, S.E.D. worked several community details. They included two drug “Take-Back” days, a three day Snow Globe Concert in South Lake Tahoe and stings on alcohol and tobacco sales to youth from businesses. With the large wild land fires in neighboring counties, the S.E.D. unit was sent to assist the requesting Agencies in performing evacuations and providing security to the vacated residences. The S.E.D. Unit is a very proactive unit who is able to assist whenever requested.

SED		
	2014	2015
Patrol Assists	246	323
Detective Assists	66	225
Citations Issued	122	127
Total Arrests	266	284
Felony	117	140
Misdemeanor	149	191
Traffic Stops	244	229
Field Interviews	116	856
Warrants written	173	24
Parole Searches	61	67
Probation Searches	198	169
Miscellaneous Details	201	219

PUBLIC INFORMATION OFFICER (PIO)

Currently the Public Information Officers (PIO) Unit consists of two collaterally assigned lieutenants and six collaterally assigned sergeants. The PIO’s are spread throughout the department working in their full-time assignments in Support Services, Coroner’s, OES, Patrol, and Court Security. These public information officers serve as a liaison between the Sheriff’s Office and the media. They write news releases, plan news conferences, and respond to inquiries from the media to include audio and video interviews. They often meet and escort reporters and photographers who come to the Sheriff’s Office or other locations of news worthy events for interviews or photographs. Public information officers may be spokespersons, or they may serve as advisers to those who will appear on camera. In addition to facilitating media stories, public information officers keep the public informed through direct communication. They assist in maintaining the Sheriff’s website and develop informational releases. Public information officers may also work with agency staff to gather information requested by a reporter or citizen. They often represent the Sheriff’s Office at public meetings, conferences and community events. In 2015, PIO’s prepared 158 press releases.



OFFICE OF EMERGENCY SERVICES (OES)

The mission of the El Dorado County Office of Emergency Services is to train the people in El Dorado County to prepare for, respond to, and recover from emergencies that threaten life, property, or the environment. In 1994, the El Dorado County Board of Supervisors designated the Sheriff’s Office responsible for managing the County’s Office of Emergency Services (OES). Sheriff’s employees assigned to OES participate in various workshops, drills, table top exercises and full scale exercises to prepare and respond to disasters in El Dorado County. In addition to participating Law and Fire agencies, the Office of Emergency Services assists local utilities, schools, transportation, and medical providers as well as other volunteer organizations with disaster planning and response. The office of Emergency Services is responsible for maintaining the readiness of the County Emergency Operations Center (EOC) in the event of local disasters. The EOC is a physical location where stakeholders in a disaster gather and share information as well as support first responders during disaster response and recovery. The personnel assigned to OES also maintain the reverse “911” emergency notification system including the County’s self-registration portal. In 2015 the Sheriff’s Office tested and implemented a new mass notification system called Code Red. Over 100,000 telephone calls were made to all areas of the County during the testing phase of the system. OES personnel then fielded over 800 telephone calls by County residents to assist them in registering their information in the system.

During the fiscal grant cycle year, OES participated in the following :

Emergency Management Performance Grant (EMPG) exercises:

- 152- Meetings
- 60 -Workshops and drills
- 18- Workplace violence assessments
- 42- Conference calls
- 7- Workplace violence and prevention trainings



Community Emergency Response Team (CERT)

The El Dorado County Sheriff’s Office oversees three CERT teams, which are located in Georgetown (17 volunteers), Pollock Pines (21 volunteers) and Recue (21 volunteers) for a total of 59 volunteers throughout the County. The CERT volunteers complete a background investigation, an academy, and maintain their status through monthly meetings and trainings which are conducted by OES personnel.

Search and Rescue (SAR)

The west-slope team has approximately 172 active SAR volunteers. They are coordinated by two full-time OES/SAR sheriff's deputies and six collateral sheriff's deputies. The Tahoe SAR team consists of 40 volunteers who are coordinated by 1 full-time deputy and two part-time collateral coordinators. During 2015 El Dorado County SAR volunteers participated in a search for a lost motorcycle rider named Ed Cavanaugh. The search lasted approximately two weeks in difficult and technical terrain. 361 total volunteers participated in the search for Ed over that time frame.

A total of 3,319 hours were dedicated to the search by volunteers.

Typical calls for SAR include:

- Lost/injured skiers
- Wilderness/remote plane crashes
- Stranded/injured recreational climbers and high angle rope incidents
- River rescues
- Lost children both in neighborhoods and wilderness settings
- Dementia and Alzheimer's walk-aways

All SAR volunteers must be certified in first-aid and CPR. They must complete a background check, pass an interview, complete a field training program, and complete a series of bi-annual SAR classes. These classes include: critical stress management, air craft safety, map and compass, land navigation with GPS, crime scene preservation, radio procedures, search theory, and wilderness survival. Additionally, volunteers attend monthly meetings and trainings as well as twice annual full-scale training exercises. The average volunteer commits approximately 10-20 hours of service to the County each month. This does not include search call-outs which can last for days. This comes out to approximately 35,000 hours of volunteer time donated in the name of serving citizens in El Dorado County. Our mission of saving lives is accomplished through the support of volunteers and Sheriff's deputies. Although the Sheriff's Office personnel coordinate the unit, without the use of these highly trained volunteers, an effective SAR team would not be possible.



DIVE TEAM

The Dive Team consists of nine sheriff's deputies and one sergeant. The Dive team performs underwater searches for the recovery of evidence, swift-water rescue, high-angle/cliff operations, and is responsible for the recovery of drowning victims. Divers are called upon to perform these tasks in the many diverse water environments that exist in El Dorado County. From the deep, cold waters of Lake Tahoe and the abundant high-country lakes of the Sierras, to the surging waters of the Consumnes River and South Fork of the American River. In addition to the varied environments of El Dorado County, the Dive Team routinely responds throughout the State of California to assist other agencies and departments. The Dive Team utilizes both SCUBA gear and Surface-supplied breathing equipment. The team also has a remotely-operated submersible vehicle, underwater lifting equipment, inflatable boats, and a multitude of rope and mountaineering gear.



In 2015, the Dive team had six call-outs.

These included the recovery of a suicide victim and his vehicle from Folsom Lake, recovery of a sunken boat in Slab Creek Reservoir, a search for a drowning victim in Amador County, a search for a vehicle from a cold-case homicide in Sacramento County, and the recovery of a vehicle from Caple's Lake in Alpine County.



MARINE PATROL

The Boating Unit is responsible for marine enforcement and rescue operations on all of El Dorado County’s numerous waterways. This is accomplished by enforcement of County, State and Federal Boating Laws, vessel inspections and public education. There are dozens of

lakes and waterways within the county, with eight being large enough to be used for recreational boaters and whitewater enthusiasts. The Boating Unit staffed patrols on Folsom Lake, Jenkinson Lake, Union Valley Reservoir, Loon Lake, Echo Lake, Fallen Leaf Lake, Lake Tahoe, and the South Fork American River.

Folsom Lake and South Lake Tahoe are two of the largest lakes located in the County. On both lakes our marine boating unit shares jurisdiction with other county marine units to include State Parks and U.S. Coast Guard. The Boating Unit is funded entirely from a California State Parks Department of Boating and Waterways grant and boat registration fees. Our Boat Patrol Deputies all have extensive law enforcement experience. The Unit is comprised of one full-time Sergeant, two seasonal full-time deputies and eight extra-help seasonal deputies.

There are five aluminum boats, a rigid hull inflatable Boat, two personal watercrafts, two whitewater rafts and two inflatable kayaks utilized by the Boating Unit. El Dorado County is unique in that we conduct a Whitewater Raft Patrol on a 20-mile stretch of the South Fork American River. This is one of only a few Whitewater Patrols operated by a Sheriff’s Office in the nation. This patrol navigates over Class III/IV rapids and has contact with over 150,000 rafters during the rafting season which runs from May to September.

BOATING STATISTICS (MAY-SEPT)	
Enforcement Contacts	912
Careless/Negligent/Reckless Warnings	250
Citations/Arrests	60
Accident Investigations	6
Personal Flotation Device Warnings	372
Vessels Assisted	164
Searches	53
Boating Under the Influence (BUI)	1
Registration & Other Warnings	296
Vessels Inspected	106
Drowning/Recovery Attempts	2
Organized Water Events	5
On the Water Hours	2,594
Total Boat Patrol Hours	4,505



OFF-HIGHWAY VEHICLE (OHV) RUBICON PATROL

The El Dorado County Sheriff’s Office OHV unit consists of a seasonal sergeant and two seasonal deputies. In 2015, the Rubicon Trail saw a dramatic increase in users with 7,146 vehicles and 15,846 persons who used the trail between Memorial Day weekend through Labor Day weekend. Organized runs of groups from 50 to 500 can be seen every weekend on the Rubicon Trail. In 2015, the OHV unit expanded its patrol’s to include the South Lake Tahoe Basin and Barrett Lake Trail.



2015 STATISTICS
Verbile Warnings (Safety Concerns)= 46 ** Citations=1
Arrests=1
Search & Rescues=7 ** Vehicle Accidents=7 ** Medical Assits = 5



INVESTIGATIONS

The Investigations Section consists of thirteen full-time detective positions, one sergeant, one lieutenant, and one crime intelligence analyst. These detectives are highly trained to handle and investigate the various crimes and/or critical incident investigations which occur within the county.

The Investigations Section has the following investigator assignments: Property Crime, Elder Abuse and Financial Crime, High-technology Crime, Sex and 290 Registrant Crime, Homicide/Persons Crime, and Cold Case Homicides. During large scale investigations or critical incidents the detectives work collectively to investigate these cases.

The Investigations Unit can be broken down into two categories of investigations: Crimes against Property and Crimes against Persons. Below are just a few of the successful investigations conducted in 2015.

Crimes against Property

In late November and early December, El Dorado County Sheriff’s Deputies documented two incidents of commercial burglaries in the Coloma and Cool areas. In both cases an unknown suspect forcibly entered the businesses and stole cash from free standing ATM machines. Surveillance at one location captured the suspect’s face and a BOL (Be on the Lookout) was dispersed statewide in an attempt to identify him. In what would become a major investigation involving numerous law enforcement agencies around the state, the suspect was identified as a subject from the San Francisco Bay Area with an extensive criminal history. He was subsequently tracked and arrested after stepping off a plane in Honolulu, HI. The suspect was tied to nine separate burglaries in El Dorado, Nevada, Placer, and San Luis Obispo counties and is currently awaiting trial.

In June, the Financial Crimes Detective investigated a credit card fraud ring that was operating in Red Hawk Casino. Over 2000 stolen credit card numbers were located and four people were arrested. The female who was running this ring stayed behind in a hotel room, sending others into the casino to use fraudulent credit cards and return with the money. The female was already under investigation by the US Secret Service and our detective worked with their agency to bring the suspects to justice.

Crimes Against Person(s)

In March, sex crime detectives investigated a 24 year old male from Vacaville, who used social media to meet teenage girls. The suspect had previously met with a 14 year old after lying about his age and engaged in sexual intercourse with her. Using the victim's cell phone, detectives conversed with the suspect through text message. The suspect arranged to meet with “the victim” again and arrived at a predisposed location. Upon the suspect’s arrival, detectives were waiting and he was taken into custody. Further investigation revealed the suspect had met and attempted to meet with numerous other 13 and 14 year old females in Northern California. The suspect later pled guilty receiving a jail sentence of along with the requirement of being a registered sex offender for life once released.

In July, sex crimes detectives investigated the report of an adult male who was observed covertly taking photographs up the skirt of a female minor while she was shopping at a store in El Dorado Hills. Upon identifying the suspect (a prominent real estate broker), a thorough investigation revealed that the suspect was in possession of hundreds of inappropriate photographs and videos women. Some of these even included videos that had been secretly recorded through the bedroom and bathroom windows of female neighbors. It was determined that the suspect had been committing these crimes for a considerable length of time. The suspect was arrested and is currently awaiting trial for his numerous offenses.

In January, Homicide Detectives responded to a homicide investigation in which a woman and her friend were confronted by an armed man in the parking lot of a restaurant as the two women were attempting to leave. As the armed man ordered one of the women to hand over her car keys, a struggle ensued and the woman was shot and killed. The suspect fled the scene in the victim's vehicle, which he ultimately crashed. He was apprehended at the crash site and later interviewed by detectives. Under interrogation the suspect admitted his involvement in the crime and was booked into the county jail for murder as well as other offenses committed prior to the homicide. A thorough investigation and development of a strong case by detectives ultimately led to the suspect pleading guilty to murder. He was subsequently sentenced to life in prison without the possibility of parole.

Conclusion:
In 2015, we saw our highest homicide count in the last decade with 11. In each of these cases, the Investigations Section successfully arrested the suspect(s) responsible for the deaths and they have either plead to the charges or are awaiting trial. The Investigations Section received 3,068 cases to be investigated, served 114 Search Warrants and made 57 Arrests.

With the assistance of El Dorado County District Attorney Investigators, cold case homicide detectives were able to resolve a long–time suspected homicide which had become a cold case. Originally a missing person report in 2006, informants had later provided information that the victim was murdered, then placed inside a drum which was welded shut and buried on a rural property. A search warrant was served at the property in 2008, but the body and/or the drum was not located. In 2014 a joint investigation by members of the sheriff’s office cold case unit and members of the district attorney’s office began. In the subsequent investigation additional evidence and information was obtained as to the location of the victim. Based on new information, in March of 2015 another search warrant was obtained and executed at the property where a barrel containing the remains of the victim was finally recovered. Additionally, the suspect believed to be responsible for the murder was later arrested and is currently in custody awaiting trial for the crime.

In September, detectives were involved in a particularly unusual case. Deputies responded to a possible wild land fire. Upon arrival of deputies and fire personnel it was determined that the wild land fire started because of a structure fire. 3 sets of human remains were later located in the burned



structure. Detectives along with CSI personnel recovered the remains. During the recovery of the remains it was determined that each set of remains had suffered gunshot wounds. The investigation led Detectives and District Attorney Investigators, out of county to the city of Benicia where the deceased subjects resided. Over the next several weeks Detectives and D.A.

Investigators developed further

information regarding the family and a surviving 16 year old son. The information developed indicated that the 16 year old son was responsible for the murder of his father, father's fiancé, and his 8 year old brother. The 16 year old was arrested and is currently awaiting trial.

CRIME SCENE INVESTIGATIONS (CSI)

The Crime Scene Investigation or CSI unit falls under the supervision of investigations. This unit generally works directly with detectives by assisting them in the processing of major crime scenes such as homicides, suspicious deaths, officer involved shootings, and armed robberies.

CSI assists in searching the scene for evidence and then preserving the scene and evidence through thorough documentation and evidence



collection. The scene is documented using various methods to include detailed reports, video, extensive detailed photography, DNA collection, and computer diagraming equipment and software. The evidence is collected, packaged, and booked into the EDSO property section and frequently forwarded on to the Department of Justice crime lab for further analysis. This detailed documentation assists investigators in identifying or confirming suspects. It also aids prosecutors in being able to see the whole picture of what occurred. CSI members are often used to testify in trials in order

to paint the picture of the crime scene for the jurors. The CSI unit also often examines evidence collected in patrol level investigations such as burglaries, assaults, and stolen vehicles. This evidence is processed for fingerprints and DNA evidence.

The CSI unit is comprised of 12 sworn Deputy Sheriffs who perform this function in as a collateral assignment with being on-call 24 hours a day 7 days a week. All members are trained by standards set forth by DOJ through a basic and advanced CSI training. Specialized training for members includes fingerprinting, blood pattern interpretation, forensic photography, and post bombing incident investigation.



In 2015, CSI responded to more than 50 call outs.

CRIME & INTELLIGENCE ANALYSIS UNIT

The Sheriff’s Office has one Crime & Intelligent Analyst. Although the analyst is assigned to the Investigative division, support is provided to all areas of the Sheriff’s Office as well as the public. Crime analysis is a systematic and analytical process of “who is doing what to whom.” Intelligence analysis is the process of analyzing “Who is doing what with whom,” and is used to assist units such as Narcotics and Gangs.

Both processes include reviewing large volumes of information collected by deputies and investigators from witnesses, victims, confidential informants and suspects.

The Analyst provides weekly reports to both Detectives and Patrol Officers. These reports help them see the “overall” crime picture.

The Analyst also works closely with a network of other department analysts. This allows a full view of the surrounding counties and collaboration when a suspect crosses county lines to commit crimes.

NARCOTICS

WENET

The West El Dorado Narcotics Enforcement Team (WENET) is made up of 6 Detectives and a Sergeant. One detective assigned to a local regional task force and one to a drug enforcement agency federal task force. In 2015, WENET Detectives served 56 search warrants and completed 192 reports. Detectives made 75 felony arrests and 7 misdemeanor arrests. Detectives conducted dozens of covert operations and/or undercover buys. 22 dangerous Honey Oil labs were dismantled and 62 weapons were seized. Detectives eradicated 13,149 marijuana plants and seized 3,469 pounds of processed marijuana. WENET was also involved in the seizure of significant quantities of cocaine, methamphetamine, heroin, prescription pills, and other designer drugs. WENET seized \$1,545,389.58 in US currency and other properties.



The primary duty of Detectives within WENET is to follow up on information received that requires covert undercover operations, and investigation. WENET Detectives’ second priority is to locate and cultivate confidential sources that can supply information that will be utilized to initiate investigations that require covert undercover operations.



WENET Detectives’ third priority is to conduct those overt investigations, which can also be conducted by other units within the Sheriff’s Office, such as knock and talks, probation searches and parole searches. Narcotics Detectives must be proactive and have the initiative and motivation to seek out and develop their own sources of information and investigations. If undercover operations and confidential sources of information cannot be established, they must execute overt investigations, not only for the purpose of arresting violators of controlled substance laws but also as a method of developing confidential informants for the purpose of initiating covert investigations.



WENET Detectives are expected to be capable of conducting any type of investigation and are expected to initiate cases in all areas of covert investigations and are not limited to controlled substance investigations. During 2015 the West El Dorado Narcotics Enforcement Team (W.E.N.E.T.) Detectives not only investigated the illicit manufacture, cultivation and distribution of controlled substances they also assisted in locating, tracking and the apprehending felony fugitives, burglary suspects, homicide suspects, and stolen property.

In 2015, WENET observed a huge growth of Heroin use in El Dorado County. Heroin is believed to be the cause of numerous overdoses and other drug related deaths in the County. WENET has been working diligently with the Drug Enforcement Administration to find the sources and suppliers of this dangerous drug and hold them accountable for the distribution of Heroin.

SLEDNET

The South Lake El Dorado Narcotics Enforcement Team (SLEDNET) is supervised by one EDSO Sergeant acting as the Task Force Commander. SLEDNET is comprised of one EDSO Detective, two South Lake Tahoe Police Department Detectives, one El Dorado County District Attorney Investigator, and one El Dorado County Probation Department Officer for 2015.

SLEDNET’s primary purpose is to enforce the laws pertaining to the trafficking of illegal narcotics within the South Lake Tahoe portion of El Dorado County. SLEDNET also assists with all serious felony crimes requiring specialized investigative techniques such as covert surveillance, informant development, and undercover operations. SLEDNET also works closely with outside law enforcement agencies. SLEDNET has the benefit of having a narcotic detecting K9 assigned to the unit. SLEDNET’s K9 named Odin assisted Detectives with numerous investigations and searches during the past year. Odin proved to be a substantial asset to SLEDNET, and our allied agencies because of his ability to expedite large scale searches and accurately detect narcotics during vehicle stops.



2015 was a very active year for SLEDNET Detectives who completed over 60 investigations and served 46 search warrants. SLEDNET Detectives made 53 felony arrests, and seized 21 firearms. Detectives eradicated over 1000 marijuana plants, and seized 50 pounds of processed marijuana with a street value of approximately \$300,000. SLEDNET Detectives seized over 700 ecstasy pills and 8 ounces of heroin. Detectives seized over \$40,000 in US currency during various investigations in an ongoing effort to utilize asset forfeiture as an additional means to disrupt narcotic trafficking.

SLEDNET continued enforcement of indoor marijuana cultivation during 2015. In response to ongoing community complaints about indoor marijuana growing within residential neighborhoods, SLEDNET aggressively investigated and arrested many individuals operating outside the scope of California Proposition 215. SLEDNET partnered with Building Inspectors and Fire Marshalls during these investigations to disconnect illegal and poor electrical wiring to also ensure the safety of the community through fire prevention.



SLEDNET also diligently investigated all heroin cases, to include overdoses within the Lake Tahoe basin. Due to a national epidemic with the rise of heroin use, with the majority of the addicts being young adults, SLEDNET Detectives made it one of their missions to actively pursue this particular narcotic.

CUSTODY DIVISION

CUSTODY SERVICES

El Dorado County Sheriff’s Office operates two Jail Facilities. The South Lake Tahoe Facility (opened in 1973) has the rated capacity to house 158 inmates and the Placerville Facility (opened in 1988) has the rated capacity of 303 inmates and 8 out-patient medical beds. Both Jails operate like small cities with strict schedules and must comply with California Title 15 Requirements for Local Detention Facilities. Title 15 regulates the conditions of confinement relating to food, medical treatment, housing, and discipline. The jails mandated operations include meal service three times a day, laundry exchange, medical, education, phone services, commissary, church, exercise, mail delivery, and transportation services. They are in operation twenty four hours a day, seven days a week, including holidays.

Facility Maintenance and Security

The Jail facility sees at least three to four times the wear and tear during a normal business week compared to other buildings. The Placerville Jail has been in operation 27 years, the actual comparative use is that of being over 100 years old. The wear and tear on both Jails, from use and abuse, keeps Eldorado County Facilities Department employees very busy with deferred and daily maintenance. The largest project in 2015 included a full kitchen remodel at the Placerville Jail. As with all people food is the most basic need. Inmate’s behavior and officer’s safety are affected greatly by the conditions of confinement relating to food. This project was necessary to bring the kitchen up to date and replace old and dilapidated equipment to accommodate preparing and serving approximately 1000 meals a day 365 days a year. This was a bigger challenge for the kitchen staff who had to coordinate preparation off site with delivery and service while maintaining compliance with regulations.

AB109

AB109, The Prison Realignment Act, continues to add to the challenges to the Custody Division. County jails were never built to hold long term inmates who require more complex medical, mental health, and housing options. Our jail staff are constantly challenged with providing required services along with protecting the typical County Jail inmate, awaiting trial or serving a sentence, from the more criminally sophisticated and dangerous inmate. The different classifications of inmates prevent both jails from utilizing all 461 beds. The average daily inmate population for both facilities in 2015 was 385 inmates.

Victim Restitution

When Governor Brown signed Assembly Bill (AB) 109 and shifted responsibility for incarcerating certain inmates from state prisons to county jails a mechanism for designating County agencies to attach AB109 inmate’s individual trust account to pay victim restitution debt was needed. Senate Bill (SB) 1210 amended Penal Code 2085.5 to provide a process for attaching these inmate trust accounts to pay victim restitution in El Dorado County. In 2015 the Board of Supervisors designated the Sheriff’s Office as the agency responsible for collection of the restitution. The Jail in collaboration with the El Dorado County Courts have successfully implemented the Victim Restitution collection process.

Significant Accomplishments

- ** The Kitchen budgets and supervision of both facilities were consolidated for an estimated yearly saving of \$75,000.00.**
- ** Cameras were installed in all housing units to increase inmate safety and security as well as comply with the requirements of Prison Rape Elimination Act (PREA).**
- ** Officer safety measures for staff were improved by providing stab vests for all Correctional Offices.**

Inmate Services

While incarcerated inmates are provided many programs or services for self-improvement. Although given this opportunity, Inmates must have the will to succeed. It is important that our programs are structured to meet the basic needs of the inmate population. The success of these programs is based on the volunteers and instructors that teach and counsel the inmates. If administered correctly, Correctional Education can be a very effective tool to aid in changing offender behavior. The programs offered include:

- * HEARTS (Health Education Addiction Recovery Through Self-Responsibility)
- * Anger Management
- * MRT (Moral Recognition Therapy)
- * Adult Education (GED, ESL, Employment Success)
- * Pre-Release Class
- * Public Guardian
- * Veteran’s Services
- * Health and Human Services
- * Alcoholics Anonymous
- * Narcotics Anonymous
- * Overcomer’s Outreach
- * Faith Based Services
- * Culinary Vocational Training



Alternative Sentencing

Alternative sentencing through the Work Program or Weekend Program is available to those low risk offenders who have demonstrated they are not a public safety risk and have approval through the Court. The work program allows convicted individuals to give back to the community by working at approved sites. The weekend program allows offenders to serve their jail commitment on the weekends, or similar periods of time during the week, so they may maintain employment or care for their families. The offenders pay administrative fees to participate in the work program to lessen the cost to taxpayers.

Custody’s Current Challenges

Because of AB109, the National focus on recidivism reductions through programs, and the upcoming consequences of Proposition 47 Custody needs are changing. The biggest challenges are the management and housing of our growing mental health, female, and geriatric populations. In facilities originally designed to house pre-trial and short term sentenced inmates and 24 beds for female inmates the space needs are continually being assessed.

In 2015 the average daily population of female inmates, in both facilities, was 65; 20% of those were AB109 inmates. Through the years additional bunks have been added and housing units have been taken from the male population for the females. With housing units not built or designed for the increased female population problems often arise. Situations include; organizing programs, yard time and classroom schedules, and unauthorized communication with the male population; all increasing the challenges for staff.

With our growing prison population (average daily population of 87; 15% are female) the challenge of managing classifications and keep away from the non-prison offenders, gang members, or co-defendants are compounded. Also, with the longer sentences the aging offenders may have more specialized medical needs.



TRANSPORTATION UNIT

The Transportation Unit moves jail inmates to local courts, California Department of Corrections and Rehabilitation, Psychiatric Health Facility Unit, Tahoe jail, medical and dental treatment, the emergency room and outside agencies, and it extradites inmates from all over the country. Our duty is to ensure the safe and secure movement of jail inmates while outside the Placerville Jail. The Placerville Transportation Unit consists of 1 Sergeant, 2 Deputy Sheriffs, and 5 Correctional Officers. South Lake Tahoe has 5 alternate Transportation Officers who assist in transportation details as a collateral assignment to their correctional duties.

TOTAL TRANSPORTS

West Slope Inmate Transports=5677
Inmates to West Slope Courts=4535
Inmates picked up from outside EDC=313
Extraditions=15
Inmate Medical Appointments=90
PLV/SLT Inmate Transfers=574
CDC Inmate Transfers=121
State Hospital Inmate Transfers=29



COURT SECURITY / BAILIFFS

The sheriff's Office provides security for court operations within El Dorado County. A Sheriff's Sergeant supervises all of the courthouses in the County. There are 9 full time courtrooms in five different locations throughout the county in South Lake Tahoe, Placerville and Cameron Park. Deputy Sheriffs work as bailiffs providing security to the judges and the court. Sheriff Security Officers staff the screening checkpoints and screen all people entering the court buildings. Sheriff Security Officers routinely perform perimeter checks of the court facilities. Sheriff Security Officers also search each courtroom prior to opening to ensure no contraband is present. In 2015, the implementation of the joint jurisdictional wellness court on the reservation began. The Court Services Unit collaborated with several other tribal and government agencies to facilitate the successful launch of the pioneering program. The project generated nationwide interest and results have been promising thus far.



Statistics

- There were 6,127 bookings (intakes) in 2015. Some people were booked more than once. One person was arrested and booked 26 separate times.
- There were 5,192 releases from jail. 54 were released due to Prop 47 sentencing reductions.
- There were 26,478 inmate visitations by the public,
- 473,880 meals were prepared and served,
- 13,872 medical services were provided,
- 317,948 medications were administered,
- 5,027 reports written due to problem inmates, 194 of those were assaults on staff,
- 11,310 inmates were moved by Transportation to court, medical, between facilities, etc.

SPECIAL PROGRAMS

SHERIFF’S TEAM OF ACTIVE RETIREES (STARs)

The STAR Program is composed of senior citizens who are familiar with El Dorado County. The program includes 105 volunteers both in Placerville and South Lake Tahoe. These trained volunteers are used to enhance vital crime prevention services and community awareness. STAR vehicle units conduct high visibility patrols, assist the crime prevention unit, conduct business/home security checks, provide traffic control for accidents and special events, and assist the Sheriff’s Office with administrative duties. STARs function as eyes and ears of the Department and any suspicious activity observed is immediately reported to the Sheriff’s Office. The STAR Program is a Crime Prevention Program exercising proactive law enforcement principles. All volunteer members have an interest in helping the El Dorado County Sheriff’s Office and their community. Working in conjunction with many local businesses and organizations, the STAR volunteers are often utilized to deliver food baskets and holiday dinners to those in need. They are considered an integral part of many special events throughout the year including the Every 15 Minutes program, El Dorado County Fair, Food Bank Holiday Food Delivery, Drug Take Back Day, and Red Ribbon Week.

Members must attend a two week STAR Training Academy as well as the Citizen’s Academy. At the STAR Training Academy volunteers gain knowledge of patrol procedures, radio communications, traffic control, graffiti abatement, vacation checks and Sheriff’s Office policy and procedures.

The volunteer approach is termed passive law enforcement and is being successfully used in many cities and counties in the state. Tasks performed by STARS allow Sheriff Office employees to dedicate more time in serving the public. As volunteer workers, they have an obligation to the public we serve to maintain the highest ethical standards in both personal and official conduct.



2015 HIGHLIGHTS

The STARs performed 26,242 Volunteer hours They worked 68 specialized community events. Duties: Patrol, County Mail, Radar Trailer, Vacation Checks, Alarms, Booking, Assisting with CCW Permits, You Are Not Alone (YANA) Program, EDH and Georgetown Substations, Fleet, Citizen’s Academy, STAR Academy, Neighborhood Watch Programs, Com Van (Mobile Command Post Vehicle and Trailer) deployments, Mall Patrol (at Christmas), Graffiti Abatement Program, Records and many others.

CITIZEN’S ACADEMY

The El Dorado County Sheriff’s Office offers the Citizens Law Enforcement Academy semi-annually. This Academy familiarizes El Dorado County residents with many aspects of law enforcement and the role the Sheriff’s Office plays in the community. By attending the Academy, citizens will develop a better understanding of the guidelines under which an officer functions and why officers handle situations the way they do. Also discussed is the role of law enforcement and how members of the community can come together to address serious crime and social issues. The Citizens Academy is one night a week for 12 weeks which includes instruction by 20 Sheriff’s Office staff members.

In 2015, the Sheriff’s Office hosted 2 academies with 54 attendees.



EXPLORERS

The El Dorado County Sheriff’s Office offers Law Enforcement Explorer Post #457 to youth in the community. The program is part of Learning for Life’s career education program for young men and women who are 15 (can be 14 if you have completed the eighth grade) through 20 years old. The purpose of the Explorer Program is to provide experiences that help young people mature and to prepare them to become responsible and caring adults. The result of the Sheriff’s Office Explorer Program is designed to help youths pursue, grow and develop their special interest in law enforcement.

EXPLORER Training

Explorers trained for over 160 hours in 2015. POST 457 meets each Wednesday of the month for 3 hours of law enforcement training. These training topics include history of law enforcement, building clearing, criminal justice system, radio procedures, basic patrol procedures, report writing, criminal law, juvenile law, traffic law, procedures of investigation, crime prevention, accident investigation, crime scene investigation, fingerprinting and classification, narcotics, arrest and search, domestic violence, physical education training and honor guard. Efforts are made every week providing experiences which develop all members into young professionals ready for a career in law enforcement.



Community Service

In 2015, the El Dorado County Sheriff’s Office Explorers provided over 7,600 hours of community service work. They assisted with many county events, including Search and Rescue Crab Feed, County Fair, 4th of July Fireworks Spectacular, National Night Out, Toys for Tots, County Career Fairs, Kids Expo, Friends of the NRA Dinner, Under Aged Drinking Prevention, and Club Live. 2015 was also the first year our explorers traveled outside of El Dorado County to assist with neighboring explorers at their community service events. 250 community service hours were worked outside of El Dorado County including at the Elk Grove Law Enforcement Memorial Ball and the Citrus Heights Police Activities Banquet.

NRA Teach Freedom Grant

The El Dorado County Sheriff’s Office Explorer POST 457 has been awarded a grant from the NRA Foundation Grant Program Teach Freedom. This grant is instrumental in funding supplies, equipment and firearms for our explorers to be provided the best firearm education possible. NRA’s goal is to provide funding for firearm education that promotes safe and responsible firearm ownership. Explorers are provided firearm training to help develop knowledge, skills, and techniques needed to become law enforcement officers and responsible gun owners.

EXPLORERS CONTINUED

Mohave Law Enforcement Explorer Academy (MLEEA)

The MLEEA Explorer Academy provides Explorers with basic law enforcement training and an insight to team building by placing the explorers in a unique on-site Police Academy setting held in Lake Havasu City. This academy is a live in, military like academy designed at preparing explorers for a job in law enforcement. MLEEA explorers received academy instruction, enduring 130 hours of training within the eight-day program. Training included instruction on defensive techniques, drill, crime scene investigation, SWAT operations, domestic violence situations, high-risk traffic stops, Taser presentation, building searches, physical education training and honor guard. El Dorado County Sheriff's Explorer POST 457 sent 6 explorers to the academy this year. Of the 40 explorers attending the academy El Dorado County Sheriff's Office Explorers received the most outstanding explorer award, most physically fit female, the most improved explorer award.



Competitions

In 2015, explorers attended three competitions and brought home eight trophies.

EDSO Explorer Regional Training Day

Tubular Assaults (mass transit bus assault)
Officer Down
Felony Traffic Stop
Building Clearing

Central Valley Explorer Competition

3rd Place - Hostage Negation
3rd Place - Domestic Violence
3rd Place - Crime Scene Investigation

Riverside Explorer Competition

1st Place - Unknown Risk Traffic Stop
1st Place - Officer Down Scenario
1st Place - Individual female obstacle course Rachel Dehlinger
3rd Place - Crime Scene Investigation
5th Place - Individual male obstacle course Steven Ross



EL DORADO MULTIDISCIPLINARY TEAM

The Multi Disciplinary Team (MDT) is a cooperative effort of local law enforcement and mental health professionals with the goal of providing a mechanism for early intervention on behalf of individuals suffering from mental disease. The team provides a platform for better and more open dialogue among those who interact with the mentally unstable. The team's goal is to identify individuals who are exhibiting behaviors that may result in future law enforcement contacts and attempt to get them the help they need.

The MDT continues to succeed. The team meets on a monthly basis and handles about 12 cases each month. The team has proven effective in a number of cases that were resolved prior to crisis and resulted in lower calls for service and increased public safety.

AUTISM REGISTRATION

The El Dorado County Sheriff's Office in conjunction with other County and State agencies has provided the autism registration form to members of El Dorado County living with a child or adult with autism.

The information provided will be utilized to identify the residence and the individual with autism. This information will be entered into the El Dorado County Sheriff's Office dispatch computer system. This allows County dispatchers to access the provided information in the event we receive a call for service from the identified residence. The El Dorado County Sheriff's Office is committed to serving our communities with the highest level of service, compassion and understanding. Providing this information for our deputies will allow them to understand the situation thoroughly and provide the highest level of service during a time of need.

The El Dorado County Sheriff's Office understands HIPAA regulations and the right to medical privacy. The information provided is entered into the computer system and the form deleted. The information will be accessed under a right to know and need to know basis. The information is intended to serve the autistic community and their families in a positive manner, not in a manner to highlight their condition.

The El Dorado County Sheriff's Office encourages anyone with a member in their household to register and update the information on an annual basis. This will allow the El Dorado County Sheriff's Office the ability to maintain current records and continued service. Pursuant to HIPAA regulations 164.512(f) and 164.512(j).

LAKE TAHOE SECRET WITNESS PROGRAM

Program History

In 1980 the Secret Witness Program was formed as a result of the death of teenager Richard E. Swanson. Richard was killed during a robbery of a South Lake Tahoe gas station. Businesses and citizens raised nearly \$10,000 as reward for information leading to an arrest of Richard's killer. This tragedy created the base for what has become a very successful law enforcement tool in South Lake Tahoe and surrounding communities.

Purpose:

Because Sheriff's Deputies are often unable to know everything that is going on in the community, citizen participation in law enforcement and crime prevention is crucial. The Secret Witness Program is designed to provide incentives to community members for becoming involved in crime prevention and resolution. Citizens are offered opportunities to make the community a safer place to live by becoming involved in crime prevention. Besides making a positive contribution to the community, individuals can enjoy some monetary reward for their efforts thanks to the Secret Witness Program.

How the Program Works:

The Secret Witness Program relies on the anonymous tips of community members. Any individual can make an anonymous phone call to a 24-hour, 7-days a week hotline and provide the information. To become a secret witness please call the Secret Witness Hotline at: (530) 541-6800.

The information is then sent to the law enforcement agency responsible for acting on the tip. The agency checks up on the tip, and if the tip leads to an arrest of a criminal then the individual who offered the tip is contacted and offered a reward. The rewards vary depending on the value of the information. The more valuable the information, the bigger the reward.

Reward money is drawn from a pot that is funded by donations from local businesses and individuals.

AIR SQUADRON

The El Dorado Sheriffs Air Squadron has been serving the county since 1985. The Squadron is an all-volunteer group consisting of pilots and observers. The missions flown fall into five general categories: transport, orientation, surveillance, emergencies and search/rescue. The Squadron is called upon to transport the Sheriff, his deputies, witnesses or other personnel for a variety of reasons. There is also a formal flight orientation program which familiarizes new and existing employees with the county by providing a birds-eye view of the road network and land forms. Finally, the squadron is utilized for surveillance activities, often related to drug cases. In addition, the squadron is available for use during emergencies or natural disasters, and for select search and rescue operations.

The Squadron consists of 22 members, 17 of whom are active pilots. Six pilots have private certificates and eleven have commercial certificates. Fifteen pilots have instrument ratings.

The Squadron consists of 15 aircraft including one helicopter. In 2015, the Squadron flew 14 missions, which were flown by 8 different pilots.



SHERIFF'S POSSEE

The Sheriff's Posse of El Dorado County is a 501(c)3 charitable organization and is comprised of a collection of citizens from in and around El Dorado County.

Since its inception in 2001, the Sheriff's Posse has evolved into an organization that assists the Sheriff's Office in many varied ways; an annual picnic for all personnel, their families and Posse members; scholarship opportunities; and specialty items when needed. The Posse also makes an annual donation to the Explorer Post #457 and the Sierra Law Enforcement Chaplaincy programs; two other organizations in place to assist the Sheriff's Office and community.

The Posse is an integral part of the support mechanism for the men and women who work to protect you. The Posse members are very proud of their organization and what it represents.

THRIVE WITH 10-35

Thrive with 10-35 was established at the El Dorado County Sheriff's Office in 2011. The mission of the organization is to promote the well-being of all Sheriff Office members and their families. They provide information, support and practical assistance to help law enforcement families successfully survive and thrive during the Sheriff's Office employee's law enforcement career and beyond. Their hope is to better equip employees and their families to manage the challenges of law enforcement, that spouses and partners will feel more secure and connected to their loved ones and law enforcement marriages and relationships will be more stable.

The vision of the EDSO Thrive With 10-35 program; is that law enforcement families will be equipped to manage the challenges of law enforcement careers. To provide spouses and partners with tools to strengthen and understand law enforcement relationships. To offer a secure support system to our families, sustaining their connection to their loved one and our LEO families will thrive.

In 2015, Thrive with 10-35 participated in Swearing in Ceremonies, welcoming new hires and their families to the Sheriff's Office. Thrive hosted a Book Club group, held Bunco nights, provided meals for Sheriff's Office families who experienced illness or medical needs and hosted Sweets with Treats with Santa. These events assisted in building and developing relationships with the Sheriff's Office employees and their families.

CHAPLAINCY PROGRAM

The Sierra Law Enforcement Chaplaincy (SLEC) works to help law enforcement officers and staff, victims of crime and the citizens of El Dorado County. Service is provided 24/7 by SLEC and its volunteer staff.

Our primary mission is to respond to crises and we do this 24 hours a day, seven days a week. We respond to calls for assistance with suicide prevention, death notifications and counseling.

SLEC staff participate in ride-a-longs on a regular basis to maintain positive relationships with deputies and detectives. In addition, SLEC staff works with dispatchers and non-sworn staff. We also provide training to law enforcement staff on a wide variety of topics related to law enforcement.

GET SOCIAL WITH US @

www.facebook.com/eldoradosheriff

www.edso.org

<https://twitter.com/eldoradosheriff>

<http://pio.edso.org>

Main Office

300 Fair Lane
Placerville, CA 95667
(530) 621-5655

South Lake Tahoe

1360 Johnson Blvd. #100
South Lake Tahoe, CA
96150
(530) 573-3000

Investigations

471 Pierroz Rd
Placerille, CA 95667
(530) 642-4703

Placerville Jail

300 Forni Rd
Plkacerville, CA 95667

South Lake Tahoe Jail

1051 Al Tahoe Blvd
South Lake Tahoe, CA
96150

El Dorado Hill Substation

4354 Town Center Dr.
Suite #112
El Dorado Hills, CA 95762

Georgetown Substation

6101 Front St. #4
Georgetown, CA 95634