



ANNUAL REPORT 2014



El Dorado County Sheriff's Office
John D'Agostini Sheriff - - Coroner

TABLE OF CONTENTS

4 | Introduction

5 | Message From The Sheriff

6 | Mission & Vision

7 | Organizational Chart

8 | County Demographics & Facts

9 | Sheriff's Office at a Glance

10 | Year in Review

11 | Part 1 Crimes

12 | Criminal Records

13 | Domestic Violence

14 | Warrant Report

15 | Records Report

16 | Year in Review Statistics

17 & 18 | New in 2014

18 | Administrative Services

19 | Executive Secretary to Sheriff

19 | Honor Guard

19 | Fiscal / Payroll & Public Admin

19 | Peer Support

20 | Support Services Division

21 | Personnel & Background Unit

21 | Community Service Officers

22 | Information Technology

22 | Vehicle Abatement

23 | Coroner

23 | Training

24 | Civil

25 | Records

25 | Property & Evidence

26 | Communications

26 | Dispatch

26 | Alarms

27 | Patrol & Investigations Division

28 | Patrol

28 | Reserves

29 | Field Training Officer

29 | Ride Along Program

30 | K9

31 & 32 | Explosive Ordnance Disposal

33 | Special Weapons and Tactics (SWAT)/CNT

34 | Crisis Intervention Team (CIT)

35 | Gang Intel Detail

36 | Fleet

36 | School Resource Officer Program

37 | Special Enforcement Detail

38 | Public Information Officer

39 & 40 | Office of Emergency Services

41 | Boat Patrol

42 | Dive Team

TABLE OF CONTENTS

42 & 43	Search and Rescue
44	OHV—Rubicon Patrol
45	Investigations
45	Crimes Against Persons Unit
46	290 Registrant Enforcement
47	Financial Crimes Enforcement
48 & 49	Crimes Against Property Unit
50	High Tech Crimes
51 & 52	Narcotics / WENET
53	Narcotics / SLEDNET
54	Crime Scene Investigations
54	Crime & Intelligence Analysis Unit
55	Custody Division
56 & 57	Custody Services
58	Alternative Sentencing & Work Program
58	Transportation
59	Custody Gang Unit
60	Court Security & Bailiffs
61	Special Programs
62	Sheriff's Team of Active Retirees
63	Citizen's Academy
63	Explorers
64	El Dorado Multi-Disciplinary Team
64	Autism Registration
64 & 65	Lake Tahoe Secret Witness Program
65	Air Squadron
65	Sheriff's Posse
66	Thrive with 10-35
66	Chaplaincy Program
67	Sheriff's Office at Work

INTRODUCTION



- ♦ Message from the Sheriff
- ♦ Mission & Vision
- ♦ Organizational Charts
- ♦ County Demographics & Facts
- ♦ Sheriff's Office at a Glance



INTRODUCTION



MESSAGE FROM THE SHERIFF

On behalf of all of the employees of the El Dorado County Sheriff's Office, I am presenting with pride our Annual Report for 2014. This report illustrates all of the Sheriff's Office operations and the work that has been provided over the past year, 24 hours a day, seven days a week.

We have continued to provide the wide range of Sheriff's Office services in keeping with our Mission and Vision statements, utilizing modern methods and traditional values with total enforcement, professionalism and care for our communities.

In 2014 the Sheriff's Office was faced with two catastrophic wild fires. The Sand and King fires threatened the safety of our citizens and communities. Our resources were stretched to the limit in both disasters. Our staff rose to the challenge and not only provided for the safety of our citizens threatened by the fires but continued to provide all of our daily functions without interruption.

During this past year we continued to practice fiscal responsibility and manage our budget effectively.

As I move into my second term we are faced with many challenges. The Realignment Act of 2011, commonly known as AB 109, will continue to challenge our ability to safely manage the jails and provide programs to the inmates to reduce recidivism. In 2014 the voters passed Proposition 47 which reduced many crimes from felonies to misdemeanors. Because of Proposition 47 the Sheriff's Office will be working to develop new methods to control and solve crime.

We will be continuing to work with the Board of Supervisors to provide for a new Public Safety Center to replace our antiquated and dilapidated facilities. We will continue to manage our budget to provide a significant return on investment of the taxpayer's monies while delivering quality innovative service.

I would like to thank each of you for allowing us the honor of serving you and to thank our many community and allied agency partners for our close working relationships.

Thank you for your interest in our 2014 Annual Report.

Sincerely,

John D'Agostini
Sheriff-Coroner
Public Administrator

INTRODUCTION

OUR MISSION

"The mission of the El Dorado County Sherriff's Office is to uphold the law through the investigations and enforcement of criminal and civil law, to provide leadership and law enforcement support to allied law enforcement agencies, to deliver consistent and humane treatment to those placed in our care and custody, and to perform these responsibilities in a manner that is responsive to the needs of our community and faithful to the Constitution of the United States and the Constitution of the State of California."

OUR VISION

"A modern approach to traditional law enforcement values;

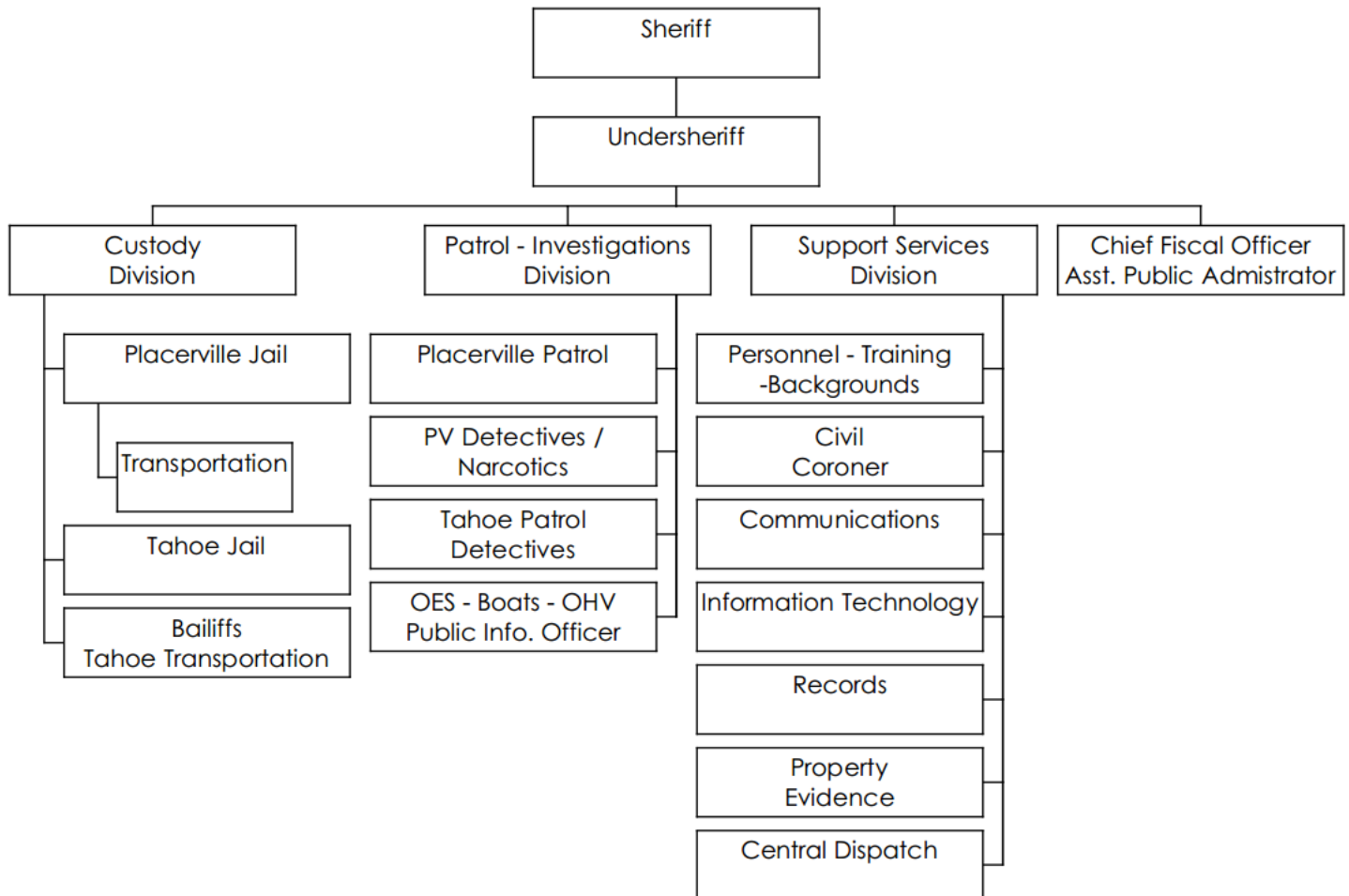
Total enforcement on crime and criminals;

Total care for victims, witnesses, and the community;

Total professionalism, through training and by example"

INTRODUCTION

ORGANIZATIONAL CHART



INTRODUCTION

COUNTY DEMOGRAPHICS & FACTS

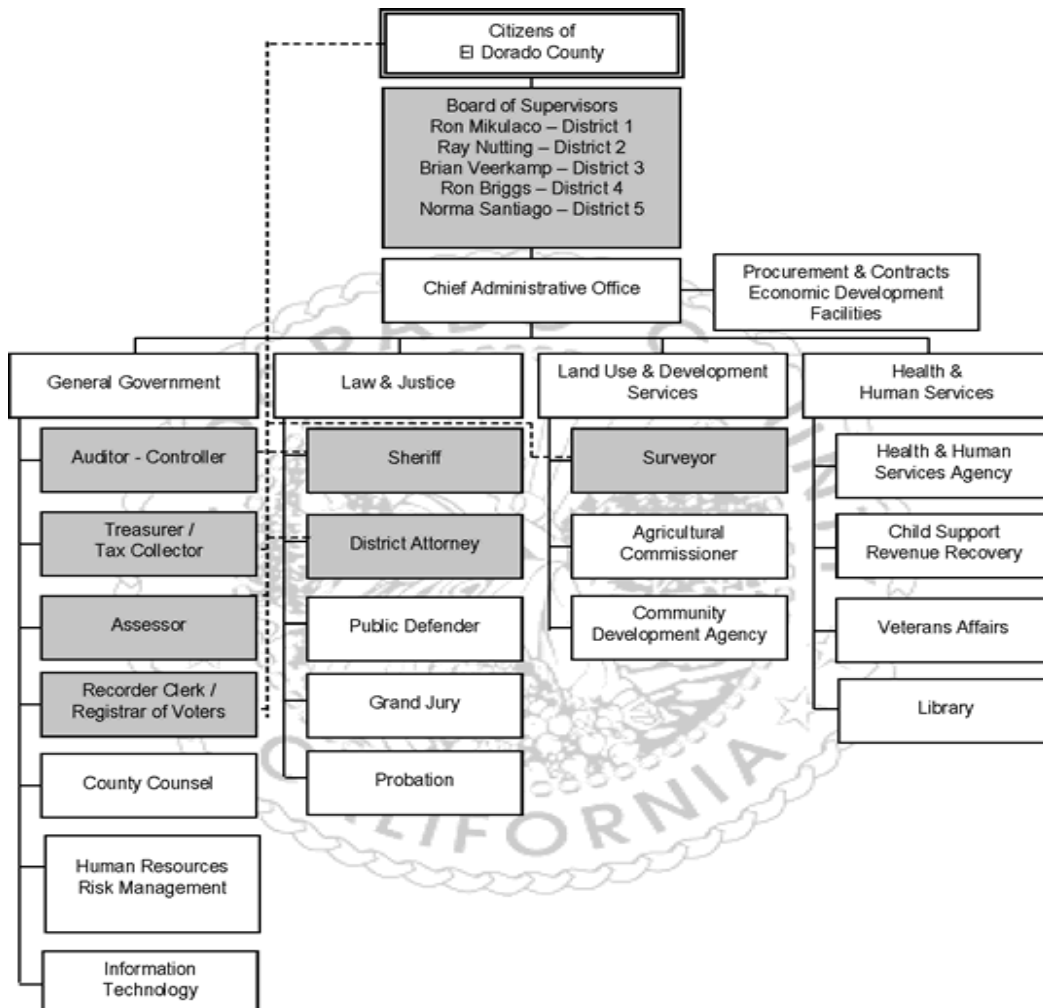
Total Population: **2013** **2014** **%Change**

182,958 183,957 .55%

El Dorado County Land Area: 1,711 square miles

(source: Dept. of Finance)

The Sheriff's Office serves all the unincorporated areas in El Dorado County, and frequently provides service to the two incorporated cities of Placerville and South Lake Tahoe.



INTRODUCTION

SHERIFF'S OFFICE AT A GLANCE

Budget FY 13/14	Budget	Actuals
Expenditures	\$57,897,959	\$50,613,333
Revenue	\$16,172,015	\$14,090,005
Net County Costs	\$41,725,944	\$36,523,327

Total Staff Positions: 371 employees

Peace Officer Positions:

Sheriff	1
Undersheriff	1
Captain	3
Lieutenant	7
Sergeant	24
Deputy Sheriff's	128

Correctional Officer Positions

Correctional Lieutenant	2
Corrections Sergeant	11
Correctional Officer	85

Civilian Positions

Non Sworn Manager	3
Professional Civilian Positions	98
Security Officers	9

YEAR IN REVIEW

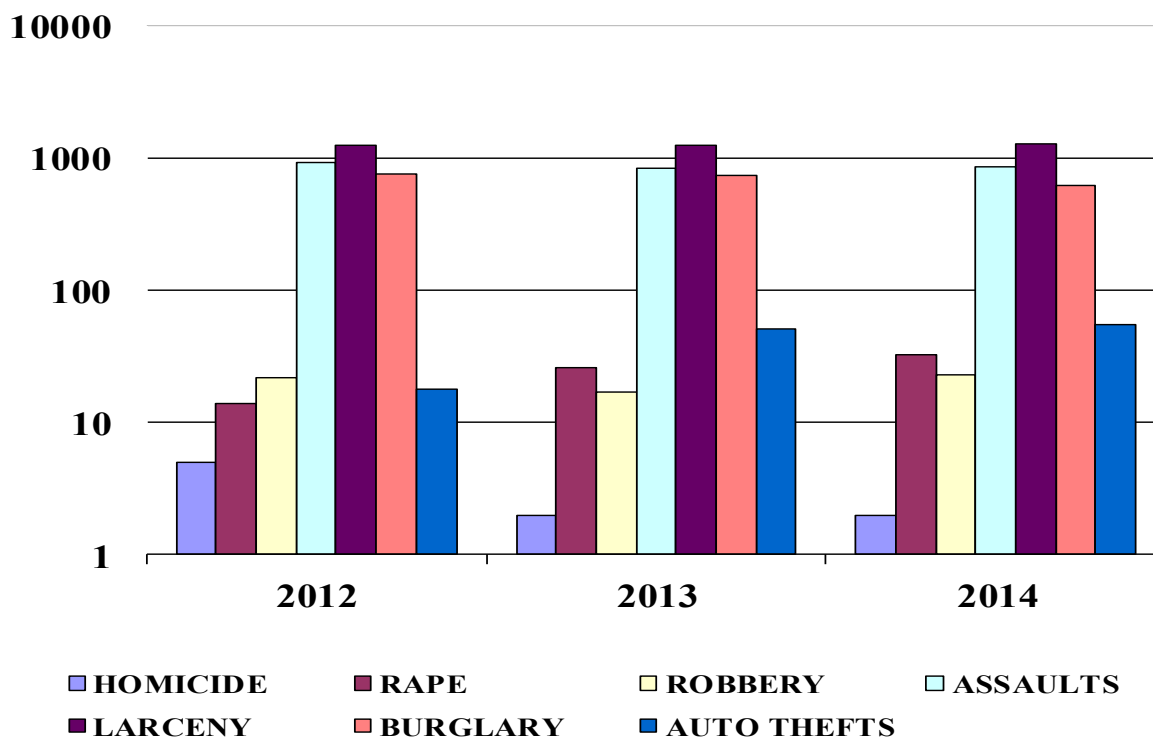


- ♦ **Part I Crimes**
- ♦ **Criminal Records**
- ♦ **Domestic Violence**
- ♦ **Warrant Report**
- ♦ **Records Report**
- ♦ **Year in Review Statistics**
- ♦ **New in 2014**

YEAR IN REVIEW

PART I CRIMES

	2012	2013	% CHANGE	2014	% CHANGE
HOMICIDE	5	2	-60%	2	0%
RAPE	14	26	86%	33	27%
ROBBERY	22	17	-23%	23	35%
ASSAULT	950	841	-11%	872	4%
LARCENY	1,252	1,276	2%	1299	2%
BURGLARY	772	749	-3%	631	-16%
AUTO THEFTS	18	52	189%	56	8%



Statistical Report
prepared by Records Division

YEAR IN REVIEW

CRIMINAL RECORDS

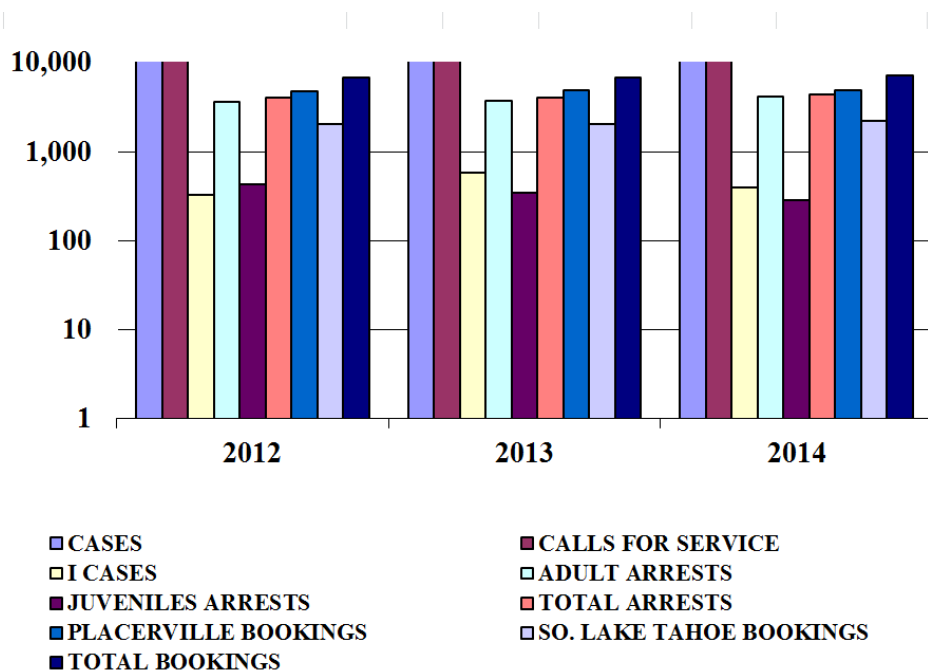
	2012	2013	% CHANGE	2014	% CHANGE
CASES	11,520	11,702	2%	12,073	3%
CALLS FOR SERVICE	67,007	68,911	3%	72,178	5%
I CASES	325	578	78%	395	-32%

ARRESTS:

ADULT ARRESTS	3,685	3,761	2%	4,179	11%
JUVENILE ARRESTS	431	351	-19%	289	-18%
TOTAL ARRESTS	4,116	4,112	0%	4,468	9%

BOOKINGS:

PLACERVILLE BOOKINGS	4,778	4,877	2%	4,912	1%
SO. LAKE TAHOE BOOKINGS	2,080	2,055	-1%	2,247	9%
TOTAL BOOKINGS	6,858	6,932	1%	7,159	3%



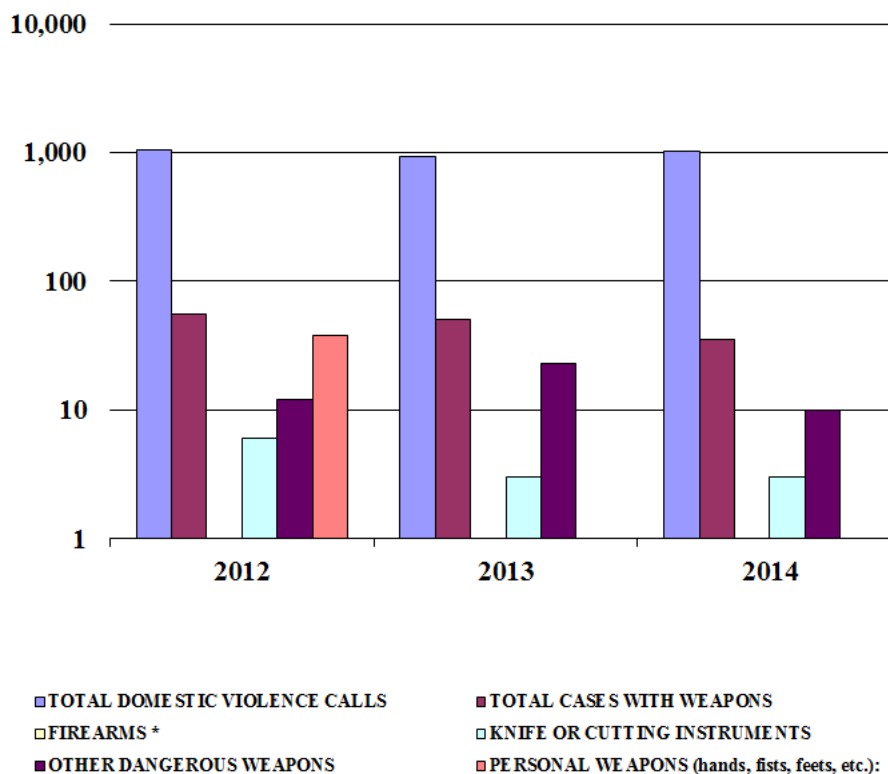
Statistical Report
prepared by Records Division

YEAR IN REVIEW

DOMESTIC VIOLENCE

	2012	2013	% CHANGE	2014	% CHANGE
TOTAL DOMESTIC VIOLENCE CALLS	1,039	931	-10%	1,023	10%
TOTAL CASES WITH WEAPONS	56	50	-11%	35	-30%
FIREARMS*	0	1	100%	1	0%
KNIFE OR CUTTING INSTRUMENT	6	3	-50%	3	0%
OTHER DANGEROUS WEAPONS	12	23	92%	10	-57%
PERSONAL WEAPONS (hands, fists, feet etc.):	38	23	-39%	22	-4%

* Negative or zero values can not be plotted

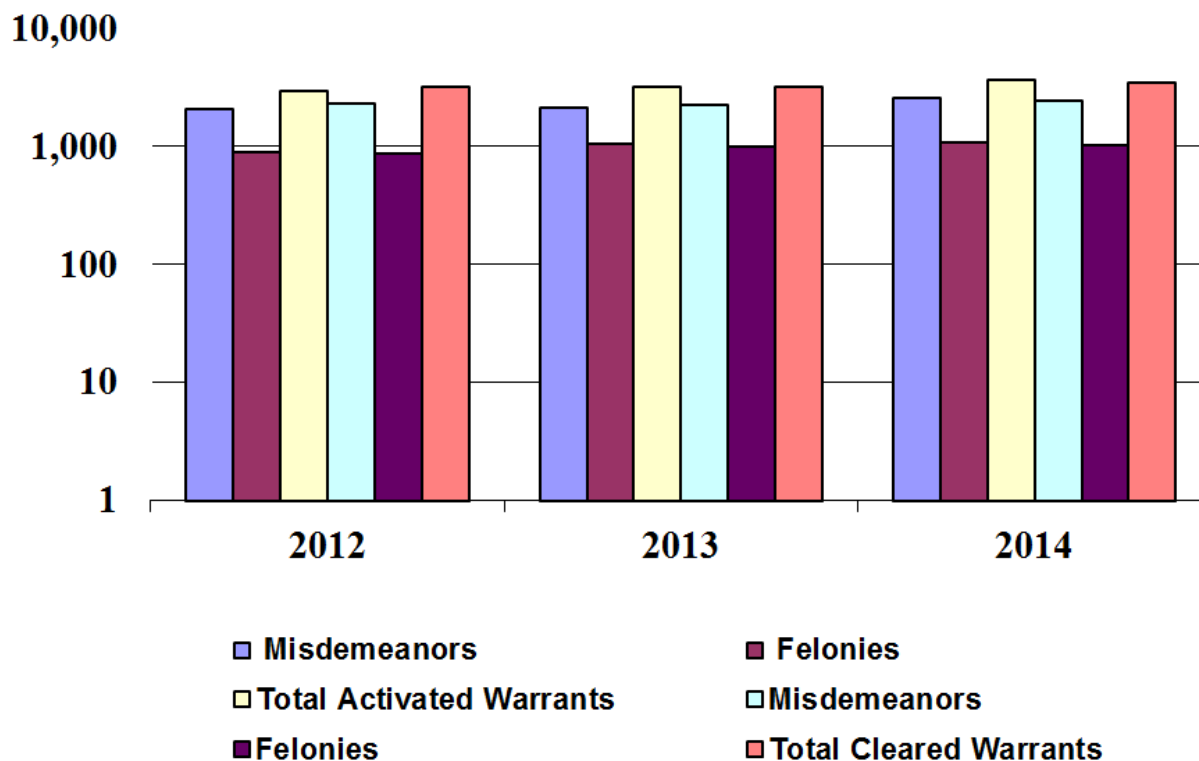


Statistical Report
prepared by Records Division

YEAR IN REVIEW

WARRANT REPORT

	2012	2013	% CHANGE	2014	% CHANGE
ACTIVATED WARRANTS					
Misdemeanors	2,086	2,415	3%	2,589	21%
Felonies	902	1,064	18%	1,092	3%
Total Activated Warrants	2,988	3,209	7%	3,681	15%
CLEARED WARRANTS					
Misdemeanors	2,331	2,239	-4%	2,468	10%
Felonies	866	999	15%	1,023	2%
Total Cleared Warrants	3,197	3,238	1%	3,491	8%



Statistical Report
prepared by Records Division

YEAR IN REVIEW

RECORDS REPORT

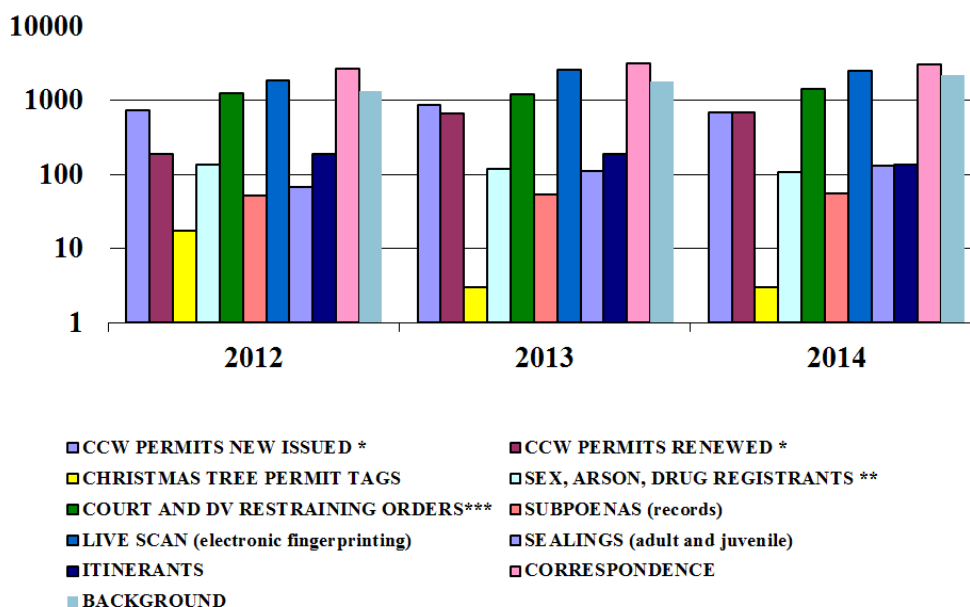
	2012	2013	% CHANGE	2014	% CHANGE
CCW PERMITS NEWLY ISSUED *	728	863	19%	680	-21%
CCW PERMITS RENEWED*	188	656	249%	673	3%
CHRISTMAS TREE PERMIT TAGS	17	3	-82%	3	0%
SEX, ARSON, DRUG REGISTRANTS**	136	117	-14%	108	-8%
COURT AND DV RESTRAINING ORDERS***	1,234	1,198	-3%	1,411	18%
SUBPOENAS (records)	52	53	2%	55	4%
LIVE SCAN (electronic fingerprinting)	1,830	2,561	40%	2,482	-3%
SEALINGS (adult and juvenile)	68	109	60%	129	18%
ITINERANTS	187	190	2%	133	-30%
CORRESPONDENCE	2,685	3,132	17%	3,053	-3%
BACKGROUND	1,322	1,797	36%	2,153	20%

*Carry Concealed Weapon

**new registrants: 0 arson, 79 narcotics, 27 sex registrants, 2 gangs, total 375 sex registrants in county per Megans as of 12/31/2014

***new restraining orders: 846 domestic violence, 565 other (harassment, work violence, criminal protective orders, etc.)

Negative or zero values can not be plotted



Statistical Report

prepared by Records Division




YEAR IN REVIEW

OFFICER INVOLVED SHOOTING

2010 2011 2012 2013 2014


0 0 1 1 1



USE OF FORCE


2010 2011 2012 2013 2014

12 11 19 37 69



CASINO RELATED CRIMES

	2013	2014
Crime Types		
Assault	8	8
Burglary	2	2
Theft	15	18
Controlled Substance	56	54
All Other	71	98
TOTAL	155	180



YEAR IN REVIEW

NEW IN 2014

Sacramento Crime Alert

In 2014, the El Dorado County Sheriff became a law enforcement partner with the Sacramento Crime Alert organization.

The Sacramento Citizen's Crime Alert Program encourages members of the community to assist local law enforcement agencies in the fight against crime by overcoming the two key elements that inhibit community involvement: fear and apathy.

Crime Alert provides a telephone number and Web Tips to encourage citizens in the community to volunteer vital information helpful to law enforcement agencies in their fight against crime.

Crime Alert relies on cooperation between the police, the media, and the general community to provide a flow of information about crime and criminals. To be eligible for a reward, the tip **must** be sent to Crime Alert by **T**ext, **I**nternet or **P**hone.

Calls are received at the local Crime Alert tips line phone. This phone is a stand alone instrument which does not provide caller ID, and conversations are not recorded. The Crime Alert police or civilian Coordinator receiving the information completes the tips information form, makes initial inquiries and then passes the information to the investigating officer. Calls are accepted regarding any publicized request for information, such as "Crime of the Week" or such other crime(s) the caller has knowledge of.

By guaranteeing a caller's anonymity Crime Alert allows the caller to give information in a positive atmosphere without the prospect of retribution. By offering cash rewards for information leading to indictment or arrests, the program encourages otherwise reluctant callers to provide information.

You could get a cash reward of up to
\$1000

CALL 443-HELP or 1(800)-AA-CRIME

TEXT 274637 (CRIMES) SACTIP



"Sheriffs...El Dorado County"

In early 2013, our local station Foothill 7 Television, volunteered, for no compensation, to assist The Sheriff's Office to produce some training videos, recruiting videos and a series of programs to educate the public on the resources available and daily activities of The Sheriff's Office. In harmony with Sheriff D'Agostini's vision of transparency in keeping the citizens of El Dorado County informed of Sheriff's Office activities, the El Dorado County Sheriff's Office partnered with Foothill 7 to develop such video projects. Since 2013, and continuing to the present day, Foothill 7 began accompanying and videotaping Sheriff's Office employees in the performance of their duties, both in their office and in the field, with a vision of developing a television show that would allow the citizens of El Dorado County to observe firsthand, the job the men and women of the El Dorado County Sheriff's Office perform on a daily basis.

After cataloging over one year of recorded material, Foothill 7 Television held a series of discussions with their contemporaries at the local FOX Affiliate (KTXL FOX 40). As a result of those discussions, KTXL FOX 40 joined with Foothill 7 to broadcast 26 original episodes of a weekly television show entitled: "Sheriffs...El Dorado County." The episodes began September 20th, 2014 and are shown at approximately 8:30 PM every Saturday, and again at 11:30 PM every Sunday.



ADMINISTRATIVE SERVICES



- ♦ **Fiscal / Payroll & Public Administrator**
- ♦ **Executive Secretary to the Sheriff**
- ♦ **Honor Guard**
- ♦ **Peer Support**

ADMINISTRATIVE SERVICES

Executive Secretary Law and Justice

The Executive Secretary to the Sheriff provides confidential administrative assistance to the Sheriff, the Under-sheriff, and other supervisory and professional staff.

The Executive Secretary to the Sheriff has a working knowledge of department policies and procedures and provides assistance to other County Departments, outside agencies, community organizations, and the public with questions and concerns relating to the Sheriff's Office. Calls and visitors are screened, calendars and meetings are scheduled, all while maintaining a cohesive working relationship with all county departments, other agencies, the public, and Sheriff's Office staff.

Honor Guard

The Sheriff's Honor Guard consists of 15 deputies. The unit became active within the Sheriff's Office many years ago to conduct burial ceremonies for deceased active and retired personnel.

Throughout the years, the Honor Guard has conducted flag raising ceremonies for various schools and libraries. They have been present during Veterans Day ceremonies and the Peace Officer's Memorial dedication every year in Sacramento. The Honor Guard is often called upon to present the colors at various events and to attend funerals of fallen law enforcement officers throughout Northern California.

The official Honor Guard uniform and badge are different from the traditional El Dorado County Sheriff's Office uniform. Honor Guard members wear a uniform similar to the Marine Corps dress blues uniform, utilizing the traditional Sheriff's Office colors. The badge was designed especially for the Honor Guard and is issued to only Honor Guard members.

The Sheriff's Honor Guard is strictly a volunteer unit.

Fiscal / Payroll & Public Administrator

The Fiscal Administration Section supports the operational divisions in the Sheriff's Office in areas including budgeting, accounting, payroll, procurement and contracting services. The Fiscal Administration Section also shares space and works collaboratively with staff from the Civil Section as well as the Assistant Public Administrator, who is responsible for administering the estates of people who die without a will or qualified person to administer the estate.

Peer Support

The El Dorado County Sheriff's Office Peer Support Program was developed in 2009 resulting from recognition of the need for emotional support. The purpose of the program is to assist personnel with critical incident stress and stress created in their personal and/or professional lives. Quite simply, it is to support our valuable employees' well-being. This includes on and off duty support and referrals for colleagues during a crisis or other stress related matters.

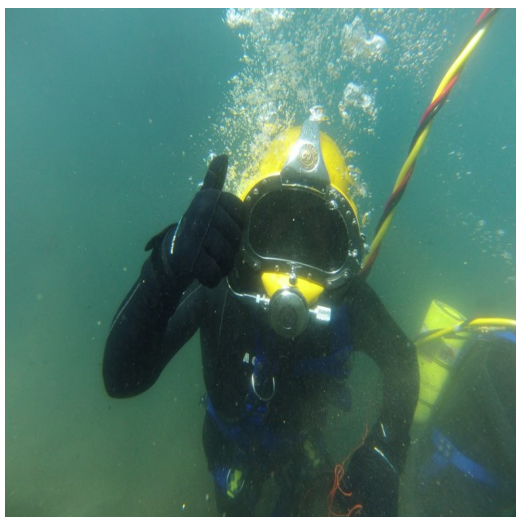
The team consists of employees who have a desire to assist peers with emotional support during stressful times. There is one Lieutenant and one Sergeant designated as Program Adviser and Program Coordinator. The Team is staffed with a Psychologist, one Mental Health Counselor, and two Chaplains. The team is represented by custody, patrol, records, dispatch and investigations personnel. Currently there are 15 team members and we are always striving to increase our membership. We provide ongoing training to our team members to better their abilities to assist those who are in need. This year the team received training in substance abuse recognition, crisis intervention training, and family survival. The Peer Support Program continuously searches for new and better resources to assist peers in their times of need.

In keeping with our "In Confidence policy", statistical data is not tracked.

SUPPORT SERVICES DIVISION



- ◆ Personnel & Background Unit
- ◆ Community Service Officers
- ◆ Information Technology
- ◆ Vehicle Abatement
- ◆ Coroner
- ◆ Training
- ◆ Civil
- ◆ Records
- ◆ Property & Evidence
- ◆ Communications
- ◆ Dispatch
- ◆ Alarms



SUPPORT SERVICES DIVISION

Personnel & Background Unit

Personnel Unit

The Personnel Unit conducts all Sheriff's Office pre-employment testing. Upon submitting an application for a current recruitment and meeting the requirements for the position applied for, the applicant undergoes a testing process that may include:

- » A written examination
- » A physical ability test
- » An oral interview

Backgrounds Unit

The Backgrounds Investigation Unit is responsible for completing pre-employment background investigations on all Sheriff's Office employees.

The Backgrounds Unit is comprised of sworn investigators who conduct the pre-employment background investigations and non-sworn support staff who assist the investigators.

The background investigation process can be quite lengthy. Investigators thoroughly check an applicant's history by conducting interviews, making home visits, and reviewing records from several sources. They also make contact with references, former employers, schools, and other law enforcement agencies. Every effort is put forth to thoroughly screen all qualified applicants and hire only those who meet the El Dorado County Sheriff's Office standards and P.O.S.T. job dimensions.

Upon successfully passing a background investigation, an applicant may be given a conditional job offer of employment based upon passing psychological and medical examinations. This part of the hiring process is not always required, depending upon the position applied for.

Personnel & Background Unit

Backgrounds completed by Support Services:	106
Employees hired:	47
Service Complaints Investigated:	14
Internal Affairs Investigations:	31
Accident Investigations:	34
Applications Processed:	1023
Retirements Processing:	13

Community Service Officers

There are currently six Community Service Officers working throughout the Sheriff's Office. Units they are assigned to include: Investigations, Patrol, Dispatch, Backgrounds/Personnel, and Coroner. They each assist in facilitating specific needs to the unit in which they are assigned. These duties may include administrative responsibilities, taking and writing reports from the public, transcribing interviews, coordination with outside agencies, working the front reception desk, doing research, maintaining vehicles for patrol, supervising inmate workers, processing pawn slips, and a variety of other essential tasks needed by the units they provide support for. Community Service Officers are a liaison between units and outside agencies, and play an important role within the Sheriff's Office.

Community Service Officer

	2013	2014
Initial Reports Written	1,143	958
Supplemental Reports	224	82

SUPPORT SERVICES DIVISION

Information Technology

Our Information Technology Unit is focused on law enforcement oriented computer systems. They maintain systems that capture and store thousands of crime reports, 911 calls for service and jail booking records. The storage of video is also a significant challenge. New technology is being evaluated to update patrol vehicles. Our primary goal is to reduce costs while keeping the right information at deputy's finger tips. The addition of the new website pio.edso.org blog has helped the Sheriff's Public Information Officers share vital information more rapidly with the public. Information Technology staff is made up of five Systems Analysts.

Vehicle Abatement

The vehicle abatement program is modeled after the State Statute authorizing Cities and Counties to adopt their own Ordinances to remove certain vehicles from public and private property. The City of Placerville, City of South Lake Tahoe and El Dorado Sheriff's Office have entered into a Joint Powers Authority, (JPA). This authorizes all of these agencies to be reimbursed by the State for their programs. A patrol deputy responds to citizen's complaints about vehicles possibly in violation of the County Ordinance. The deputy evaluates the vehicle and places a tag on the vehicles which are in violation. The registered owner of the tagged vehicle and/or the property owner are sent a letter advising them of the violation. Ten days after the letter is sent, if the vehicle in violation has not been addressed to comply with the County Ordinance it is subject to be removed. Our contract tow companies remove and dispose of the vehicles in accordance with State law.

There is an appeal process if an individual believes their vehicle is not in violation or they dispute ownership. This is a public hearing and the hearing officer makes a ruling based on evidence provided.

Vehicle Abatement

	Public	Private	Total
Voluntary abate	110	74	184
Towed	4	2	6
Total	114	76	190

SUPPORT SERVICES DIVISION

Coroner

Organization

The Coroner Division is an investigative unit responsible for carrying out the statutory duties of the Coroner. Those duties include investigation into the circumstances surrounding all deaths falling within the Coroner's jurisdiction for the purpose of determining the cause, manner, and time of death. Medicolegal death investigations are conducted county-wide on all homicides, suicides, accidents, suspicious, unattended and un-explained deaths. Other duties include establishing the identity of the decedent, notification of the next of kin, safeguarding personal property and completion of mandatory records.

Coroner Jurisdiction

The Division is also proactive in the community, participating in programs aimed at reducing youth drunk driving and drug use, identifying consumer products causing fatal injury, prevention of domestic violence, drug abuse and elder abuse, and providing education and training for medical, legal, and law enforcement professionals. The Coroner also joins in a cooperative relationship with non-profit organ and tissue procurement agencies.

The El Dorado County Sheriff/Coroner Office is mandated by the California Government Code § 27491 et seq. to determine the circumstances, manner, and cause of sudden or unexplained deaths in El Dorado County.

Coroner Statistics

Total Cases:	448
Initial Report Taken By:	
Coroner's Division	170
Patrol Division	278
By Type:	
Homicides*	5
Doctor's Case	191
Natural Causes	129
Accident	75
Suicide	35
Undetermined/Pending	13
SIDS	0

*The El Dorado County Coroner issues statistics on all reportable deaths, including homicides which occur on highways or within incorporated cities.

Training

The El Dorado County Sheriff's Office Training Division provided 6,947 hours of in house training for employees and 13,015 hours of outside training during 2014. Examples of in house training would be Defensive Tactics or Range Training. Examples of outside training received would be conferences and workshops hosted by other departments or organizations. The majority of the classes were POST mandated and certified programs for sworn staff and Continued Professional Training for corrections staff. In 2014 employees received 202 hours of online training.

SUPPORT SERVICES DIVISION

Civil

The Civil Section of the Sheriff's Office serves the public by processing and serving documents and civil court orders. Civilian staff processes and sworn staff serve court ordered evictions, wage garnishments, bank levies, real and personal property levies, restraining orders and other miscellaneous civil court paperwork.

Civil Activity

	2013	2014
Placerville		
Eviction Services	396	481
Levy Services	1,990	2,452
Misc. Services*	2,956	810
South Lake Tahoe		
Eviction Services	222	157
Levy Services	68	28
Misc. Services *	483	156

2014 Funds Generated

Placerville:	\$151,226.00
General Fund Revenue	\$79,095.00
Sheriff's Fund	\$72,131.00
South Lake Tahoe:	\$21,325.00
General Fund Revenue	\$14,065.00
Sheriff's Fund	\$7,260.00

*Misc services include, but are not limited to: warrants, domestic violence restraining orders, subpoenas, and other court documents.

SUPPORT SERVICES DIVISION

Records

The Records Unit processes reports from the records management systems, maintains detention files and manages the central warrants database for the county (except South Lake Tahoe Police Department). They maintain the restraining order system for the whole county, making the data entries into the state data-base. Records personnel take fingerprints and issue various permits such as concealed weapons permits. They register drug and sex offenders, handle correspondence requests for reports or calls for service, and background checks for authorized agencies. They also maintain crime statistics for the department and send monthly reports to the state.

There are ten Sheriff's Technicians, one Community Service Officer, one Senior Sheriff's Technician and one Records Supervisor that maintain the records section twenty-four hours, seven days a week. They perform a variety of complex technical and legal duties requiring them to examine documents for completeness, sufficiency, and conformity. They must be able to understand, interpret, apply, and explain relevant legal codes, laws, rules, regulations and procedures to do their work.

Property & Evidence

The Property Section is responsible for the receipt, tagging, storage, retrieval and release or disposal of evidence and property. It is responsible for ensuring the maintenance of records on all evidence and property including "maintaining chain of custody." Property personnel track the disposition of the case from receipt through the appeals process. Property personnel transport evidence between South Lake Tahoe and Placerville and the Department of Justice, dispose of hazardous waste, dispose of marijuana and other drugs and oversee the disposal of crime guns and ammunition. The Sheriff's Property personnel work closely with the District Attorney's Office and other agencies. Property is currently staffed with four people.

Records Statistics

680 New CCW Permits Issued
 108 New Sex, Arson, Drug Registrants Processed
 846 New Domestic Violence Restraining Orders Processed
 565 Other (harassment, work violence, criminal protective orders, etc.)
 2,482 Live Scan (Electronic fingerprinting)

	Evidence	
	2013	2014
Evidence Items taken in	9,242	11,485
Evidence items purged	8,511	11,918

SUPPORT SERVICES DIVISION

Communications

The Communications Division continues to enhance the radio system by adding repeaters for better coverage. The portable repeater system built last year was a great asset to the Sheriff's Office during the King Fire and Sand Fires. These repeaters allowed handheld coverage for all of the affected areas of the fires. The new repeater being placed at the Red Hawk Casino has been built and we are just awaiting the proper licensing to put it in place. This repeater will allow deputies to have handheld radio coverage while handling calls for service inside the casino itself. We are continuing to upgrade radio coverage for the west end of the County and hope to have two new repeaters installed in El Dorado Hills and Pilot Peak soon.

We have replaced the antiquated 911 consoles in Central Dispatch. This upgrade allows us to enhance the 911 system to include better mapping, caller ID functions and upgrade the functions related to recording and storing information.

Next we plan to replace the radio consoles in our Mobile Communication Van as well as upgrade our secondary frequency (F2) to work with both digital and analog systems.

In partnership with other agencies, we continue to support the Fire Service, Animal Control, Department of Transportation (DOT) and others in their communication needs.

Dispatch

Central Dispatch is an integral part of the Sheriff's Office team. Central continues to handle a high call volume of 72,178 calls for service this year up from 69,000 last year. Central also answered over a 100,000 non-emergency calls in 2014. Central's 12 year old 911 computerized phone system was replaced this year with the help of State funding. It provides enhanced call processing and GIS mapping capabilities. Also new this year is the replacement of the antiquated radio consoles. A new audio recording system provides enhanced features and more reliable storage. These systems will help make the vital infrastructure for 911 more dependable.

Call Totals

	2013	2014
Calls For Service	68,911	72,178

Most Common Calls For Service

	2013	2014
Traffic	7,316	9,659
Medical & Fire Assists	7,240	7,425
Alarm Activations	4,104	4,059
Follow-ups	3,824	4,126
911 hang-ups	2,796	3,272
Relay (to other agencies)	4,259	4,440
Suspicious Subjects	3,908	3,511
Suspicious Vehicles	2,894	2,227

Dispatch Staffing

15 Dispatchers
5 Senior Dispatchers (Trainers)
4 Supervisors

Staffing levels: from 3-6, depending on time of year, day of week, and time of day.

Alarms

The alarm permit ordinance and the Sheriff's administration of this program is essential to the reduction of false alarms and the saving of vital resources from responding to them. It is essential that department resources be used wisely. There were over 4000 alarm activations this past year with 99% being false. The alarm permit ordinance is being revised to help citizens reduce false alarms. It is vital that we educate citizens and hold abusers accountable for the tremendous costs associated with these false alarm activations. The Sheriff's Office is taking steps to streamline permit processing and tracking to reduce costs.

PATROL/INVESTIGATIONS DIVISION

- ♦ Patrol
- ♦ Reserves
- ♦ Field Training Officer (FTO)
- ♦ Ride Along Program
- ♦ K9
- ♦ Explosive Ordnance Disposal (EOD)
- ♦ Special Weapons and Tactics (SWAT)/Crisis Negotiation Team (CNT)
- ♦ Crisis Intervention Team (CIT)
- ♦ Gang Intel Detail
- ♦ Fleet
- ♦ School Resource Officer Program (SRO)
- ♦ Special Enforcement Detail (SED)
- ♦ Public Information Officer (PIO)
- ♦ Office of Emergency Services (OES)
- ♦ Boat Patrol
- ♦ Dive Team
- ♦ Search and Rescue (SAR)
- ♦ Off Highway Vehicle (OHV—Rubicon Patrol)
- ♦ Investigations
- ♦ Crimes Against Persons Unit
- ♦ 290 Registrant Enforcement
- ♦ Crimes Against Property Unit
- ♦ Financial Crimes Enforcement
- ♦ High Tech Crimes
- ♦ Narcotics
- ♦ Crimes Scene Investigations
- ♦ Crime & Intelligence Analysis Unit



PATROL/INVESTIGATIONS DIVISION

Patrol

The patrol section falls under the Operations Division of the El Dorado County Sheriff's Office. Due to the size and terrain of El Dorado County, the patrol section operates out of the main Sheriff's Office in Placerville and a substation located in South Lake Tahoe. The Placerville Office is responsible for patrolling the unincorporated area of El Dorado County from Strawberry to the El Dorado/Sacramento County line, and from Placer County to Amador County lines. The Lake Tahoe Substation patrol unit is responsible to patrol the unincorporated area of El Dorado County from Strawberry east to the Nevada state line and from the Placer County to Alpine County lines.

The Placerville Office is currently comprised of 68 Patrol Deputies, 10 Patrol Sergeants, 2 Lieutenants and 1 Operations Commander. The Lake Tahoe Substation has 13 Patrol Deputies, 1 Meeks Bay Resident Deputy, 4 Sergeants and 1 Lieutenant. All of the patrol section work 12 hour shifts with split times to ensure maximum coverage for the citizens of the County during peak business times. Many of the Patrol Deputies also have collateral assignments within the Operations Division. They include the following units:

- » S.W.A.T (Special Weapons and Tactics)
- » DIVE TEAM
- » BOAT PATROL
- » C.N.T. (Crisis Negotiation Team)
- » S.E.D. (Special Enforcement Detail)
- » S.A.R. (Search and Rescue)
- » E.O.D. (Explosives Ordnance Detail)
- » K9-CANINE UNIT
- » C.I.T. (Crisis Intervention Team)
- » F.T.O. (Field Training Officer)
- » O.H.V. (Off Highway Vehicles)

Reserves

The Sheriff's Office maintains a volunteer reserve deputy sheriff program.

Currently there are 6 unpaid reserve deputies that volunteer their time to both the community and Sheriff's Office by working in patrol or in other areas within the community. At this time we are in the process of hiring more unpaid reserve deputies which will increase our patrol staffing as well as our presence at community events with a minimal cost to the taxpayer. These reserve deputies will undergo an extensive field training program to ensure the citizens of the community get the level of service they are accustomed to from this volunteer force. A unique compliment to this program is the fact that the unit also consists of a tenured Reserve Deputy. He is the Senior Law Enforcement Chaplain who oversees the Chaplain program in El Dorado County. He also participates in the peer support program. The current reserve program has fluctuated between approximately six and ten unpaid reserve deputies between 2012 and the end of the 2014 year. Some reserve deputies have become full time employees of the El Dorado County Sheriff's Office. During 2014, the El Dorado County Sheriff's Office Reserve Deputy Program volunteered over 1,100 hours to the community.

Patrol Statistics		
	2013	2014
Reports Written	8,350	9,824
Supplemental Reports	3,577	4,318
Information Cases	562	393
Citations	2,365	3,040
Misdemeanor Arrests	1,431	1584
Felony Arrests	1,201	1339

These numbers include
South Lake Tahoe.

PATROL/INVESTIGATIONS DIVISION

Field Training Officer (FTO)

The Field Training Unit is responsible for providing training and documenting the performance of new Deputy Sheriff II's for the department. New hires may join our agency as experienced officers from another jurisdiction who typically require only training in policies and procedures of this agency and familiarization of the geography of El Dorado County. Academy graduates require training and experience in all aspects of law enforcement to include the full 880 hours on the training program.

Upon being hired, Deputy Sheriff II's complete a structured Field Training Program consisting of one week of orientation, one week of skills training and are then assigned to work directly with a Field Training Officer (FTO) for four training phases of five-weeks each. After 20 weeks of training with an FTO, the trainee's performance is evaluated for 2 weeks by an FTO who is just an observer in a phase called the shadow phase. The training program is performance based with the trainee being expected to handle more of the work in each phase. FTO's document the performance of their trainee's daily. The trainee receives this evaluation to help them understand areas they need to improve in or to notify them of acceptable performance. The goal of the Field Training Program is that upon completion of training, the new deputy performs at the level of a solo beat deputy.

Field Training Officers are selected to these positions from Patrol. To become an F.T.O., a deputy must be experienced, productive, a good communicator and show a desire and ability to teach. Upon being selected as an F.T.O., deputies are required to attend a 40-hour block of training by the California Police Officers Standard and Training (P.O.S.T.) to become a certified F.T.O. Among other topics, F.T.O.'s learn about adult learning concepts and how to properly evaluate a trainee's performance. The certification is good for three years, requiring a 24-hour update class every three years.

The Field Training Program currently has twelve fully trained Field Training Officers. During the year 2014 the F.T.O.'s trained sixteen Deputies.

Ride Along Program

The purpose of the El Dorado County Sheriff's Office ride-along program is to encourage community involvement in Law Enforcement. The ride-along program promotes a better understanding of the challenges, risk and rewards of the Deputy's role in the community.

Each year patrol deputies give ride-alongs to members of the Explorer Program, Chaplains, students in the Sheriff's Department Citizens Academy, Reserve Deputies, Deputy Applicants, students in ROTC programs and public citizens.

The program is overseen by the Patrol Services Lieutenant. Anyone wishing to request a ride-along may do so by obtaining an application from the Sheriff's Office front desk.

Ride Alongs 2014	
Explorers	14
School	5
Citizen's Academy	53
Public	147



PATROL/INVESTIGATIONS DIVISION

K9 Unit

The El Dorado County Sheriff's Office K9 unit was started in 1981 and has continued to evolve into the professional, well respected and most utilized specialty unit within the Sheriff's Office. The K9 Unit is comprised of four Patrol K9 teams which are assigned to the West Slope's Patrol Division and one Narcotics detection K9 which is assigned to the Narcotics Task Force. Each of the Patrol K9 teams is cross trained in patrol functions and narcotics detection. Specifically the K9 teams are trained in tracking, area searches, article searches, narcotics detection, suspect apprehension and handler protection. On a daily basis the K9 units assist patrol in responding to calls for service while also assisting the Narcotics Division, the Detective Division as well as the SWAT and SED Teams in various ways. The functions in which they assist these other units include extra security in high risk situations, the serving of arrest and search warrants, the detection and apprehension of suspects, locating narcotics and article searches.

In the realm of narcotics detection the K9 teams are trained to locate marijuana, methamphetamine, heroin, cocaine, opium and ecstasy. As indicated above the K9 teams assist in the apprehension of hundreds of wanted felony and on occasion misdemeanor suspects usually without the use of force. Often in these situations the mere presence of a K9 team deters the suspect from resisting law enforcement personnel or attempting to flee. The use of a K9 also minimizes a deputies exposure to possible injury when confronting suspects. Each K9 team is on call 24 hours a day. One of the K9 teams is assigned to work each of the shifts throughout the work week. In addition to the K9 team's daily functions they commonly conduct public demonstrations at various events and locations throughout the county. These include schools at all grade levels, the County Fair as well as a multitude of public and private events which they are invited to. These demonstrations give the Sheriff's Office and the K9 Unit an opportunity to interact with the community in a positive manner and allows the community to better understand who we are.

In return the K9 program is appreciated, receives much praise and is well supported by those whom we serve.

K9 Unit

Some Highlights

- 89 no-bite apprehensions
- 8 Bite apprehensions
- 4 Narcotics finds
- 18 Demo's/trainings given to local schools and community groups.

PATROL/INVESTIGATIONS DIVISION

Explosive Ordnance Disposal (EOD)

EOD's role could best be described as "hazard mitigation." EOD handles all manner of duties involving explosives from magazine inspections to found explosives - whether they are deteriorated blasting agents or improvised explosive devices. EOD trains to confront situations in various locations such as high angle and confined spaces. All personnel are trained to disable improvised explosive devices as well as deal with incendiary devices, weapons of mass destruction, and haz-mat situations.

Additionally, the EOD unit provides a service to other specialty units. The robot can be used to assist SWAT by remotely breaching, entering and clearing a building, forward observation, removing windows, vehicle disabling, and downed officer retrieval. EOD can assist SWAT with explosive breaching to rapidly access a structure, to create gun ports, or man-ways. The video feed from the robot can be recorded for documenting critical incidents, so there is no need to put additional personnel in harm's way. The robot can assist CNT by delivering throw phones, or negotiations can be carried on directly through the robot. EOD can assist detectives and CSI with investigations in this particular field of expertise including post-blast investigation.

Our EOD unit is a part of the Sacramento Area EOD Unit; this is a regional collective made up of local, state, and federal agencies with regular input from military and private sector resources. This communication keeps the unit, and thereby the department, up to date on current trends in terrorism, hazardous devices used, and technological advances. Additionally, it provides an immediate support network for additional resources and expertise. Much of EOD's equipment and training is federally subsidized. Grant funds are available to further the tools in our kit, and the unit is working towards bringing more useful technology to our department.

2014 continued the pace from the previous banner year. The EOD team averaged more than two calls per month.

EOD STATISTICS	
Explosion/Post Blast Investigations	1
Hoax Devices	1
Recovery/Found	14
Suspicious or Unattended Packages	3
Search Warrants	5
SWAT Robot Assist	3
Technical Assist (AOA)	1
Demonstration/Presentation	5
Event Stand-by	1
Total Calls	34



Explosive Ordnance Disposal (EOD) Continued

The most significant response call of 2014 started with a joint investigation between the FBI and the Bureau of Alcohol Tobacco and Firearms. The federal investigation revealed an elaborate Internet business that sold illegal firearms parts, home-made explosives, and biological toxins. During the course of the investigation, federal authorities discovered suspect cached explosives and a toxin in El Dorado County. The fact that a toxin and explosives were co-located made the incident a potential weapon of mass destruction (WMD). According to federal authorities, this was the first confirmed incident in which a potential WMD was located in the country.

The FBI reached out to us to coordinate the response and to lead the EOD portion of the operation. The FBI brought in teams from Virginia, Los Angeles and San Francisco. BATF also brought national and regional assets. Also present were USFS, CDF, Sacramento Hazmat, State OES, El Dorado Sheriff's Office OES, Sacramento Sheriff EOD, Sacramento Police EOD, and Yolo County EOD. When all of the stakeholders and resources were gathered, hundreds of first responders took part in an operation that lasted over 20 hours.

In addition to coordinating the response, El Dorado County EOD technicians were the first to interrogate examine the evidence. We were tasked with disassemble, identification, and separation of the evidence. Sacramento Police EOD relieved us after more than an hour in protective equipment and finished the disassembly. The FBI hazardous response unit along with the FBI crime scene team and BATF chemists cataloged, sampled and packaged the item found. After the investigation was complete, Sacramento County EOD was responsible for disposal of all items that were dangerous. The remaining items were counter charged.

When all was said and done, the cache did in fact contain toxin, homemade explosives and many laboratory grade chemicals that are precursors for homemade explosives.

The EOD unit investigated the attempted bombing of the El Dorado County Probation Office in Shingle

Springs. During the night, the suspects threw a pipe bomb at the front door of the Probation Office. The pipe bomb was intended to initiate with an improvised fuse but the fuse failed. The EOD unit responded and rendered the pipe bomb safe and then collected evidence to conduct an investigation.

The EOD unit also participated in several community events. Static displays were provided for National Night Out and Red Ribbon week. Citizens were invited to peruse the equipment the EOD unit uses. The events also offered an opportunity for people to ask questions of the technicians. The EOD unit provided a live demonstration for the Sheriff's Posse Picnic. A good time was had by all.

The newest member of the EOD unit attended Hazardous Devices School. The EOD unit continues to train on explosive forced entry with the SWAT team. All of the technicians on the team are now certified explosive breachers. We are hoping to expand our training with the SWAT team to include joint operations. One of the technicians is now an Institute of Criminal Investigation certified explosives/arson investigator.

PATROL/INVESTIGATIONS DIVISION

SWAT / CNT

The El Dorado County Sheriff's Office Special Weapons and Tactics Team (SWAT) and Crisis Negotiation Team (CNT) are committed to resolving difficult police situations using strategies and tactics that emphasize control, containment and resolution with the goal of protecting life and property. Both SWAT and CNT are committed to utilizing developed skills, tactics and specialized equipment and capabilities to resolve situations typically outside the realm of the ordinary patrol response. The members of the El Dorado County Sheriff's Office SWAT Team are committed to maintaining the highest levels of professionalism, service and training.

The El Dorado County Sheriff's SWAT team was founded in 1979; today the team consists of 12 Entry Team Members, 3 Sniper Team Members, 1 SWAT Canine, 2 Tactical Medics and Tactical Dispatchers.

The SWAT Team utilizes four vehicles: an equipment van, a deployment SUV, a Bearcat personnel rescue vehicle, and a pick up used for the Sniper Team. SWAT Team members train an average of 15 hours per month. Each member must pass strenuous firearms and physical fitness proficiency tests to remain on the team. SWAT Team partners with and trains alongside other allied regional agencies to share information and new trends in law enforcement in order to keep abreast of the latest and most proficient standards in the area.

In 2014 the El Dorado County SWAT Team had 9 callouts. These callouts included a high-risk search and arrest warrant for a convicted felon wanted for assault with a deadly weapon (firearm) and terrorist threats, a barricaded suspect wanted for assault with a deadly weapon (knife), a barricaded parolee at large, high-risk search warrant service as part of a state wide narcotics investigation, a barricaded suspect armed with a knife wanted for crimes of domestic violence, high-risk search warrant service on a suspected domestic terrorist, suspect search after a felony assault on a peace officer with a firearm and a high-risk search for a suspect wanted for the shootings of three law enforcement officers.

SWAT

Unit Size:

12 Entry

3 Sniper

2 Tactical

1 SWAT Canine



PATROL/INVESTIGATIONS DIVISION

Crisis Intervention Team (CIT)

The Crisis Intervention Team is the implementation of the concept that law enforcement can do better in dealing with the mentally ill, and that repetitive incarceration in the County Jail is non-productive, expensive, and does not serve either a wellness or a justice benefit.

The Crisis Intervention Team (CIT) consists of twenty-one deputy sheriffs and three patrol sergeants under the direction of a sheriff's lieutenant. The team is committed to a process of preventative policing in dealing with consumers of mental health services. Each CIT Deputy Sheriff receives 32 hours of advanced training in recognizing symptomology of mental illness and in dealing with mental health consumers. Additionally, another twenty members of the Sheriff's Office, including detectives, dispatchers, and office staff, have been trained in mental illness recognition, crisis intervention communications, and de-escalation techniques.

In late 2013 the Sheriff's Office was awarded an Untied States, Department of Justice, Bureau of Justice Assistance Grant for approximately \$200k for the purpose of expanding the work of the CIT program. CIT deputies, in addition to their regular patrol duties, specialize in responding to calls with a mental health component as well as following up with mental health consumers. The goals of EDSO's CIT program are to try to help eliminate the stigma surrounding mental illness in the community, to aide Sheriff's Office in contacts with persons suffering from mental illness with a connection to mental health services, and other allied agencies that work with this population; encouraging close communications resulting in a positive outcome for the mentally ill and law enforcement.

Through the Multi-Disciplinary Team CIT works closely with public agencies such as Mental Health, Adult Protective Services (APS), Probation, Public Defender's Office, District Attorney's Office, and the Public Guardian's Office as well as non-governmental organizations such as National Alliance for Mental Illness (NAMI) and Bi-Polar Insights to meet our goals. 2014 saw the creation of a multi-disciplinary team in the Tahoe Basin, organized by the Sheriff's Office that brings all these public agencies, including the local police to the same table.

Nationally, approximately 14% of all law enforcement

calls for service have a mental health component. El Dorado County falls right in line with the national average and in 2014 deputy sheriffs have prepared nearly 800 reports resulting from contacts with mental health consumers. CIT is proud of our work in making connections with consumers and their families. Our process is to follow up with consumers who have had contact with law enforcement to form a partnership committed to their health and well-being. As a trust based relationship is built calls for service related to mental illness have been driven down as are days spent in jail.

An example of a recent success in the CIT program involves a young man with a diagnosed psychotic condition. The consumer, in a psychotic break, attacked his brother with a weapon and was arrested. While in the custody of the Sheriff's Office the man took his medication, and jail staff found him to be a very likeable person. He quickly became an inmate worker and was successful in that role. In jail he met with CIT deputies who discussed his plans upon release. After spending two months in jail and on medications his charges were reduced and he was released from custody. Ten days later a pair of CIT deputies paid a visit on the young man and found that he was nearly out of his medications, was unable to read well enough to follow the written instructions he received about getting Medi-Cal and other benefits, nor had he succeeded in connecting with County Mental Health. The CIT deputies took him to Mental Health. There they connected him with both a clinician and a case worker. Additionally CIT deputies connected the young man with a local non-governmental organization that has funds to assist the mentally ill with medications. Finally on a later visit the young man told a CIT deputy that if he could show his former employer that he was not a felon he could have his old job back. The CIT deputy was able to get a letter from the District Attorney's office that allayed the employer's fears and the young man is back at work. It has been over a year since this young man saw the inside of a jail cell. This marks the longest period where he has not been arrested since he was 16 years old.

The ultimate goal of the CIT program is that mental health consumers are connected with services, and do not wind up interfacing with the criminal justice system, nor being incarcerated for behaviors that are symptomat-

PATROL/INVESTIGATIONS DIVISION

El Dorado Gang Enforcement Unit (EDGE)

The El Dorado Gang Enforcement Unit (EDGE) is a unit designed to combat illegal gang activity in El Dorado County. EDGE was established in 2004 and since then has had contact with individuals claiming membership in gangs that originated in Hispanic communities, Asian communities, outlaw motorcycle gangs and their support groups, white supremacy gangs, multiracial gangs and Sovereign Nation groups.

The EDGE unit is comprised of a Sergeant, six deputies, five of which work in the West Slope Office and one works in the South Lake Tahoe Office), two Correctional Officers, four Probation Officers and one District Attorney Investigator. California Highway Patrol also provides assistance.

The EDGE unit has three primary functions: intelligence, enforcement and education. Identification of gangs, their associates and members, criminal behavior and their patterns are the types of information that are used for intelligence gathering. The collection of this information is a necessity to officer safety and the safety of the citizens of this county. Although the enforcement and education components of the EDGE unit are significant to carrying out our function, intelligence gathering is continuous throughout all activities of the unit, which in the past has included assisting outside agencies with gang related activities in their areas.

The enforcement aspect of the EDGE unit includes problem focused enforcement assignments in areas where gang problems have occurred, or are about to occur. Probation, parole and post release community supervision searches are also done for enforcement as well as intelligence gathering.

Members of the EDGE unit conduct primary and follow-up investigations, serve search warrants, prepare and testify as expert witnesses during court proceedings.

PATROL/INVESTIGATIONS DIVISION

Fleet

El Dorado County Sheriff's Office has a wide variety of vehicles, each of which provides a valuable service to the Department. The usage of those vehicles range from standard patrol, to transportation units, to unmarked units to specialized vehicles such as the Bearcat, which is an armored SWAT vehicle.

In 2014, the sheriff's office fleet began its transition from the Ford Crown Victoria to the all new Ford Explorer Police Interceptor vehicle. This all-wheel drive SUV platform will be the primary patrol vehicle for the sheriff's office for years to come. As the older Crown Victoria's are taken out of service due to high mileage, they are being replaced by the newer SUV Explorers.

School Resource Officer (SRO) Program

El Dorado County has sixteen individual school districts with fifty nine schools. The Sheriff's Office serves most of those schools with a "School Resource Officer (SRO)" program. The SRO program is comprised of two full time deputies and one sergeant. The sergeant supervises the two SRO's as a collateral duty. The majority of the SRO workload is responding to daily requests for assistance from five high schools: Union Mine, Ponderosa, Oak Ridge, Independence, and Charter. SRO's also assist with the elementary and middle schools.

SRO's provide general law enforcement duties, security for sporting events and dances and educational presentations to faculty and parents throughout schools in the County. School resource deputies regularly attend monthly county wide school and law enforcement meetings where information and trends within the schools are discussed and shared. In addition SRO's assist the "School Attendance Review Board (S.A.R.B.)" and district expulsion hearings when needed. They also participate in and help proctor the annual "Every Fifteen Minutes" program that takes place at the local high schools to combat drunk driving.

Custody	18 vehicles, with 7 SUV's, 3 sedans and 8 vans.
Detectives	25 vehicles, with 12 SUV's, 9 Sedans, and 4 pick-ups.
Patrol	Placerville Patrol has 58, (55 on line—3 missing), marked/unmarked vehicles including K9. SLT Patrol has 10 marked/unmarked units. SWAT has a Bearcat, SUV, pickup and a converted ambulance. CSI has 1 converted ambulance. OES has 6 vehicles, boats & dive team has 3, SED has 3, SAR has 2, and Range has 1. Additionally STARS have 5 vehicles.
Support	Support Services has 9 vehicles, IT has 3, Radio has 2, Civil has 2, Property has 1 and Coroner has 3.

SRO PROGRAM

	2013	2014
Reports Written	304	227
Citations	184	224
Bookings	23	49

PATROL/INVESTIGATIONS DIVISION

Special Enforcement Detail (SED)

The compliment of the SED unit is four Deputy Sheriff's and a Sergeant. The primary function of this unit is to support Patrol with issues which cannot be typically handled on a day to day basis. SED assists other units in the department including but not limited to Detectives, Narcotics, SWAT, Gang Unit and various specialty events such as 4th of July festivals, etc. They also provide assistance to other outside agencies such as Code Enforcement and other law enforcement agencies.

The members of SED are selected by the Sheriff and are among the top performers in patrol. SED works a variety of hours and days, depending on the needs of the department. The needs may include intelligence gathering, conducting surveillance, probation, parole and Post Release Community Supervision searches, preparing and serving search warrants, developing and following through on cases where the suspect presents a serious risk to the community and tracking down those violent offenders to protect the citizens of El Dorado County.

The members of SED performed greatly this year by apprehending many high profile offenders, some of which were identified by SED and others via separate investigations. SED also handled neighborhood problems to ensure community safety by using a multi-faceted approach.

SED		
	2013	2014
Patrol Assists	216	246
Detective Assists	84	66
Citations Issued	45	122
Total Arrests:	202	266
Felony	131	117
Misdemeanor	71	149
Traffic Stops	89	244
Field Interviews	122	116
Warrants Served	133	173
Parole Searches	54	61
Probation Searches	188	198
Miscellaneous Details	384	201

PATROL/INVESTIGATIONS DIVISION

Public Information Officer (PIO)

Currently the Public Information Officers Unit consists of two collaterally assigned lieutenants and four collaterally assigned Sergeants. Tahoe has one patrol sergeant that handles PIO as a collateral duty and Placerville has three; One in Patrol, one in Transportation, and one in Corner's.

These public information officers serve as a liaison between the Sheriff's Office and the media. They write news releases, plan news conferences, and respond to inquiries from the media to include audio and video interviews. They often meet and escort reporters and photographers who come to the Sheriff's Office or other locations of news worthy events for interviews or photographs. Public information officers may be spokespersons, or they may serve as advisers to those who will appear on camera.

In addition to facilitating media stories, public information officers keep the public informed through direct communication. They assist in maintaining the Sheriff's website and develop informational releases. Public information officers may also work with agency staff to gather information requested by a reporter or citizen. They often represent the Sheriff's Office at public meetings, conferences and community events.

In 2014, there was a change in how the PIO's received and broadcast information. In the past, media personnel would call the press line and leave a voice mail message if no one was available. With our current system, the press line goes to a virtual mail box where the message can be answered by a person using their cell phone or the message can be converted into text. The assigned PIO can then return the phone call or send an email or respond by text. As to outgoing information, there is a new Sheriff's Office blog. When PIO's write and post press releases, they not only show-up on the Sheriff's Office web page but are also broadcast to television, radio, print, and social media outlets. Many of our press releases now show up on Facebook, Twitter and other eNews sources. The convenience of the new system has made PIO duties more efficient and more effective for our staff, the press,

and the public.

In 2014, PIO's prepared 143 press releases, a significant increase from 65 publishing's in 2013. The increase was due to two major wild land fires; 8 with the Sand Fire and 67 for the King Fire alone. During the King Fire, a PIO was assigned full-time to the Emergency Operations Center (EOC) which is part of the Office of Emergency Services (OES) and run by the Sheriff's Office. At the Fire Command Post at the El Dorado County Fair Grounds, a second full-time PIO was assigned to work in the Joint Information Center (JIC).

Other multiple press releases in 2014 were due to the Cascade Fire, a plane crash in Mosquito, and the El Dorado County Sheriff's Deputy who was shot in Camino.

PATROL/INVESTIGATIONS DIVISION

Office of Emergency Services (OES)

Mission Statement

The mission of the El Dorado County Office of Emergency Services is to train the people in El Dorado County to prepare for, respond to, and recover from emergencies that threaten life, property, or the environment.

Operational Area

In 1994, the Board of Supervisors designated the Sheriff's Office responsible for managing the County's Office of Emergency Services (OES). Sheriff's employees assigned to OES participate in various workshops, drills, table top exercises and full scale exercises to prepare and respond to disasters in El Dorado County. In addition to participating Law and Fire agencies, the Office of Emergency Services assists local utilities, schools, transportation and medical providers and various other volunteer organizations with disaster planning and response.

Emergency Operations Center (EOC)

The Office of Emergency Services is responsible for maintaining the readiness of the County Emergency Operations Center (EOC) in the event of local disasters. The EOC is a physical location where stakeholders in a disaster gather and share information as well as support first responders in disaster response and recovery. The EOC was fully activated twice this year for the Sand and King Fires. During the Sand Fire the EOC was staffed and operational for about 6 days and during the King Fire it was operational and staffed for 15 straight days. The EOC was activated several other times throughout the year for various disasters and events but these activations were on a much smaller scale.

The personnel assigned to OES also played a role in acquiring various state and federal grants which offset many of the costs associated with the King Fire.

In 2014 Raley's donated a portable water filtration unit to the Sheriff's OES. This equipment can rapidly filter water from a variety of sources and is powered by a generator. OES personnel received free training regarding the maintenance and operation of this equipment.

The personnel assigned to OES also maintain the "Reverse 9-11" emergency notification system including

the county's self-registration portal. The reverse 9-11 system was utilized numerous times this year most notably for evacuations during the historic wild land fires. This tool has proven invaluable and measures are being taken to implement improvements and additional services in 2015.

During the calendar year 2014, the Office of Emergency Services (OES) administered two multi-year Federal Homeland Security Grants (HSGP) covering more than twenty projects which distributed funds to local agencies including Health Services, Environmental Management, various Fire Districts and City Municipalities.

During the 2014 fiscal grant cycle year, the Office of Emergency Services participated in the following Emergency Management Performance Grant (EMPG) exercises:

- » 44 Meetings
- » 26 Workshops and Drills
- » 51 School and Workplace Safety Visits and Assessments
- » 41 Conference Calls

CERT

The El Dorado County Sheriff's Office oversees three Community Emergency Response Teams (CERT), which are located in Pollock Pines, Georgetown, and Rescue. Each CERT Team was activated this year for emergency responses. Of note all three teams assisted in the King Fire. Assisting with evacuations, road closures, logistical support, and animal care. The CERT volunteers also assisted in a variety of community events in their neighborhoods throughout the year.

The CERT volunteers complete a background investigation, an academy, and maintain their status through monthly meetings and trainings. There are approximately 60 active CERT volunteers in the County.

PATROL/INVESTIGATIONS DIVISION

Office of Emergency Services (OES)

Continued

School Safety

In 2014, the Sheriff's Office of Emergency Services conducted approximately 33 school safety meetings and 19 functional assessments at different school locations throughout El Dorado County to assist school administrators and staff with reviewing emergency plans and updating "Active Shooter" response procedures. These site visits included meetings, training sessions with staff, and lock-down exercises. Sheriff's OES has an open offer to all schools, both public and private, to provide free training, assessment, and support.



Work Place Violence Training

Throughout 2014, the Office of Emergency Services provided Work Place Violence and Prevention education and training to various departments and agencies in the county. In 2014 OES personnel conducted approximately 11 site visits to various departments and agencies. The OES office also works closely with the County's Risk Management Division to conduct field safety assessments of county facilities and infrastructure and provide input on future safety and security modifications and upgrades.



PATROL/INVESTIGATIONS DIVISION

Boat Patrol

Boating Safety and Enforcement Unit

The Boating Safety and Enforcement Unit of El Dorado County is in one of the most desirable areas in the region for waterborne recreation. The Boating Safety Unit is responsible for marine enforcement and rescue operations on all of El Dorado County's numerous waterways. This is accomplished by enforcement of County, State and Federal Boating Laws, vessel inspections and public education. There are dozens of lakes and waterways within the county, with eight being large enough to be used for recreational boaters and whitewater enthusiasts. The Boating Safety and Enforcement Unit staffed patrols on Folsom Lake, Jenkinson Lake, Union Valley Reservoir, Loon Lake, Echo Lake, Fallen Leaf Lake, Lake Tahoe, and the South Fork of the American River. Folsom Lake is bordered by three counties and a State Park and we share the law enforcement responsibilities on that lake with three other law enforcement entities. Lake Tahoe is bordered by two states which include five counties, six State Parks and a city.

Lake Tahoe also has an active U.S. Coast Guard station located on the North shore and we share law enforcement responsibilities on that lake with six other law enforcement entities. The Boating Unit is funded entirely from a California State Parks Department of Boating and Waterways grant and boat registration fees.

We are extremely fortunate to have a group of Deputies, both full-time and extra-help, that truly understand the importance of education and enforcement. Our Boat Patrol Deputies all have extensive law enforcement experience. The Unit is comprised of one full-time Sergeant, two seasonal full-time deputies and ten extra-help seasonal deputies.

There are five aluminum boats, a Rigid Hull Inflatable Boat, two personal watercraft, three whitewater rafts and two inflatable kayaks utilized by the Boating Safety and Enforcement Unit. This unit is extremely equipment-intensive with high maintenance demands. El Dorado County is unique in that we conduct a Whitewater Raft Patrol on a 20-mile stretch of the South Fork American River. This is one of only a few Whitewater Patrols operated by a Sheriff's Office in the nation. This patrol navi-

gates over Class III/IV rapids and has contact with over 150,000 rafters during the rafting season which runs from May to September.

Boating Contacts (May –Sept)

Enforcement Contacts	1,048
Registration & Other Warnings	189
Personal Flotation Device	388
Alcohol	1
Negligent /Reckless Operation	388
Citations/Arrests	71

Boating Safety Enforcement

Activities (May-Sept)

Boat Patrol on the water hours	3,725
Accident Investigations	6
Searches	4
Vessel Assisted	183
Boating Safety Presentations	3
Vessels Inspected	33
Organized Water Events	5
Drowned Body Recovery Attempts	2
Total Hours	7,739



PATROL/INVESTIGATIONS DIVISION

Dive Team

The Dive Team consists of nine Sheriff's Deputies and one Sergeant who have been selected because of their interest and abilities. Team members attend several dive related schools which instruct them on how to operate safely during water rescues and recovery utilizing the latest technology and the latest equipment. Rescue and Recovery operations occur in many different water environments which place extreme stress on Team members. Divers are called upon to operate in the many diverse water environments of not only El Dorado County, which include deep water recoveries in high country cold Sierra lakes, the surging waters of the Consumnes River and the South Fork of the American River, and Folsom Lake in Western El Dorado County. The Dive Team routinely responds throughout the State of California for mutual aid through the California Office of Emergency Services Law Enforcement Mutual Aid System.

In 2014 the Dive team had ten call outs, of which the most notable included the search for a plane in Folsom Lake that has been missing since 1965 with 3 victims on board, the rescue of three teenagers stranded on a rock near Lotus Park, the recovery of a drowning victim on the South Fork of the American River near Cronan Ranch, and an outside agency assist to Alpine County for a missing person search involving several dive operations.



Search and Rescue (SAR)

The El Dorado Sheriff's Office provides a wide range of search and rescue services to the residents and visitors of El Dorado County.

Mission Statement:

"We, the members of the El Dorado County Search and Rescue Team, in our mission to save lives and reduce human suffering, will provide the public with the most effective personnel and resource response to search, rescue, and disaster emergencies."

The El Dorado Sheriff's Office responded to at least 245 calls for service regarding lost and overdue subjects in 2014. Patrol deputies handled about 98 of these calls on their own. The remaining 147 calls for service required the efforts of trained SAR Deputies and their SAR volunteers.

Due to the geography and frequency of call-outs the SAR unit is divided into two teams. One team operates out of the South Lake Tahoe area and is known as the Tahoe Team. The other team operates out of the Placerville area and is known as the West-Slope Team.

The Tahoe team has approximately 35 active SAR volunteers. They are coordinated by one full-time SAR/OES sheriff's deputy and two collateral sheriff's deputies. In 2014 they responded to approximately 100 SAR missions; to include several mutual aid call-outs for other counties in California and Nevada. Of those 100 missions 28 of them were handled by a SAR deputy alone, whereas the remaining 72 missions required the assistance of Tahoe SAR volunteers.

The Tahoe team stays busy with a robust variety of year-round alpine recreational activities. The Tahoe team specializes in Nordic, ground search, and high-angle rope rescues.



SAR Volunteers being transported by Blackhawk Helicopter during a SAR Mission - 2014

Search and Rescue (SAR) Continued

The West-Slope team has approximately 160 active SAR volunteers. They are coordinated by two full-time OES/SAR sheriff's deputies and six collateral sheriff's deputies. In 2014 they responded to approximately 47 SAR missions; to include several mutual aid call-outs for other counties in California and Nevada. Of those 47 missions 27 of them were handled by the SAR deputies alone, whereas the remaining 20 missions required the assistance of West-Slope SAR volunteers.

The West-Slope team stays busy with its vast varying terrain from alpine to near sea-level elevations as well as several popular waterways including the American and Cosumnes Rivers. The West-Slope team has several specialized units which include: mounted, canine, OHV, technical rope rescue, swift water recovery, management, and ground searchers.

2014 proved to be a busy year for El Dorado County. In June we launched the largest search-and-rescue campaign in our county's history for Cody Matthews. Nearly 500 personnel searched for Mr. Matthews over 8 consecutive days. All of the searchers were trained SAR volunteers. These volunteers came from all-over northern California and Nevada. In all 17 different counties joined our search efforts. Helicopters, canines, OHV's (including Jeeps, Motorcycles, and UTVs), mounted equestrian searchers, swift water and dive teams, technical rope rescue teams, and ground searchers all donated their time and effort to search the rugged terrain. Unfortunately Mr. Matthews was not located and has yet to be found. The investigation is ongoing.

Additionally our county experienced a devastating year for wildfires to include the infamous Sand and King Fires. The King Fire was the region's largest recorded wildfire. Over 100 SAR volunteers donated several thousand hours assisting deputies with evacuations, manning phone banks, and caring for evacuated animals. One volunteer alone donated over 120 hours caring for animals and providing other services.

Other examples of typical search and rescue missions include:

- ◆ Lost/Injured skiers, both at resorts and back-

country.

- ◆ Wilderness/Remote plane crashes.
- ◆ Lost/Injured hikers.
- ◆ Stranded/Injured recreational climbers and high-angle rope enthusiasts.
- ◆ River rescues.
- ◆ Lost children both in neighborhood and wilderness settings.
- ◆ Dementia and Alzheimer's walk-aways.

All search and rescue volunteers must be certified in first aid and CPR. They must complete a background check, pass an interview, complete a field training program, and complete a series of bi-annual SAR classes. These classes include: critical incident stress, air craft safety, land navigation with GPS, map and compass proficiency, crime scene preservation, radio procedures, search theory, and wilderness survival. Additionally, volunteers attend monthly meetings and trainings as well as twice annual full-scale training exercises.

The average volunteer commits approximately 10-20 hours of service to this county each month. This does not include search call-outs which can sometimes last for several days. This equates to over 35,000 volunteer hours donated in the name of serving the citizens of El Dorado County each year.

Our mission of saving lives is accomplished through the support of volunteers and sheriff's deputies. Although the sheriff's office personnel coordinate the unit, without the use of these highly trained volunteers, an effective SAR team would not be possible



PATROL/INVESTIGATIONS DIVISION

OHV Rubicon Patrol

The El Dorado County Sheriff's Office OHV Unit saw an increase in users of the trail in 2014. 4,199 vehicles and 8,879 persons were contacted during the high time of the season which runs roughly from Memorial Weekend through Labor Day. During the season, the deputies assigned to this detail are present when groups of 50 to 500 participate in organized runs just about every weekend. 140 warnings were given to trail users for safety concerns such as no helmets, seat belts, unsafe riding or driving. There was one citation issued and one arrest for public intoxication. The deputies had several major incidents occur on the trail this year. The incidents ranged from forest fires, missing persons, vehicle rollovers and a helicopter crash. The El Dorado County Sheriff's Office received a donation of a new 2015 Jeep Rubicon from the Jeep / Chrysler Corporation. The Mark A. Smith Edition is the only one in the world and will no doubt be the showcase vehicle patrolling the trail for years to come.



PATROL/INVESTIGATIONS DIVISION

Investigations

The Investigations Unit of the El Dorado County Sheriff's Office is comprised of 13 full-time detectives, one sergeant, one lieutenant, one community service officer, and one crime and intelligence analyst. These detectives are highly trained to handle all major felonies occurring within the County. The Investigations Unit consists of detectives assigned to investigate all crimes against persons as well as property crimes.

2014 brought change to the Investigations Unit with one detective transferring to patrol and one detective promoting to the rank of sergeant and rotating back to patrol. Two deputies were promoted to detective and were brought into the unit. Movement occurred within the Investigations Unit with two detectives moving into the homicide detail and one detective moving into the missing persons/290 PC detail.

Investigations Unit

Facts for 2014

- * **3158** Cases were Assigned
- * **1,177** Interviews were conducted
- * **6,118** Suspect/Witnesses were contacted
- * **1058** Cases were cleared

in the unincorporated area of Placerville.

In August, two patrol deputies responded to a report of a suicidal subject in Pollock Pines. Upon making contact, the subject armed himself with a knife. The deputies deployed a Taser on the subject. The subject was unaffected by the Taser and stabbed himself in the heart, later dying as a result.

Also in August, a male subject shot his live in girlfriend in the head. The subject then sat next to the victim and turned the gun on himself, committing suicide. This occurred in the unincorporated area of Placerville.

In October, a patrol deputy was involved in an officer involved shooting. The patrol deputy checked on a suspicious vehicle in the Camino area, finding a subject nearby. The subject charged at the deputy and they both fell. A struggle over the deputies firearm ensued during which one round was fired that struck the deputies portable radio on his hip. The suspect returned to his vehicle and retrieved a firearm and fired at the deputy with the deputy firing at the suspect. The suspect drove away and has not been located. This case is currently being investigated.

Three in custody deaths were investigated. The first occurred in March, at the South Lake Tahoe facility. An inmate used a bed sheet to hang himself. Another occurred in July, at the Placerville facility. The inmate died of natural causes.

Crimes Against People Unit

The crimes against persons unit consists of seven detectives. Four of these detectives receive additional training in death investigation. They handle all homicide investigations, officer involved shootings, cold case homicides, suicides involving firearms and all other unexplained and suspicious deaths. Additionally, these four detectives investigate robberies and all other violent assaults.

In March, a female subject shot her partner in the head. The subject then set the residence on fire before turning the gun on herself and committing suicide. This occurred

PATROL/INVESTIGATIONS DIVISION

290 Registrant Enforcement

Managing the number of sex registrants in El Dorado County jurisdiction has proven to be a tedious and time consuming task. The Sheriff's Department has one detective assigned to this active caseload which has proven to benefit the community. The assigned detective registers all of the sex registrants by conducting one on one status update interviews. Many sex registrants have to update their information on an annual basis and any time information changes, such as they move and/or were incarcerated. All sex registrants who are transient are required to update their information no less than every thirty days. During these interviews, the sex registrant is checked for warrants, protection orders, updated criminal history, firearms and vehicles registered to them. If action is warranted based upon these records checks and/or the sex registrant is determined to be out of compliance with his or her sex registration requirements, action is taken immediately. Our agency works closely with parole, probation and district attorney investigators in effort to ensure the sex registrants are properly accounted for and compliance checks are conducted.

290 Registrant Facts

	2013	2014
Total Registrants	300	327
Non-Compliance Violations	12	12

PATROL/INVESTIGATIONS DIVISION

Financial Crimes Enforcement/Elder Abuse

2014 was the first full year where a single Detective was assigned all financial and elder abuse cases. This allows close working relationships to be built between the Sheriff's Office and Adult Protective Services as well as other county agencies as they work together to protect El Dorado County's aging population. This Detective now reviews all reports of suspected elder abuse made to Adult Protective Services. In 2012, 94 cases of Elder Abuse were reported, in 2013, 203 cases were reported and in 2014, 237 cases were reported.

This Detective also conducts all investigations of counterfeiting, forgery, identity theft, embezzlement and many types of fraud cases. Identity Theft and fraud are becoming increasingly common and this Detective's case load has increased each year, with 2014 being no different. These crimes are unique in the fact that the victims reside in El Dorado County, however, the theft can occur anywhere in the world. These complex investigations require coordination with outside jurisdictions to assist in locating the suspects. Below are a few ways in which this Detective has endeavored to prevent our citizens from becoming victims.

In 2014 the Financial Crimes Detective investigated a Mortgage Fraud / Embezzlement case where a property manager stole \$19,473 from 15 separate property owners in El Dorado and Sacramento Counties. In this expansive investigation, it was uncovered that the property manager had been spending tenant's cash deposits on everything from dining to manicures. The property manager operated as a Ponzi Scheme, using the deposits of the new tenants to cover the deposits she had already embezzled, until the money ran out and the crime was uncovered.

Also in 2014, an investigation of a member of a local church organization revealed that this member who was new to the area stole \$60,738 from several other members and was being charged with Elder Abuse, Identity Theft, and Insurance Fraud. This person had taken advantage of the trust of this kindhearted community and fled from the area. This subject was arrested on our arrest warrant before he had the opportunity to take

advantage of any other unsuspecting citizens.

In an effort to help prevent fraud and scams; in 2014 six meetings were held with various senior communities to help educate those who are most often targeted. By reviewing common scams, a trend was discovered where prepaid cards were frequently being used by victims as a way to send money to the perpetrators who are often out of the US. To help prevent scams targeting the elderly, this Detective hand delivered flyers to the managers of the 20 most frequented retailers to educate their employees of these trends in hopes they may intervene when they suspect their customer may be obtaining funds as part of a scam.

	2012	2013	2014
Elder Abuse Cases Reported	94	203	237

PATROL/INVESTIGATIONS DIVISION

Crimes Against Property Unit

The crimes against property unit has four detectives that investigate all thefts and Burglaries on the west slope of El Dorado County and one investigator assigned to South Lake Tahoe. Property crimes continue to be a significant amount of all crime reported and requires the use of multiple strategies to investigate. Community assistance plays an important role in solving property crimes.

In late 2013 El Dorado County was experiencing a large number of residential burglaries which continued into 2014 when the suspect was released from jail. The burglaries had several common factors such as occurring during daytime hours and forced entry normally by kicking open a door. Most of the burglaries had similar items taken such as large amounts of jewelry, guns, coins/money, tools and high end electronics.

While conducting the multiple investigations detectives were able to identify a possible suspect vehicle. While travelling around Placerville, the possible suspect vehicle was sighted by detectives and followed to a residence. Once at the residence multiple subjects were contacted and during the investigation at least five subjects were identified as being responsible for the burglaries. Detectives obtained arrest warrants for all outstanding subjects. One of the subjects arrested was suspected to be the ring leader of the group. The subject was able to post bail while awaiting court proceedings.

After the subject was released from jail, El Dorado County again began experiencing a large number of residential burglaries similar to those described above. With the help of video surveillance detectives were able to identify a vehicle that was used during the commission of one of the burglaries. A warrant to track the vehicles location was obtained. This helped to identify that the same subject was responsible for several more residential burglaries.

He was later arrested after a short vehicle and foot pursuit. During the arrest several items connecting him to the burglaries were located. He is currently in El Dorado County Jail awaiting trial.

During the investigations multiple search warrants were

obtained and aided in the recovery of upwards of \$100,000 dollars of stolen property. Detectives believe this group of burglars is responsible for approximately 75 residential burglaries in total.

In May, 2014 EDSO patrol deputies documented an incident of theft from a mailbox in the Placerville area. Two bank checks were stolen, altered, and later passed by unidentified suspect(s) in commercial businesses around the Georgetown and Cool communities. Upon reviewing surveillance footage from one of the locations, the investigating detective recognized the suspect from a prior investigation originating in December, 2013. In that investigation, the suspect was arrested and later released on bail after being found in possession of tens of thousands of dollars' worth of stolen property from numerous residential burglaries to include numerous firearms. Based upon the information, a search warrant was drafted and granted for the suspect's Georgetown residence and an arrest warrant was granted for the suspect.

In the subsequent search of the residence, numerous items were discovered to include three firearms (one confirmed stolen), ammunition, and narcotics. In addition, an illegal marijuana cultivation operation was discovered on the premises and a clandestine BHO (Butane Hash Oil) extraction lab was identified and seized. As a result of the investigation the primary suspect was arrested and sentenced to several years state prison and charges are pending for two additional conspirators for the illegal possession and manufacture of controlled substances.

In May of 2014 numerous vehicle burglaries were occurring throughout El Dorado County. The burglaries involved both locked and unlocked vehicles. The burglars mainly targeted wallets/purses containing personal information and credit cards.

PATROL/INVESTIGATIONS DIVISION

Crimes Against Property Unit Continued

In late May detectives received a call from a nearby law enforcement agency that had arrested a subject for numerous charges. During their investigation it was determined the subject was involved in numerous vehicle burglaries in El Dorado County.

Detectives interviewed the subject who admitted his involvement in at least 15 vehicle burglaries as well as identifying his co-conspirator. It was also determined the co-conspirator was the leader and he was frequently stealing identifying information from victims after breaking into their vehicles. The subject was making fraudulent charges with stolen information obtained during the burglaries.

After another vehicle burglary was reported in the Cameron Park area, it was determined the same subject had again broke into additional vehicles. The subject stole multiple victims' identities. One of the victims reported the subject had stolen tens of thousands of dollars including buying a vehicle under their identity.

Detectives served a search warrant on the suspect's residence in Sacramento and located several items of stolen property. Of the property recovered, detectives were able to identify at least 40 victims of theft of their personal property and identities in El Dorado County and surrounding counties of Placer and Sacramento. In the recovered property was evidence linking the subject to the fraudulent purchase of the vehicle.

While detectives were conducting their investigation, Placer County experienced numerous vehicle burglaries. One of the vehicle burglaries captured surveillance images of the suspect. With familiarity of the subject El Dorado County detectives were able to contact detectives in Placer County and identify the subject in their case.

The subject is awaiting trial in multiple counties.

PATROL/INVESTIGATIONS DIVISION

High Tech Crimes

The High-Technology (High-Tech) Investigations Unit consists of one full-time investigator and one part-time investigator. This Unit supports not only the Investigative Division but the entire County in several aspects, including but not limited to, in-depth forensic analysis of computers, cellular telephones, surveillance systems, still and video cameras, the defeat of passwords or encrypted files and tracking of internet related crimes across the World Wide Web. Many of these analyzed devices have become crucial evidence in high-profile investigations such as homicides, child molestation, kidnappings, suicides, identity theft, burglaries, large scale fraud and narcotics. The High-Tech investigators also assist with in-progress investigations, leading to the identity of suspects, preservation of evidence or providing real time information. With the rapidly increasing trend of our modern electronically dependent society, the High-Tech Investigations Unit has seen an exponential increase of computer devices having to be forensically examined.

The High-Tech Investigators are known for expert testimony in court and provide, in an age of Crime Scene Investigations shows and enthusiasts, tangible evidence that speaks directly to the conduct of those on trial. The High-Tech investigators from the El Dorado County Sheriff's Office are the only such trained investigators (working in Law-enforcement) in this County. The unit assists outside agencies such as the South Lake Tahoe Police Department, Placerville Police Department, the California Highway Patrol, United States Forestry Service, Bureau of Land Management and County Fire Agencies with numerous High-Tech related investigations.

The High-Tech Investigations Unit benefits from a working relationship and incorporation with the Sacramento Valley High-Tech Crimes Task Force and the Internet Crimes Against Children (ICAC) Task Force. These Task Forces work with the Federal Bureau of Investigations (FBI) and are subsequently supplemented with equipment, training, and abundant resources.

As members, the department and investigators receive

critical funding, skilled and highly sought-after training, collaborative assistance from other investigators, and specialized equipment.

Task Force Participation

(These include Hi-Tech Crime, Identity Theft, and Internet Crimes Against Children (ICAC) Investiga-

	2014
Investigations	171
Internet Crimes Against Children Investigations	36

PATROL/INVESTIGATIONS DIVISION

Narcotics

WENET

During the year 2014 the Western Slope El Dorado Narcotics Enforcement Team (WENET) received funding of approximately \$80,000 for the enforcement of narcotic laws from the Drug Enforcement Administration's (DEA) Domestic Cannabis Eradication/Suppression Program (DCE/SP), \$25,000 from the United States Forest Service (USFS), \$25,000 from the United States Department of Justice (USDOJ) Organized Crime Drug Enforcement Task Force (OCDETF) and \$266,000 from (CalMMET/CAL E-M-A). A majority of the above listed funds are utilized for the cost of Narcotic Investigators wages and overtime.

As feared by US Narco investigators the Russian drug Desomorphine (street name Krok or Krokodil) has reached the US and is now in El Dorado County. WENET Detectives have contacted a resident of El Dorado County who is actively using Krokodil that was purchased in Sacramento. WENET is working diligently to find the source and supply of this flesh eating drug as users have a life expectancy of 2 years. Some of the ingredients of this drug are paint thinner and gasoline to name a few. Many Heroin users are unknowingly being duped into purchasing Krokodil as it is similar to Heroin. Krok, the "Zombi Drug" is highly addictive and is not to be taken lightly. Should anyone attempt to view the effects of this narcotic on the internet, viewer discretion is strongly advised.

A new addition to the team this year is an Analyst with the California National Guard Counter Drug Task Force. Our new partnership has enhanced the WENET Team and its capabilities.

Members of the Sheriff's Office Patrol Division are adequately trained and equipped to conduct overt investigations, such as parole and probation searches for the purpose of enforcing controlled substance laws.

With this in mind, the primary duty of detectives within WENET is to follow up on information received that requires covert undercover operations, and investigation. WENET detectives' second priority is to locate and cultivate confidential sources that can supply information

that will be utilized to initiate investigations that require covert undercover operations. During 2014, five W.E.N.E.T. detectives conducted more than 2500 hours of surveillance.

WENET detectives' third priority is to conduct those overt investigations, which can also be conducted by other units within the Sheriff's Office, such as knock and talks, probation searches and parole searches. Narcotics detectives must be proactive and have the initiative and motivation to seek out and develop their own sources of information and investigations. If they are having difficulty cultivating undercover operations and confidential sources of information, they must execute overt investigations, not only for the purpose of arresting violators of controlled substance laws but also as a method of developing confidential informants for the purpose of initiating covert investigations.

WENET detectives are expected to be capable of conducting any type of investigation and are expected to initiate cases in all areas of covert investigations and are not limited to controlled substance investigations. During 2014 the W.E.N.E.T. detectives not only investigated the illicit manufacture, cultivation and distribution of controlled substances they also assisted in locating, tracking and apprehending felony fugitives, pedophiles, human trafficking victims and suspects, burglary suspects, homicide suspects, and stolen property.



PATROL/INVESTIGATIONS DIVISION

Narcotics Continued

WENET

WENET EFFORTS

- Served 90 search warrants
- Completed 506 reports
- 185 Felony arrests
- 16 misdemeanor arrests
- 100 undercover buys / covert operations

These resulted in..

- 59,184 marijuana plants eradicated
- 5,204 pounds of processed marijuana
(with a street value exceeding 70 million dollars)

- 12lbs methamphetamine
(with a street value exceeding \$120,00)

- 2.5 kilos of Cocaine
- 2lbs of Heroin
- 4lbs of Ephedrine
- 150 LSD tabs and/or synthetics
- 541 Rx controlled pills
- 456 Milly/MDMA pills

- 3,103,175.64 in US currency
- More than 20 properties seized/and or vehicles
- 146 Weapons seized



PATROL/INVESTIGATIONS DIVISION

Narcotics

SLEDNET

The South Lake El Dorado Narcotics Enforcement Team (SLEDNET) is supervised by one EDSO Sergeant acting as the Task Force Commander. SLEDNET is comprised of one EDSO Detective, two South Lake Tahoe Police Department Detectives, one El Dorado County District Attorney Investigator, and one El Dorado County Probation Department Officer for 2014.

SLEDNET's primary purpose is to enforce the laws pertaining to the trafficking of illegal narcotics within the South Lake Tahoe portion of El Dorado County. SLEDNET also assists with all serious felony crimes requiring specialized investigative techniques such as covert surveillance, informant development, and undercover operations. SLEDNET actively assists allied agencies with complex investigations including DEA, US Postal Inspector, Homeland Security, HIDTA, and the FBI. SLEDNET regularly assists allied narcotic enforcement teams with investigations to ensure criminal information is gathered and shared efficiently.

2014 was the first year SLEDNET operated with the assistance of a narcotic detecting K9. SLEDNET's K9, Odin assisted Detectives with numerous investigations and searches during the past year. Odin proved to be a substantial asset to SLEDNET, and our allied agencies because of his ability to expedite large scale searches and accurately detect narcotics during vehicle stops.

2014 was a very busy year for SLEDNET Detectives who completed 100 investigations and served 65 search warrants. SLEDNET Detectives made 63 felony arrests, and seized 15 firearms. Detectives eradicated 3,508 marijuana plants, and seized 696 pounds of processed marijuana with a street value of approximately \$3,000,000. SLEDNET Detectives seized over 200 ecstasy pills, 9 pounds of methamphetamine, and 7.3 ounces of heroin. Detectives seized approximately \$90,000 in US currency during various investigations in an ongoing effort to utilize asset forfeiture as an additional means to disrupt narcotic trafficking.

SLEDNET maintains an ongoing working relationship with El Dorado County Child Protective Services. CPS re-

sponded to several SLEDNET search warrant services during 2014 to conduct joint investigations regarding the welfare of drug endangered children. One child was placed into protective custody by CPS during a 2014 SLEDNET investigation.

SLEDNET significantly increased enforcement of indoor marijuana cultivation during 2014. In response to ongoing community complaints about indoor marijuana growing within residential neighborhoods, SLEDNET aggressively investigated and arrested many individuals operating outside the scope of California Proposition 215. SLEDNET partnered with Building Inspectors and Fire Marshalls during these investigations to disconnect illegal and poor electrical wiring to also ensure the safety of the community through fire prevention.

SLEDNET

- » **100 Investigations**
- » **63 Arrests**
- » **65 Search Warrants**

These Resulted in seizure of.....

- » 3,508 Marijuana plants
- » 696lbs of processed marijuana
- » 213.7 gg of concentrated cannabis
- » 200 Ecstasy pills
- » 6 vials of Steroids
- » 9lbs of Methamphetamine
- » 7.3 oz Heroin
- » 90,000 US currency
- » 15 firearms



PATROL/INVESTIGATIONS DIVISION

Crime Scene Investigations (CSI)

As violent crime began to increase during the late 1980's and into the early 1990's, it became apparent that the Sheriff's Office had to develop its own Crime Scene Investigative unit to keep up with the demands and stay abreast of new and developing forensic procedures.

Today, the El Dorado County Sheriff's Crime Scene Investigative unit (CSI) is comprised of 12 sworn Deputy Sheriffs. The CSI positions are a volunteer collateral assignment and all assigned to this unit are from the patrol division. All members are trained by the standards set by the Department of Justice, (DOJ). This training includes basic and advanced crime scene investigations techniques as well as monthly training specific to the needs of our CSI unit.

CSI personnel are responsible for evaluating and processing complex crime scenes using various types of equipment. Examples of such crime scenes are homicides, officer involved shootings, sexual assaults, armed robberies, home invasions and property crimes, such as burglaries. The CSI investigators work closely with detectives, especially the homicide unit. Evidence that is located is then secured and packaged. In many cases the evidence is then transported to the Department of Justice for further analysis and testing.

The CSI unit is also responsible for establishing a permanent record and describing the crime scene by writing detailed reports, producing diagrams and using professional photographic techniques. They must also testify in court as expert witnesses.

The El Dorado County Sheriff's CSI unit responds to all major crime scenes 24 hours a day. Their arsenal of equipment is carried by a donated used ambulance that has been outfitted to fit their needs. This CSI van carries many items of equipment and chemicals needed to process any scene.

The Sheriff's CSI unit is a proud group of individuals that have worked on all of the major incidents within the county for the past 20 years. Their efforts and expertise have assisted detectives in the successful prosecution of numerous cases over the years. 2014 was a busy year for the CSI unit in providing training to new members while responding to several CSI calls. We look forward to their accomplishments in the coming years.

Crime and Intelligent Analysis Unit

The Sheriff's Office has one Crime & Intelligent Analyst. Although the analyst is assigned to the Investigative division, support is provided to all areas of the Sheriff's Office as well as the public. Crime analysis is a systematic and analytical process of "who is doing what to whom." Intelligence analysis is the process of analyzing "Who is doing what with whom," and is used to assist units such as Narcotics and Gangs.

Both processes include reviewing large volumes of information collected by deputies and investigators from witnesses, victims, confidential informants and suspects.

The Analyst provides weekly reports to both Detectives and Patrol Officers. These reports help them see the "overall" crime picture.

The Analyst also works closely with a network of other department analysts. This allows a full view of the surrounding counties and collaboration when a suspect crosses county lines to commit crimes.

- ♦ **Custody Services**
- ♦ **Alternative Sentencing & Work Program**
- ♦ **Transportation**
- ♦ **Custody Gang Unit**
- ♦ **Court Security & Bailiffs**

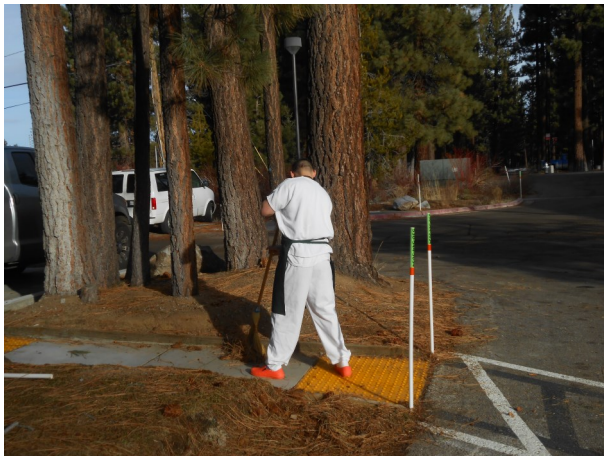
CUSTODY DIVISION

Custody Services

The Custody Division's mission is to ensure public safety through the safe and secure incarceration of inmates. The mission is achieved through adherence to employee performance standards, accountability and teamwork. The Custody Division staffed by Correctional Officers is committed to creating a structured environment to facilitate the inmate's assimilation back into their communities, as well as providing the opportunity for self-improvement through programs and services.

The Placerville and South Lake Tahoe Detention Facilities operate under the authority of the Corrections Standards Authority, as set forth in Title 15 of the California Code of Regulation and Section 6030 of the Penal Code. Both facilities receive male and female inmates that are arrested by local, state and federal law enforcement agencies and committed to custody by the courts. Each jail serves as the main booking facility for its particular geographical area.

The Placerville and South Lake Tahoe County jails are Type II facilities and may house both pre-sentenced and post-sentenced male and female defendants. Placerville has a State Board of Corrections rated capacity of 311 beds. South Lake Tahoe jail has a rated capacity of 158.



Bookings/Release

by Facility

	Placerville		Tahoe	
	2013	2014	2013	2014
Bookings	4877	4829	2055	1940
Releases				
Bail (bond & cash)	1852	1640	704	826
O.R.	55	70	124	123
Time Served	835	923	392	267
Cite	653	675	175	152
Charges dropped	271	155	258	96
Trans St prison	139	129	0	0
ICE	81	1	0	0

*General Facility Totals

(includes both Placerville & Tahoe)

	2013	2014
Visitors Processed	25,660	25,799
Meals Prepared	444,905	461,268
Staff Totals	102	116



CUSTODY DIVISION

Custody Services Continued

Medical		
(Includes both Placerville and Tahoe)		
	2013	2014
Medications administered	320,189	317,156
Sick calls	6,098	6,534
Physician sick call	2,016	2,059
Dental visits	329	401
Emergency room visits	71	87
Hospital days	89	60
Psychiatric contacts	856	849
Infirmity days	365	365
Suicide attempts *	4	21

* Medical reports only "major" suicide attempts.

Written Reports by Incident Type

By Facility

	Placerville		Tahoe	
	2013	2014	2013	2014
Info Only	1,631	1,811	667	691
SOB Cell	218	128	51	19
Contraband	65	69	32	30
Major	311	409	198	205
Minor	355	528	343	242
Safety Cell	85	69	45	47
Suicide Attempt*	18	21	5	17
Use of Force	117	156	81	159

* Included are all suicide attempts, regardless of how minor.

CUSTODY DIVISION

Alternative Sentencing / Work Program

In an effort to defer the increasing cost of housing inmates, the El Dorado County Sheriff's Office offers two options to incarceration.

Sheriff's Work Program

The Sheriff's Work Program operates in accordance with section 4024.2 of the California Penal Code and under the authority of the El Dorado County Board of Supervisors pursuant to resolution. The program is administered by the Sheriff's Custody Division and is designed to afford low risk offenders the opportunity to satisfy their court sentence without incarceration through work assignments at various sites approved by the Sheriff. Approval to participate in the program is at the discretion of the Sheriff. The court may restrict or deny eligibility.

Jail Weekender Program

This program is for sentenced inmates who are allowed by court order to serve weekends in jail. Inmates who are serving a sentence may request a release into the weekend program when they have 20 days or less to serve.

Transportation

The Transportation Unit moves jail inmates to local courts, California Department of Corrections and Rehabilitation, Psychiatric Health Facility Unit, Tahoe jail, medical and dental treatment, the emergency room and outside agencies, and it extradites inmates from all over the country.

Our duty is to ensure the safe and secure movement of jail inmates while outside the Placerville facility. The Placerville Transportation Unit consists of 1 Sergeant, 2 Deputy Sheriffs, and 5 Correctional Officers. South Lake Tahoe has 5 alternate Transportation Officers who assist in transportation details as a collateral assignment to their correctional duties.

The safety and security of the inmates, officers and the public is the highest priority of the unit.

Work Program

(Totals include Placerville & Tahoe)

	2013	2014
Income	\$77,222	68,470
Non-Compliance	82	121
Compliances	288	252
Book and Release	225	207
Total Applications	354	465
New Starts	333	297

Transportation

West Slope		
	2013	2014
Total West Slope inmate transports	6038	6277
Inmates to West Slope Courts	4947	4960
Inmates picked up within the State of California	409	310
Out of State extraditions	10	23
Inmates to medical appointments	96	175
Inmates transferred between Tahoe and Placerville	431	643
Inmates to and from CDC	137	152
South Lake Tahoe		
Inmates to Tahoe Courts	1,547	2,179
Inmates to Medical Appointments	25	23
Court Remands	26	24

CUSTODY DIVISION

Custody Gang Unit

Both the Placerville and South Lake Tahoe jails have an active Gang Unit comprised of multiple Correctional Officers and a Correctional Sergeant.

The Custody Gang Unit is responsible for:

- » Interviewing and validating gang members in custody and then sharing that information with the agencies from that jurisdiction.
- » Making updates to Cal Gang, the data base that allows Law Enforcement in the state to keep track of intelligence on validated gang members and their associates.
- » Conducting gang training locally and across the U.S. for law enforcement and the public.
- » Sponsoring monthly meetings to share intelligence with Law Enforcement and the Schools and meeting with the EDGE Task Force which is comprised of the Gang Deputies from patrol, Placerville Police, Probation and the DA's Office to discuss gang issues in the community.

The implementation of Assembly Bill "AB109" criminal justice realignment Act of 2011 in October 2011 continues to change the type of gang member that comes into custody. Many of the identified gang members are much more sophisticated and new to the area, belonging to gangs we rarely saw prior to the AB109 change.

Deputies and Correctional Officers continue to face a trend within the gang culture that makes their job more dangerous than in prior years.

CUSTODY DIVISION

Court Security / Bailiffs

The mission of the Court Security Unit is to provide a safe and accessible court for all court staff, those with business at the court and visitors.

The Sheriff's Office provides security for court operations within El Dorado County. There are 9 full time courtrooms in five different locations throughout the county, South Lake Tahoe, Placerville and Cameron Park. Deputy Sheriffs work as Bailiffs providing security to the Judges and the court. Sheriff Security Officers staff the screening checkpoints and screen all visitors entering the court building. Sheriff Security Officers routinely provide perimeter checks of the court facilities. Sheriff Security Officers search each courtroom before opening to assure no contraband was left behind.

During 2014 court security was challenged with several cases and construction projects. The South Lake Tahoe courts spent several months dealing with a death penalty case. Death penalty cases are cumbersome due to the jury selection process and the number of people who are summonsed to court to fill a jury. Death penalty cases involve lengthy legal hearings and potential members of a jury are constantly being sequestered to avoid jury contamination or tampering. Both South Lake Tahoe and Cameron Park Court houses underwent construction projects to improve access and security. In addition to all of the changes above, the voters passed Proposition 47 which necessitated many cases to come before the court for compliance.

Court Security

One full time Sheriff's Sergeant

West Slope

Main Street Courthouse

Dept. 1 One full time Deputy Sheriff

Dept. 2 One full time Deputy Sheriff

Dept. 5 One full time Deputy Sheriff

Dept. 6 Overflow/Extra help deputy

Metal Detector staffed with two full time Security Officers

Building C Courthouse

Dept. 7 One full time Deputy Sheriff

Metal Detector staffed with two full time Security Officers

Juvenile Hall Courthouse

Dept. 8 One full time Deputy Sheriff

Metal Detector is staffed with one full time Security Officer and one rotating Security Officer

Cameron Park Courthouse

Dept. 9 One full time Deputy Sheriff

Dept. 10 Overflow / extra-help deputy

Metal Detector is staffed with one full time Security Officers= and one rotating Security Officer

South Lake Tahoe

Dept. 3 One full time Deputy Sheriff

Dept. 4 One full time Deputy Sheriff

Dept. 12 One full time Deputy Sheriff

Dept. 11 One half time deputy rover/relief bailiff

Metal Detector Two full time Security Officers

SPECIAL PROGRAMS



- ♦ Sheriff's Team of Active Retirees (STARs)
- ♦ Citizen's Academy
- ♦ Explorers
- ♦ El Dorado Multidisciplinary Team
- ♦ Autism Registration
- ♦ Lake Tahoe Secret Witness Program
- ♦ Air Squadron
- ♦ Sheriff's Posse
- ♦ Thrive with 10-35
- ♦ Chaplaincy Program



SPECIAL PROGRAMS

STARs

Celebrating 20 Years

History

In May 1992 a committee of community volunteers with continuous guidance and support from the Sheriff, developed a complete program that has become the El Dorado County Sheriff's Team of Active Retirees (S.T.A.R.). When finalized, the proposal was approved by the Sheriff and presented to the County Board of Supervisors for their approval and support in obtaining funding, insurance and other necessities to begin the program. Approval was granted, and on January 10, 1994 after nineteen months of effort, the first S.T.A.R. Academy began. Twenty-five volunteers graduated three weeks later. Now 20 years later, the program includes 114 volunteers both in Placerville and South Lake Tahoe. This group of volunteers come from all walks of life, and bring their own unique experiences and skill sets to the organization.

The STAR Program is composed of senior citizens who are familiar with El Dorado County. These trained volunteers are used to enhance vital crime prevention services and community awareness. STAR vehicle units conduct high visibility patrols, assist the crime prevention unit, conduct business/home security checks, provide traffic control for accidents and special events, and assist the Sheriff's Office with administrative duties. STARs function as eyes and ears of the Department and any suspicious activity observed is immediately reported

to the Sheriff's Office.

The STAR Program is a Crime Prevention Program exercising proactive law enforcement principles. All volunteer members have an interest in helping the El Dorado County Sheriff's Office and their community.

All members must attend a two week STAR Training Academy as well as the Citizen's Academy. At the STAR Training Academy volunteers gain knowledge of patrol procedures, radio communications, traffic control, graffiti abatement, vacation checks and Sheriff's Office policy and procedures.

The volunteer approach is termed passive law enforcement and is being successfully used in many cities and counties in the state. Tasks performed by STARs allow Sheriff Office Employees to dedicate more time in serving the public. As volunteer workers, they have an obligation to the public we serve to maintain the highest ethical standards in both personal and official conduct.



SOME HIGHLIGHTS

STARs performed **25,200** Volunteer hours

They worked **72** specialized community events.

Duties: Patrol, County Mail, Radar Trailer, Vacation Checks, Alarms, Booking, Tahoe Runs, Special Events, Assisting Detectives, You Are Not Alone (YANA) Program, EDH Substation, Front Desk, Fleet, Citizen's Academy, STAR Academy, Neighborhood Watch Programs, Com Van (Mobile Command Post Vehicle and Trailer) deployments, Mall Patrol (at Christmas), Graffiti Abatement Program, Records and many others.

SPECIAL PROGRAMS

Citizen's Academy

The El Dorado County Sheriff's Office offers the Citizens Law Enforcement Academy semi-annually. This Academy familiarizes El Dorado County residents with many aspects of law enforcement and the role the Sheriff's Office plays in the community.

The Sheriff's Office has instituted the concepts of Community Oriented Policing and Problem Solving (COPPS). The goal of the COPPS program is to open a positive line of communication with our citizens and to involve the community in some of the decisions regarding law enforcement.

By attending the Academy, citizens will develop a better understanding of the guidelines under which an officer functions and why officers handle situations the way they do. Also discussed is the role of law enforcement and how members of the community can come together to address serious crime and social issues.

Citizens Academy

- » Is 16 weeks long, one night a week.
- » 2 Academies were hosted in 2014.
- » Approximately 56 people attended.
- » Over 30 staff members provide the training.

Explorer Post #457

- ♦ Explorer Post #457 has over 15 explorers
- ♦ 4 Advisors that are Sheriff's Office Staff
- ♦ They received 129 hours of training
- ♦ They worked 29 community events totaling 752 hours in 2014.



Explorers

The El Dorado County Sheriff's Office offers Law Enforcement Explorer Post #457 to youth in the community. The program is part of Learning for Life's career education program for young men and women who are 15 (can be 14 if you have completed the eighth grade) through 20 years old.

The purpose of the Explorer Program is to provide experiences that help young people mature and to prepare them to become responsible and caring adults. Explorers are ready to investigate the meaning of interdependence in their personal relationships and communities.

Exploring is based on a unique and dynamic relationship between youth and the organizations in their communities. Local community organizations initiate a specific Explorer post by matching their people and program resources to the interests of young people in the community.

The result of the Sheriff's Office program of activities is to help youths pursue, grow and develop their special interest in law enforcement.

SPECIAL PROGRAMS

El Dorado Multidisciplinary Team

The Multi Disciplinary Team (MDT) is a cooperative effort of local law enforcement and mental health professionals with the goal of providing a mechanism for early intervention on behalf of individuals suffering from mental disease. The team provides a platform for better and more open dialogue among those who interact with the mentally unstable. The team's goal is to identify individuals who are exhibiting behaviors that may result in future law enforcement contacts and attempt to get them the help they need.

The MDT continues to succeed. The team meets on a monthly basis and handles about 12 cases each month. The team has proven effective in a number of cases that were resolved prior to crisis and resulted in lower calls for service and increased public safety.

Autism Registration

The El Dorado County Sheriff's Office in conjunction with other County and State agencies has provided the autism registration form to members of El Dorado County living with a child or adult with autism.

The information provided will be utilized to identify the residence and the individual with autism. This information will be entered into the El Dorado County Sheriff's Office dispatch computer system. This allows County dispatchers to access the provided information in the event we receive a call for service from the identified residence.

The El Dorado County Sheriff's Office is committed to serving our communities with the highest level of service, compassion and understanding. Providing this information for our deputies will allow them to understand the situation thoroughly and provide the highest level of service during a time of need.

The El Dorado County Sheriff's Office understands HIPAA regulations and the right to medical privacy. The information provided is entered into the computer system and the form deleted. The information will be accessed under a right to know and need to know basis.

The information is intended to serve the autistic commu-

nity and their families in a positive manner, not in a manner to highlight their condition.

The El Dorado County Sheriff's Office encourages anyone with a member in their household to register and update the information on an annual basis. This will allow the El Dorado County Sheriff's Office the ability to maintain current records and continued service. Pursuant to HIPAA regulations 164.512(f) and 164.512(j).

Lake Tahoe Secret Witness Program

Program History

In 1980 the Secret Witness Program was formed as a result of the death of teenager Richard E. Swanson. Richard was killed during a robbery of a South Lake Tahoe gas station. Businesses and citizens raised nearly \$10,000 as reward for information leading to an arrest of Richard's killer. This tragedy created the base for what has become a very successful law enforcement tool in South Lake Tahoe and surrounding communities.

Purpose:

Because Sheriff's Deputies are often unable to know everything that is going on in the community, citizen participation in law enforcement and crime prevention is crucial. The Secret Witness Program is designed to provide incentives to community members for becoming involved in crime prevention and resolution. Citizens are offered opportunities to make the community a safer place to live by becoming involved in crime prevention. Besides making a positive contribution to the community, individuals can enjoy some monetary reward for their efforts thanks to the Secret Witness Program.

How the Program Works:

The Secret Witness Program relies on the anonymous tips of community members. Any individual can make an anonymous phone call to a 24-hour, 7-days a week hotline and provide the information. To become a secret witness please call the Secret Witness Hotline at: (530) 541-6800.

SPECIAL PROGRAMS

Lake Tahoe Secret Witness Program

Contiued

The information is then sent to the law enforcement agency responsible for acting on the tip. The agency checks up on the tip, and if the tip leads to an arrest of a criminal then the individual who offered the tip is contacted and offered a reward. The rewards vary depending on the value of the information. The more valuable the information, the bigger the reward.

Reward money is drawn from a pot that is funded by donations from local businesses and individuals.



Air Squadron

The purpose of the Air Squadron is to provide the Sheriff's Office with an organized, professional and experienced volunteer group of pilots and aircraft to aid in search, rescue and recovery operations. In addition to the search and rescue function the Air Squadron assists with transportation of Sheriff's Office personnel for official business, aerial observations and reconnaissance and aerial photography for evidence documentation.

Additionally, full-time employed members of this Office may, with the approval of the Sheriff, and on a voluntary basis, be part of the Air Squadron.

The Air Squadron consists of 25 members, and has at its disposal 17 aircraft, including two helicopters. The Squadron flew 11 missions in 2014, which were flown by 5 different pilots. There are three primary purposes for the missions. They are to provide an orientation to

new and existing employees; to support the surveillance needs of the department; and to provide transportation for Sheriff's Office personnel when needed.

Sheriff's Posse

The Sheriff's Posse of El Dorado County is a 501.(c)3 charitable organization and is composed of a group of citizens in El Dorado County organized to raise funds to support Sheriff's Deputies and their families in times of need. Sheriff's Posse members are not peace officers and are not sworn members of the Sheriff's Office.

The Sheriff's Posse sponsors an annual barbeque for all personnel of the Sheriff's Office, their family members, and Posse members.

Mission Statement

The members of the El Dorado County Sheriff's Posse, in assembly, do hereby recognize their mission to support members and their families of the El Dorado County Sheriff's Office both enthusiastically, financially, and in any other capacity deemed appropriate in time of need. One of the basic goals is to provide immediate financial assistance to a spouse in the event an officer is killed in the line of duty.

The Posse is comprised of approximately 137 members.

SPECIAL PROGRAMS

Thrive with 10-35

Thrive with 10-35 was established at the El Dorado County Sheriff's Office in 2011. The mission of the organization is to promote the well-being of all Sheriff Office members and their families. They provide information, support and practical assistance to help law enforcement families successfully survive and thrive during the Sheriff's Office employee's law enforcement career and beyond. Their hope is to better equip employees and their families to manage the challenges of law enforcement, that spouses and partners will feel more secure and connected to their loved ones, and law enforcement marriages and relationships will be more stable.

The group is broken down into six committees; Executive, Assimilation, Connection and Assistance, Encouragement, Events, Education and Critical Incident.

The **Executive** committee oversees all Thrive activities, assesses situations and needs that arise, and mobilizes the appropriate Thrive committees.

The **Assimilation, Connection and Assistance** committee welcomes and assists new Deputies/employee's family for the first year on the job, provides mentoring, support groups, and hands-on assistance such as rides, delivering meals, and child care as needed in difficult times

The **Encouragement** committee sends cards to employees and their families and remembers special occasions

The **Events** committee plans, coordinates, and publicizes events sponsored by Thrive during the year. Examples of this would be the Cioppino feed and Breakfast with Santa.

The **Education** committee bring speakers and training to the Thrive family.

The **Critical Incident** committee develops, trains, and implements a protocol for informing and assisting families when critical incidents occur that involve employees at the Sheriff's office.

Thrive with 10-35 is a nonprofit, and requires no funding from the Sheriff's Office. They complete their tasks with volunteer work, donations and fundraisers.



Chaplaincy Program

The Sierra Law Enforcement Chaplaincy (SLEC) works to help law enforcement officers and staff, victims of crime and the citizens of El Dorado County. Service is provided 24/7 by SLEC and its volunteer staff.

Our primary mission is to respond to crises and we do this 24 hours a day, seven days a week. We respond to calls for assistance with suicide prevention, death notifications and counseling.

SLEC staff participate in ride-a-longs on a regular basis to maintain positive relationships with deputies and detectives. In addition, SLEC staff works with dispatchers and non-sworn staff. We also provide training to law enforcement staff on a wide variety of topics related to law enforcement.

SHERIFF'S OFFICE AT WORK



Main Office

300 Fair Lane
Placerville, CA 95667
(530) 621-5655

South Lake Tahoe

1360 Johnson Blvd.
#100
South Lake Tahoe,
CA 96150
(530) 573-3000

Investigations

471 Pierroz Rd.
Placerville, CA 95667
(530) 642-4703

Placerville Jail

300 Forni Rd.
Placerville, CA 95667
(530) 621-6000

South Lake Tahoe Jail

1051 Al Tahoe Blvd.
South Lake Tahoe,
CA 96150
(530) 573-3031

El Dorado Hills Sub Station

4354 Town Center
Dr., Suite #112
El Dorado Hills, CA
95762

Georgetown Sub Station

6101 FRONT ST. #4
GEORGETOWN, CA
95634

WWW.EDSO.ORG

Special Thanks to Tami Bears of, Artistic Photography by Tami, for the Cover Photo.